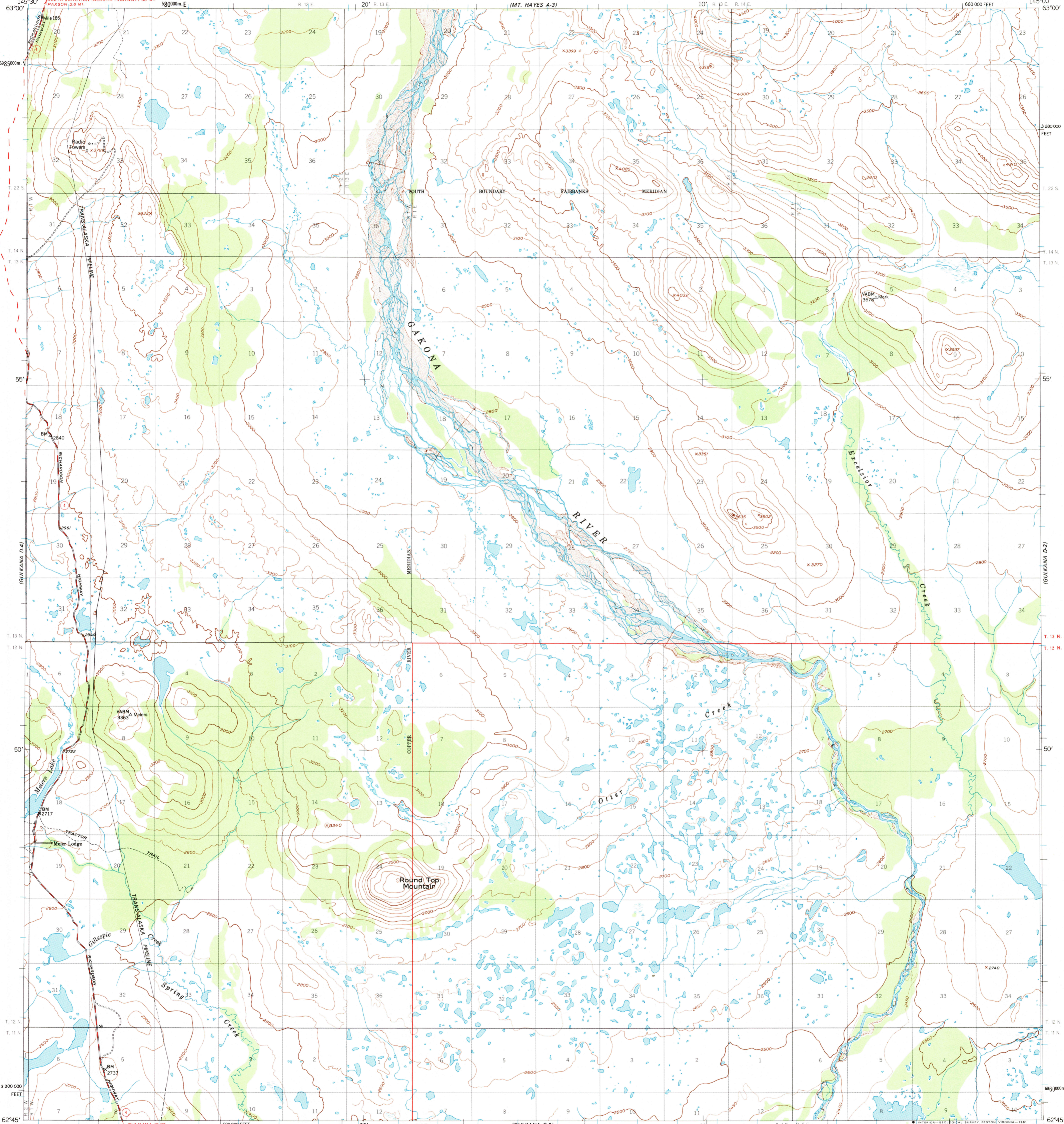
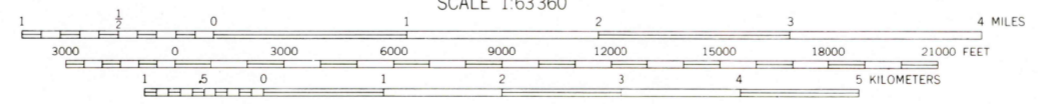
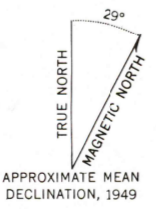


UNITED STATES  
DEPARTMENT OF THE INTERIOR  
GEOLOGICAL SURVEY

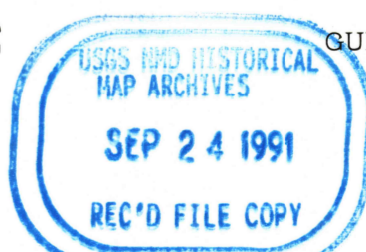
GULKANA (D-3) QUADRANGLE  
ALASKA  
1:63 360 SERIES (TOPOGRAPHIC)



Mapped, edited, and published by the Geological Survey  
Control by USGS and NOS/NOAA  
Topography by photogrammetric methods from aerial photographs  
taken 1949 and 1954, field annotated 1949. Map not field checked  
Projection and 1000-meter grid ticks shown in blue:  
Universal Transverse Mercator, zone 6  
10,000-foot grid ticks based on Alaska coordinate  
system, zone 3. 1927 North American Datum  
The difference between 1927 North American Datum and North  
American Datum of 1983 (NAD 83) for 7.5 minute intersections  
is given in USGS Bulletin 1875  
Gray land lines represent unsurveyed and unmarked locations  
determined by the Bureau of Land Management  
Folios F-9, Fairbanks Meridian, CR-3 and CR-4 Copper River Meridian  
Swamps, as portrayed, indicate only the wetter areas,  
usually of low relief, as interpreted from aerial photographs



CONTOUR INTERVAL 100 FEET  
DOTTED LINES REPRESENT 50 FOOT CONTOURS  
NATIONAL GEODETIC VERTICAL DATUM OF 1929  
FOR SALE BY U. S. GEOLOGICAL SURVEY  
FAIRBANKS, ALASKA 99701, DENVER, COLORADO 80225 OR RESTON, VIRGINIA 22092  
A FOLDER DESCRIBING TOPOGRAPHIC MAPS AND SYMBOLS IS AVAILABLE ON REQUEST



ROAD CLASSIFICATION  
Medium-duty ——— Light-duty ———  
Unimproved dirt - - - - -  
State Route ○

GULKANA (D-3), ALASKA  
62145-G1-TF-063  
1949  
MINOR REVISION 1991