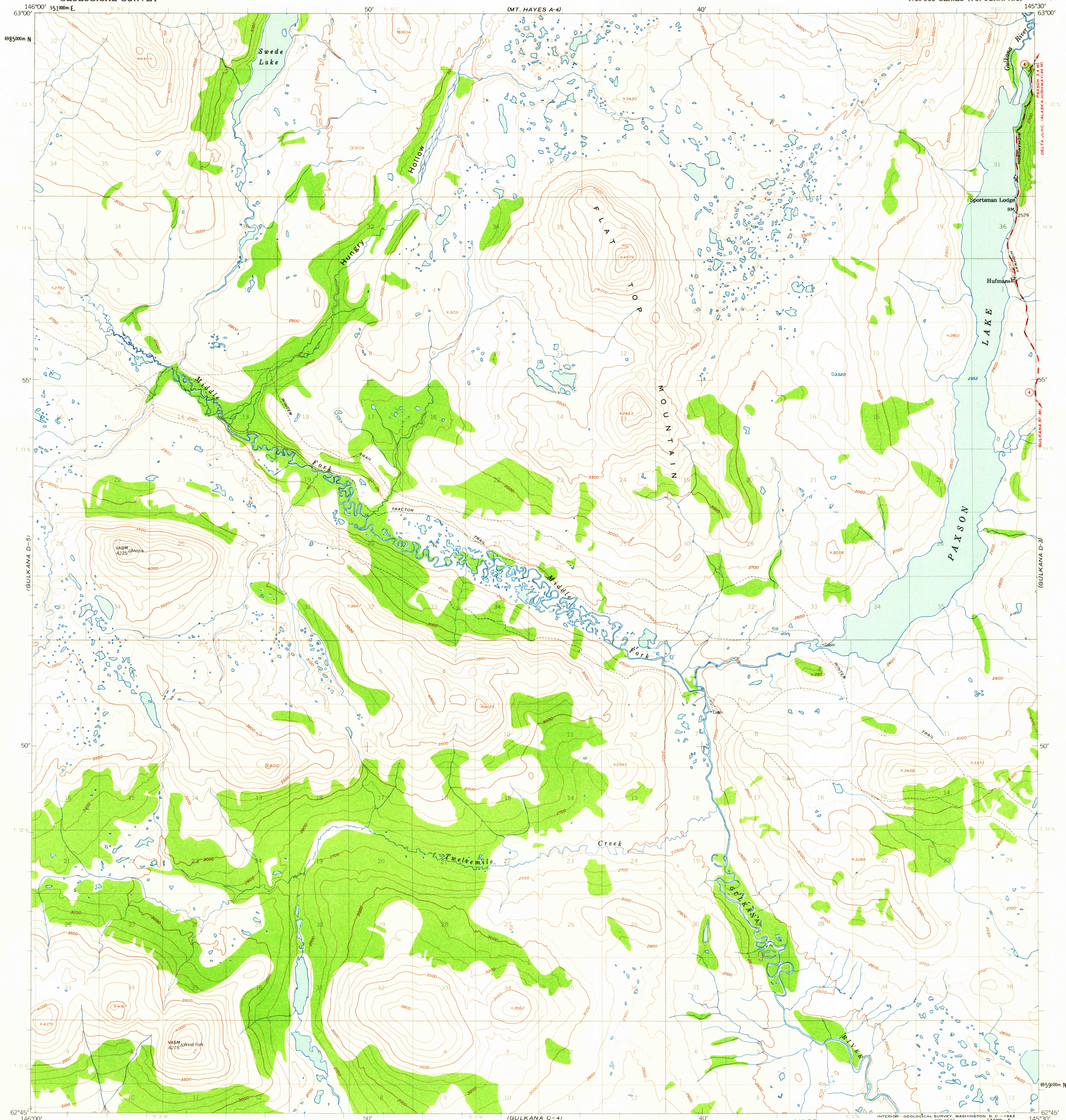
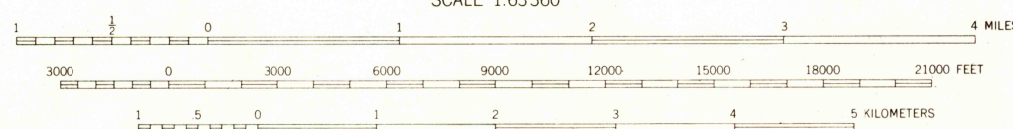
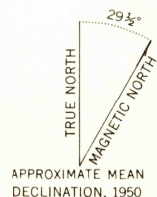


UNITED STATES  
DEPARTMENT OF THE INTERIOR  
GEOLOGICAL SURVEY

GULKANA (D-4) QUADRANGLE  
ALASKA  
1:63 360 SERIES (TOPOGRAPHIC)



Mapped, edited, and published by the Geological Survey  
Control by USGS and USC&GS  
Topography from aerial photographs by photogrammetric methods  
1951. Aerial photographs taken 1949, field annotated 1950  
Map not field checked  
Universal Transverse Mercator projection, 1927 North American datum  
1000-meter Universal Transverse Mercator grid ticks, zone 6,  
shown in blue  
Land lines represent unsurveyed and unmarked locations  
predetermined by the Bureau of Land Management. Folios F-9 and  
CR-4, Fairbanks and Copper River Meridians  
Swamps, as portrayed, indicate only the wetter areas,  
usually of low relief, as interpreted from aerial photographs



CONTOUR INTERVAL 100 FEET  
DOTTED LINES REPRESENT 50 FOOT CONTOURS  
DATUM IS MEAN SEA LEVEL

FOR SALE BY U.S. GEOLOGICAL SURVEY  
FAIRBANKS, ALASKA DENVER 25, COLORADO WASHINGTON 25, D.C.  
A FOLDER DESCRIBING TOPOGRAPHIC MAPS AND SYMBOLS IS AVAILABLE ON REQUEST

USGS  
Historical File  
Topographic Division



ROAD CLASSIFICATION  
Medium-duty ——— Unimproved dirt ———  
State Route ———

GULKANA (D-4), ALASKA  
N6245-W14530/15X30  
1950  
MINOR REVISIONS 1960

JUN 15 1962  
3470