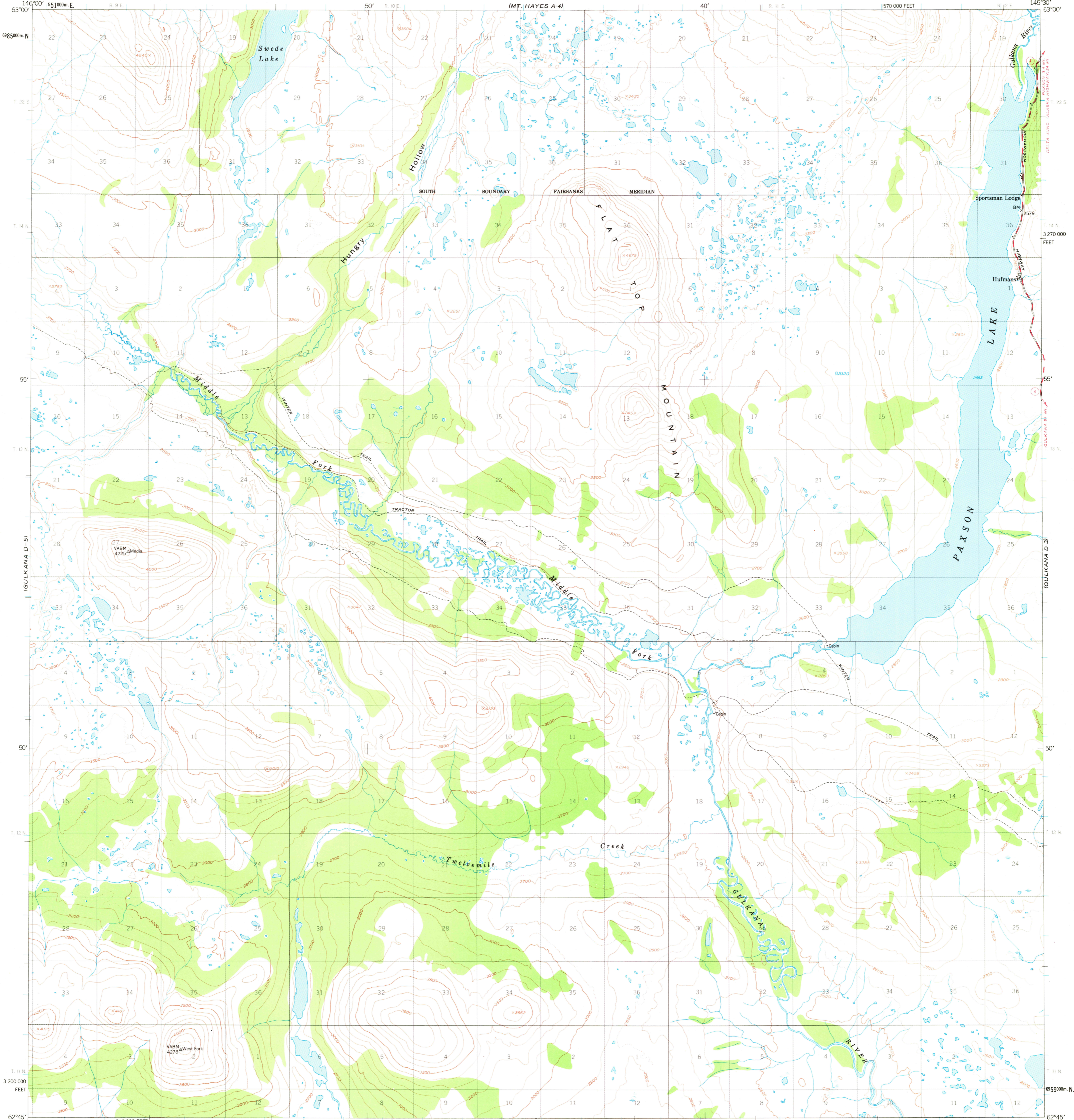
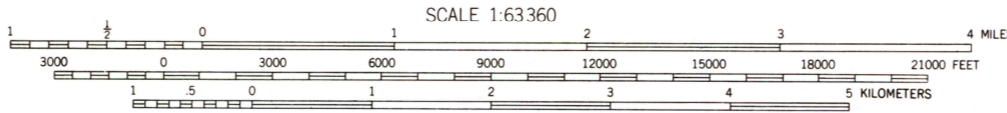
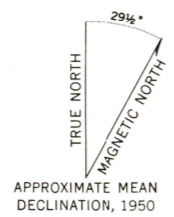


UNITED STATES
DEPARTMENT OF THE INTERIOR
GEOLOGICAL SURVEY

GULKANA (D-4) QUADRANGLE
ALASKA
1:63 360 SERIES (TOPOGRAPHIC)



Mapped, edited, and published by the Geological Survey
Control by USGS and USC&GS
Topography by photogrammetric methods from aerial photographs
taken 1949, field annotated 1950. Map not field checked
Universal Transverse Mercator projection, 1927 North American datum
10,000-foot grid ticks based on Alaska coordinate system, zone 3
1000-meter Universal Transverse Mercator grid ticks,
zone 6, shown in blue
Land lines represent unsurveyed and unmarked locations
predetermined by the Bureau of Land Management
Folios F-9, Fairbanks Meridian and CR-4, Copper River Meridian
Swamps, as portrayed, indicate only the wetter areas,
usually of low relief, as interpreted from aerial photographs



CONTOUR INTERVAL 100 FEET
DOTTED LINES REPRESENT 50 FOOT CONTOURS
NATIONAL GEODETIC VERTICAL DATUM OF 1929

ROAD CLASSIFICATION
Medium-duty ———— Unimproved dirt - - - - -
State Route ○



FOR SALE BY U. S. GEOLOGICAL SURVEY
FAIRBANKS, ALASKA 99701, DENVER, COLORADO 80225, OR RESTON, VIRGINIA 22092
A FOLDER DESCRIBING TOPOGRAPHIC MAPS AND SYMBOLS IS AVAILABLE ON REQUEST

USGS
Historical File
Topographic Division

GULKANA (D-4), ALASKA
N6245-W14530/15X30
1950
MINOR REVISIONS 1976

3300

JAN 06 1978