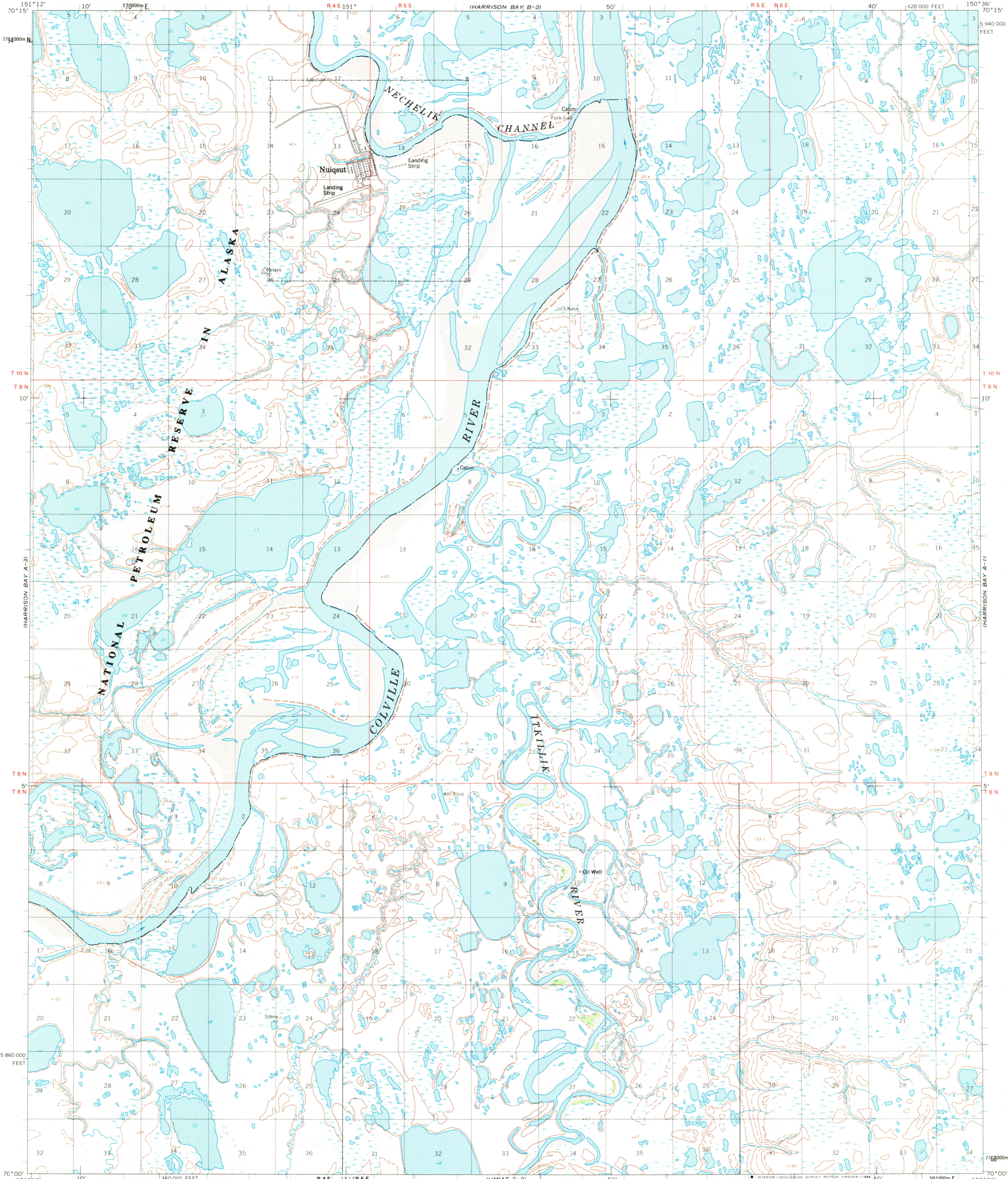


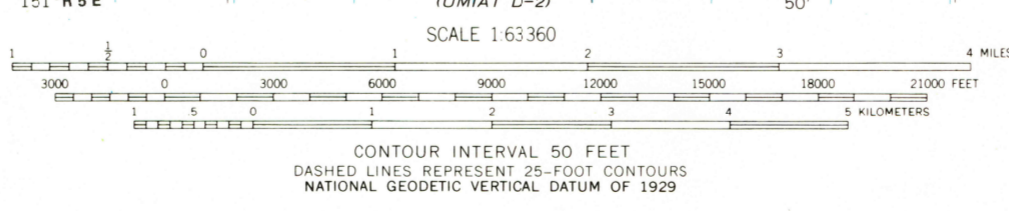
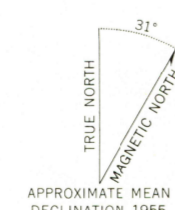
UNITED STATES
DEPARTMENT OF THE INTERIOR
GEOLOGICAL SURVEY

HARRISON BAY (A-2) QUADRANGLE
ALASKA-NORTH SLOPE BOROUGH
1:63 360 SERIES (TOPOGRAPHIC)



UMIAT D-31

Maped by the Defense Mapping Agency
Edited and published by the Geological Survey
Control by NOS/NOAA and USCE
Topography by photogrammetric methods from aerial photographs taken 1955, field annotated 1955. Map not field checked
Projection and 1000-meter grid ticks shown in blue:
Universal Transverse Mercator, zone 5
10,000-foot grid ticks based on Alaska coordinate system, zone 4, 1927 North American Datum
To place on the predicted North American Datum 1983 move the projection lines 39 meters north and 120 meters east
Gray land lines represent unsurveyed and unmarked locations predetermined by the Bureau of Land Management
Folio U-3, Umiat Meridian
Swamps, as portrayed, indicate only the wetter areas, usually of low relief, as interpreted from aerial photographs
There may be private inholdings within the boundaries of the National or State reservations shown on this map



ROAD CLASSIFICATION
Light-duty

HARRISON BAY (A-2), ALASKA
N7000-W15036/15 X 36
1955
MINOR REVISION 1984

FOR SALE BY U. S. GEOLOGICAL SURVEY
FAIRBANKS, ALASKA 99701, DENVER, COLORADO 80225, OR RESTON, VIRGINIA 22092
A FOLDER DESCRIBING TOPOGRAPHIC MAPS AND SYMBOLS IS AVAILABLE ON REQUEST

RETURN TO:
NHD HISTORICAL MAP ARCHIVES
USGS NATIONAL CENTER, MS-522
RESTON, VA 22092