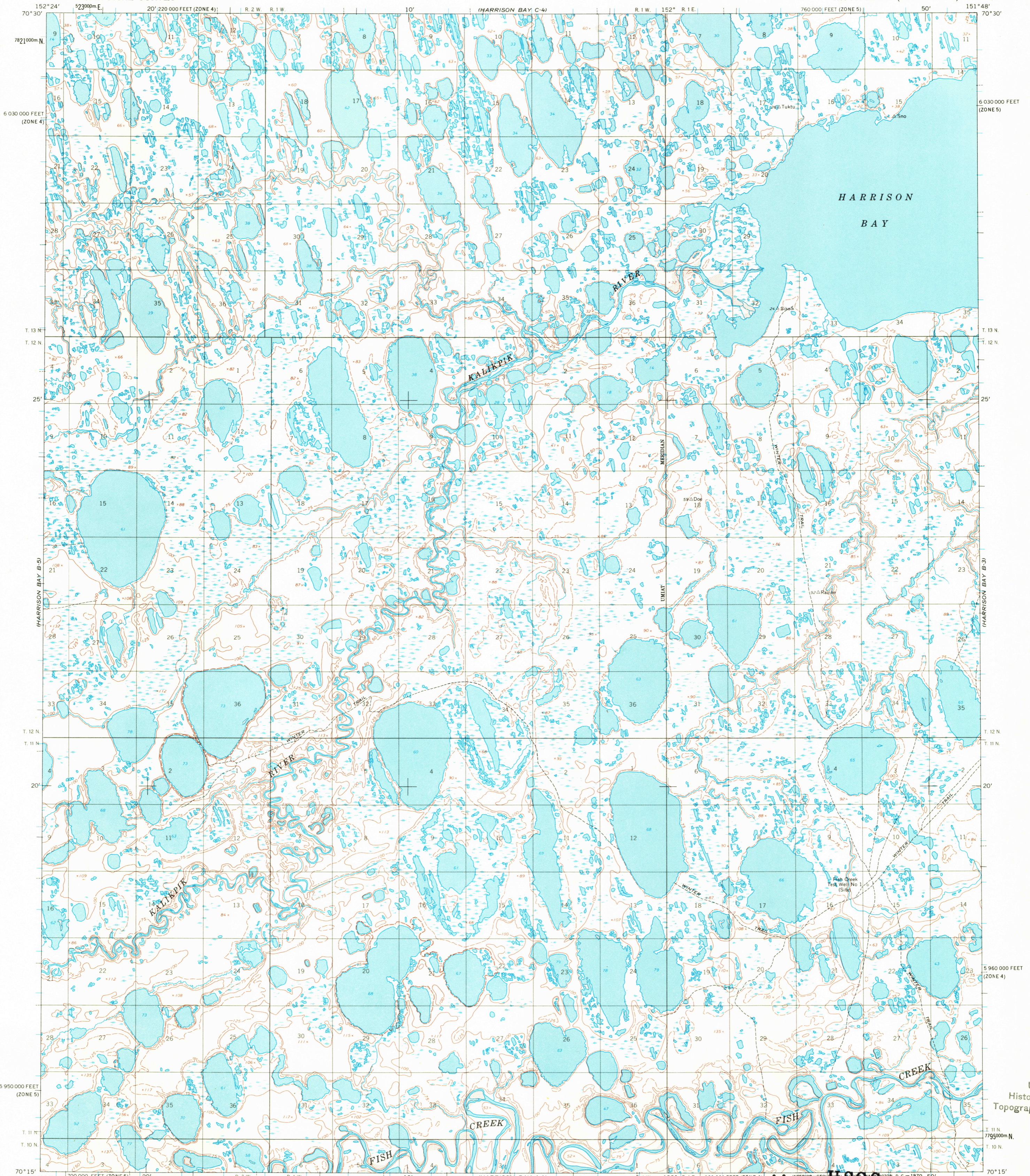


UNITED STATES  
DEPARTMENT OF THE INTERIOR  
GEOLOGICAL SURVEY

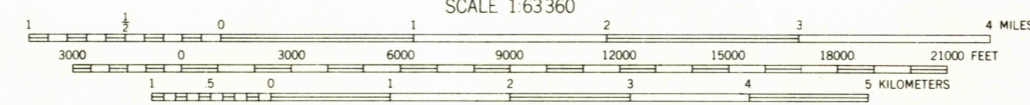
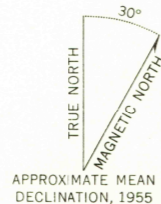
HARRISON BAY (B-4) QUADRANGLE  
ALASKA  
1:63 360 SERIES (TOPOGRAPHIC)



Mapped by the Army Map Service  
Edited and published by the Geological Survey  
Control by USGS and USCE

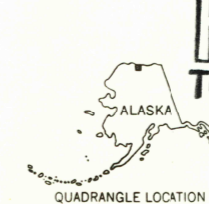
Topography by photogrammetric methods from aerial photographs  
taken 1955, field annotated 1955. Map not field checked  
Universal Transverse Mercator projection. 1927 North American datum  
10,000-foot grid based on Alaska coordinate system, zones 5 and 4  
1000-meter Universal Transverse Mercator grid ticks,  
zone 5, shown in blue

Land lines represent unsurveyed and unmarked locations  
determined by the Bureau of Land Management  
Folios U-3 and U-4. Umat Meridian  
Entire area lies within Naval Petroleum Reserve No. 4



SCALE 1:63360  
CONTOUR INTERVAL 50 FEET  
DASHED LINES REPRESENT 25-FOOT CONTOURS  
DATUM IS MEAN SEA LEVEL  
SHORELINE SHOWN REPRESENTS THE APPROXIMATE LINE OF MEAN HIGH WATER  
THE MEAN RANGE OF TIDE IS APPROXIMATELY 0.5 FEET

FOR SALE BY U. S. GEOLOGICAL SURVEY  
FAIRBANKS, ALASKA 99701, DENVER, COLORADO 80225, OR WASHINGTON, D. C. 20242  
A FOLDER DESCRIBING TOPOGRAPHIC MAPS AND SYMBOLS IS AVAILABLE ON REQUEST



U.S.G.S.  
FILE COPY  
TOPOGRAPHIC DIVISION

HARRISON BAY (B-4), ALASKA  
N7015-W15148/15X36  
1955

USGS  
Historical File  
Topographic Division

2830

OCT 28 1969