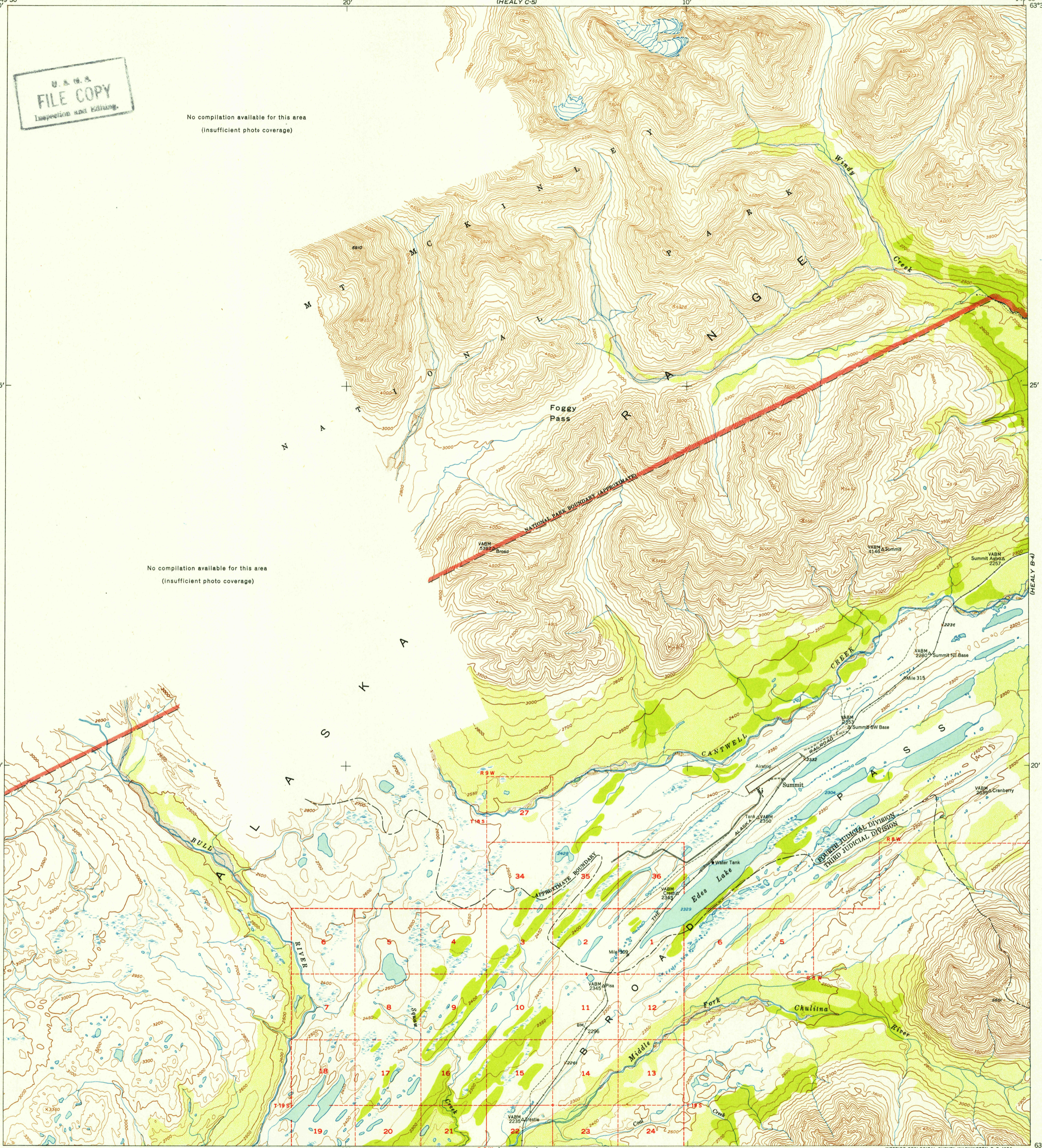


149°30' 63°30' 20' (HEALY C-5) 10' 149°00' 63°30'

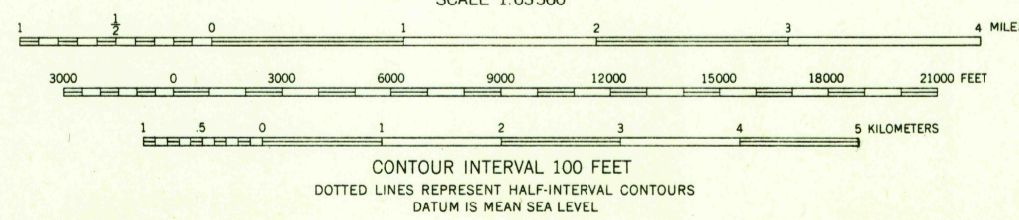
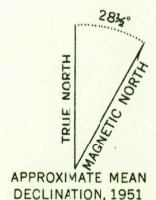
U.S.G.S.
FILE COPY
Inspection and Editing.

No compilation available for this area
(insufficient photo coverage)

No compilation available for this area
(insufficient photo coverage)



Mapped, edited, and published by the Geological Survey
Control by USGS and USC&GS
Topography from aerial photographs by multiplex methods
Aerial photographs taken August 1949
Universal Transverse Mercator projection, zone 6
1927 North American datum
Dashed land lines indicate approximate location
Unchecked elevations shown in brown and blue



ROAD CLASSIFICATION

ALL WEATHER ROADS	DRY WEATHER ROADS
Hard-surface.....None	Improved dirt.....
Other.....None	Unimproved dirt.....
	Trails.....

U.S.G.S.
FILE COPY
Inspection and Editing.

USGS
Historical File
Topographic Division
HEALY (B-5), ALASKA
N6315-W14900/15X30
1951

FOR SALE BY U.S. GEOLOGICAL SURVEY, FEDERAL CENTER, DENVER, COLORADO OR WASHINGTON 25, D.C.
A FOLDER DESCRIBING TOPOGRAPHIC MAPS AND SYMBOLS IS AVAILABLE ON REQUEST