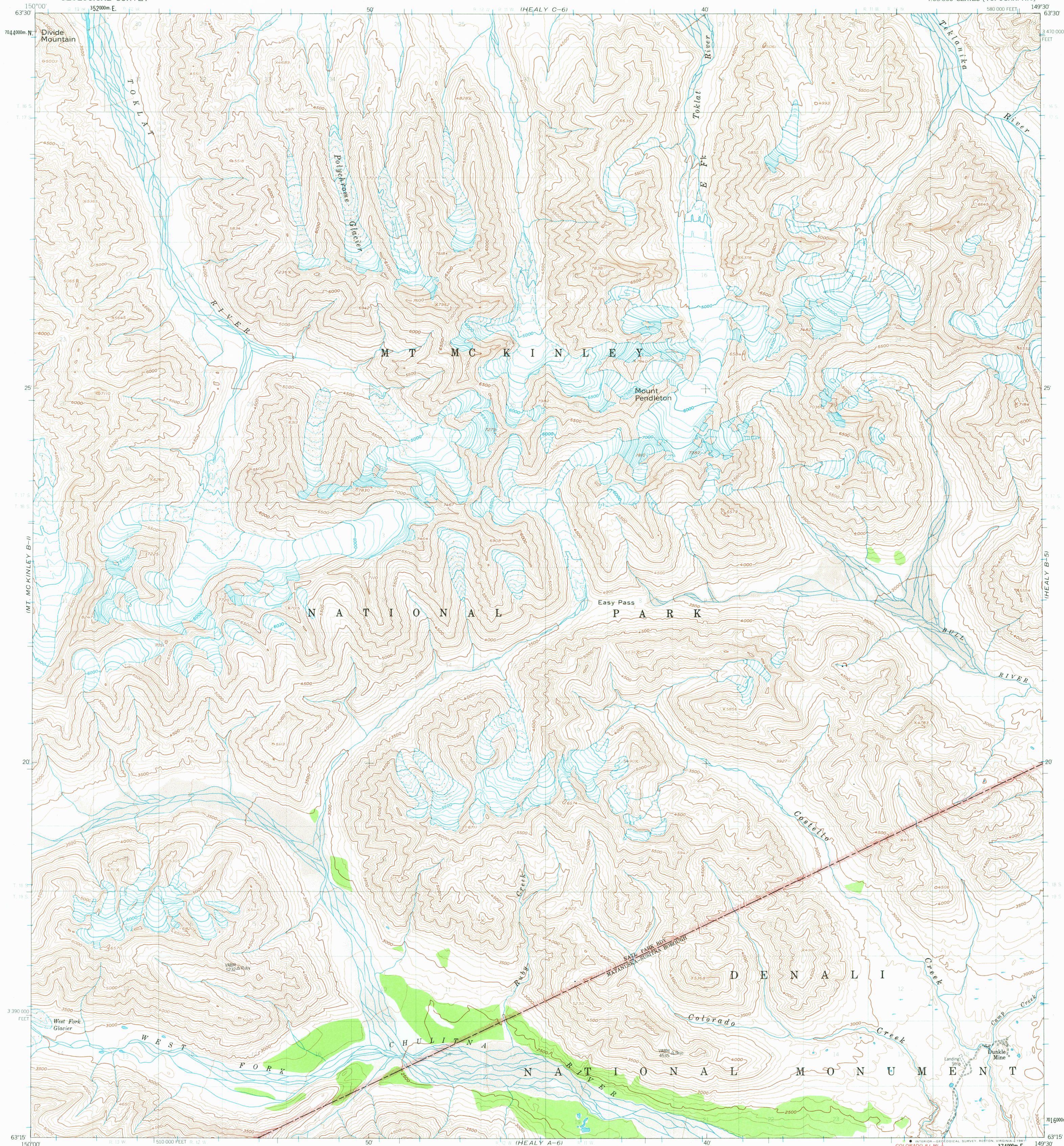


UNITED STATES
DEPARTMENT OF THE INTERIOR
GEOLOGICAL SURVEY

HEALY (B-6) QUADRANGLE
ALASKA
1:63 360 SERIES (TOPOGRAPHIC)



Mapped, edited, and published by the Geological Survey

Control by USGS and USC&GS

Topography by photogrammetric methods from aerial photographs

taken 1953, field annotated 1954. Map not field checked

Universal Transverse Mercator projection, 1927 North American datum

10,000 foot grid based on Alaska coordinate system, zone 4

1000 meter Universal Transverse Mercator grid ticks,

zone 6, shown in blue

Land lines represent unsurveyed and unmarked locations

predetermined by the Bureau of Land Management

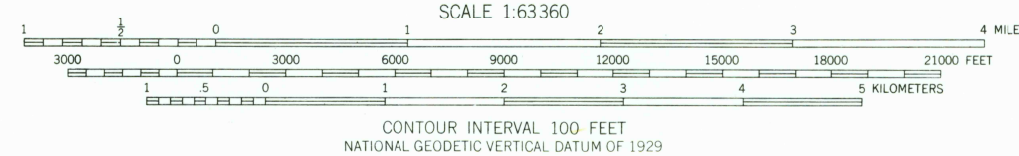
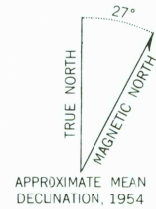
Folio F-10, Fairbanks Meridian

Swamps, as portrayed, indicate only the wetter areas,

usually of low relief, as interpreted from aerial photographs

There may be private inholdings within the boundaries of

the National or State reservations shown on this map



CONTOUR INTERVAL 100 FEET
NATIONAL GEODETIC VERTICAL DATUM OF 1929

FOR SALE BY U.S. GEOLOGICAL SURVEY
FAIRBANKS, ALASKA 99701, DENVER, COLORADO 80225, OR RESTON, VIRGINIA 22092
A FOLDER DESCRIBING TOPOGRAPHIC MAPS AND SYMBOLS IS AVAILABLE ON REQUEST



ROAD CLASSIFICATION

Unimproved dirt -----

HEALY (B-6), ALASKA
N6315-W14930/15X30

1954
MINOR REVISIONS 1981

USGS
Historical File
Topographic Division

FEB 3 1981

5200