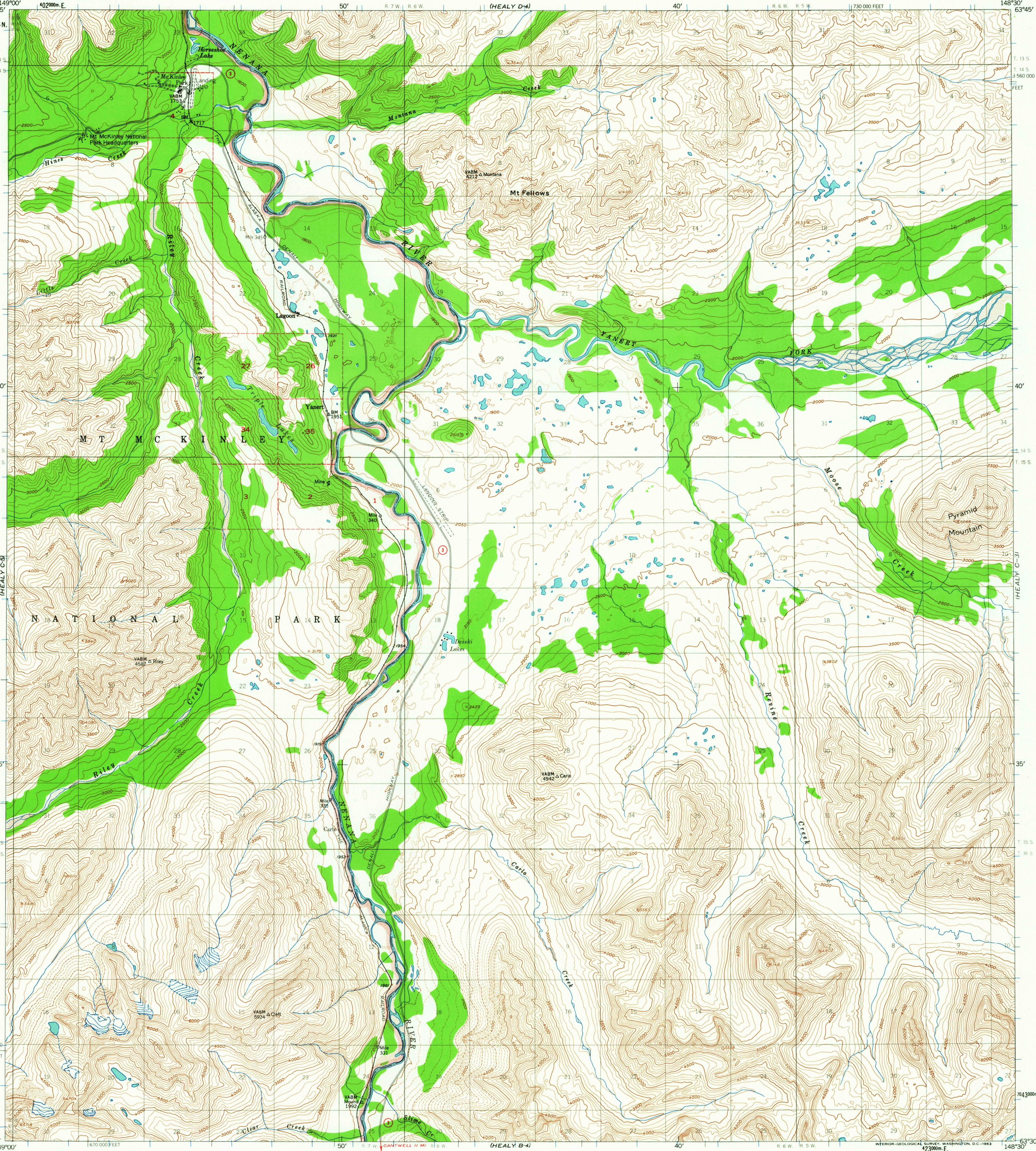
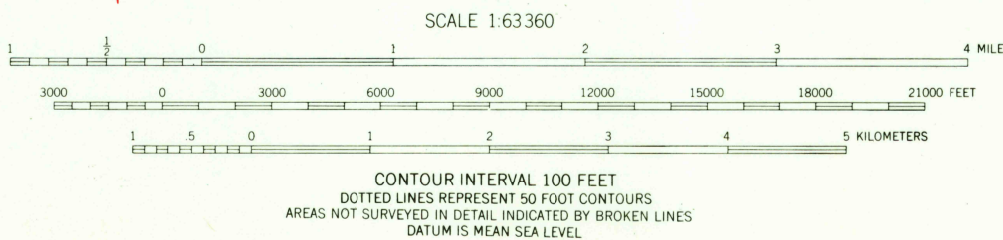
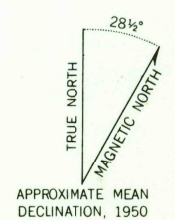


UNITED STATES  
DEPARTMENT OF THE INTERIOR  
GEOLOGICAL SURVEY

HEALY (C-4) QUADRANGLE  
ALASKA  
1:63 360 SERIES (TOPOGRAPHIC)



Maped, edited, and published by the Geological Survey  
Control by USGS and USC&GS  
Topography by photogrammetric methods from aerial photographs  
taken 1949, field annotated 1950. Map not field checked  
Universal Transverse Mercator projection, 1927 North American Datum  
10,000-foot grid based on Alaska coordinate system, zone 4  
1000-meter Universal Transverse Mercator grid ticks,  
zone 6, shown in blue  
Land lines represent unsurveyed and unmarked locations  
predetermined by the Bureau of Land Management  
Folio F-10, Fairbanks Meridian



CONTOUR INTERVAL 100 FEET  
DOTTED LINES REPRESENT 50 FOOT CONTOURS  
AREAS NOT SURVEYED IN DETAIL INDICATED BY BROKEN LINES  
DATUM IS MEAN SEA LEVEL



ROAD CLASSIFICATION  
Light duty ——— Unimproved dirt ———  
○ State Route  
USGS  
Historical File  
Topographic Division

HEALY (C-4), ALASKA  
N6330-W14830/15X30  
1950  
MINOR REVISIONS 1963

FOR SALE BY U.S. GEOLOGICAL SURVEY  
FAIRBANKS, ALASKA DENVER 25, COLORADO WASHINGTON 25, D.C.  
A FOLDER DESCRIBING TOPOGRAPHIC MAPS AND SYMBOLS IS AVAILABLE ON REQUEST

MAY 5 1964