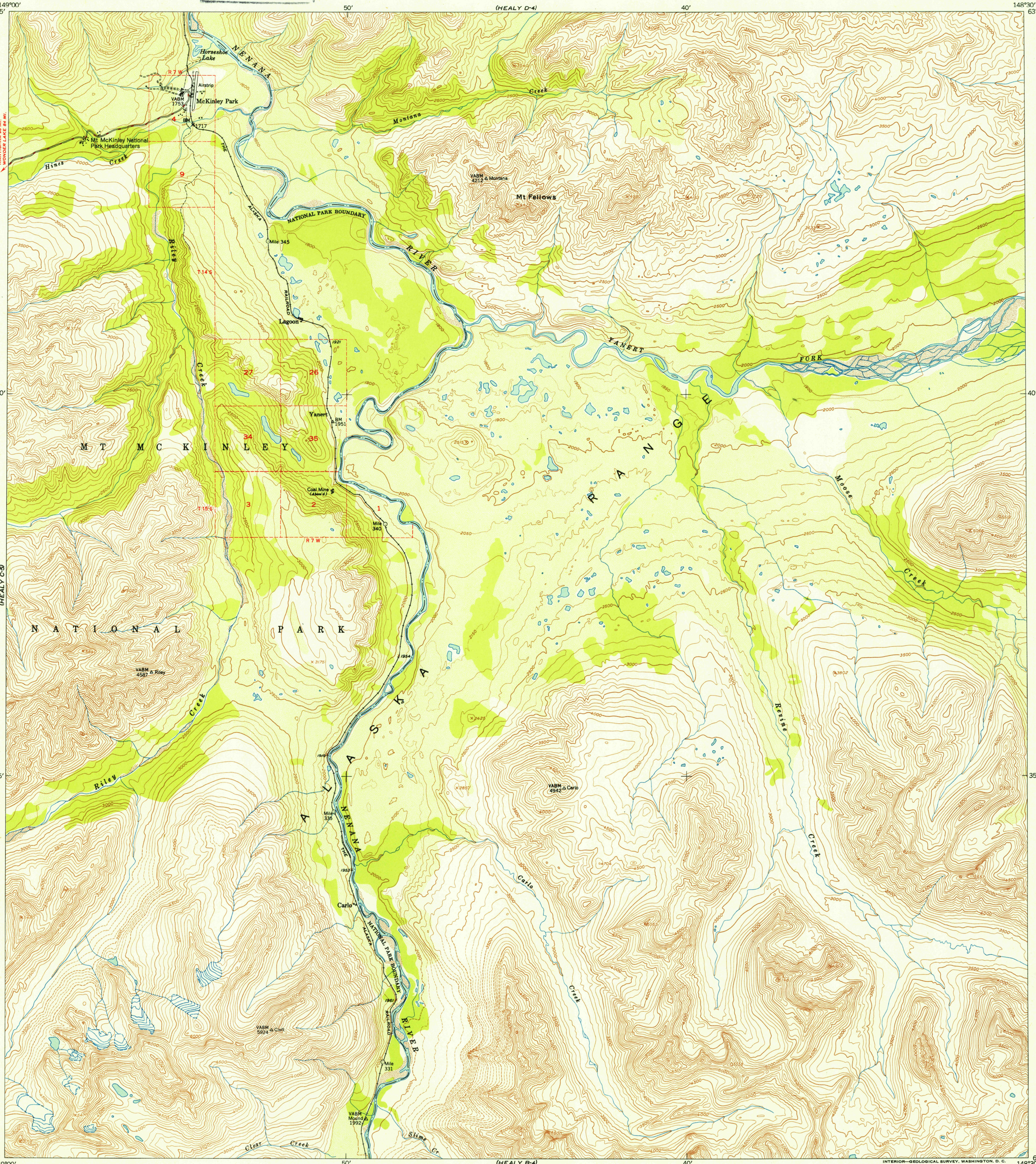


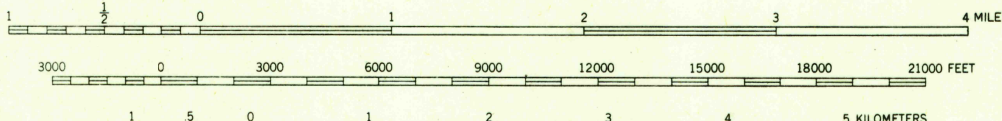
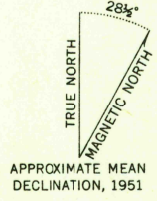
U.S.G.S.  
FILE COPY  
Inspection and Editing.

UNITED STATES  
DEPARTMENT OF THE INTERIOR  
GEOLOGICAL SURVEY

HEALY (C-4) QUADRANGLE  
ALASKA-FOURTH JUDICIAL DIVISION  
1:63 360 SERIES (TOPOGRAPHIC)



Mapped, edited, and published by the Geological Survey  
Control by USGS and USC&GS  
Topography from aerial photographs by multiplex methods  
Aerial photographs taken September 1949  
Universal Transverse Mercator projection, zone 6  
1927 North American datum  
Dashed land lines indicate approximate location  
Unchecked elevations shown in brown



CONTOUR INTERVAL 100 FEET  
DOTTED LINES REPRESENT HALF-INTERVAL CONTOURS  
AREAS NOT SURVEYED IN DETAIL INDICATED BY BROKEN LINES  
DATUM IS MEAN SEA LEVEL

USGS  
Historical File  
Topographic Division

ROAD CLASSIFICATION	
ALL WEATHER ROADS	DRY WEATHER ROADS
Hard-surface	None Improved dirt
Other	Unimproved dirt
Trails	

U.S.G.S.  
FILE COPY  
Inspection and Editing.

HEALY (C-4), ALASKA  
N6330-W14830/15X30  
EDITION OF 1952

FOR SALE BY U. S. GEOLOGICAL SURVEY, FEDERAL CENTER, DENVER, COLORADO OR WASHINGTON 25, D. C.  
A FOLDER DESCRIBING TOPOGRAPHIC MAPS AND SYMBOLS IS AVAILABLE ON REQUEST

MAY 28 1952