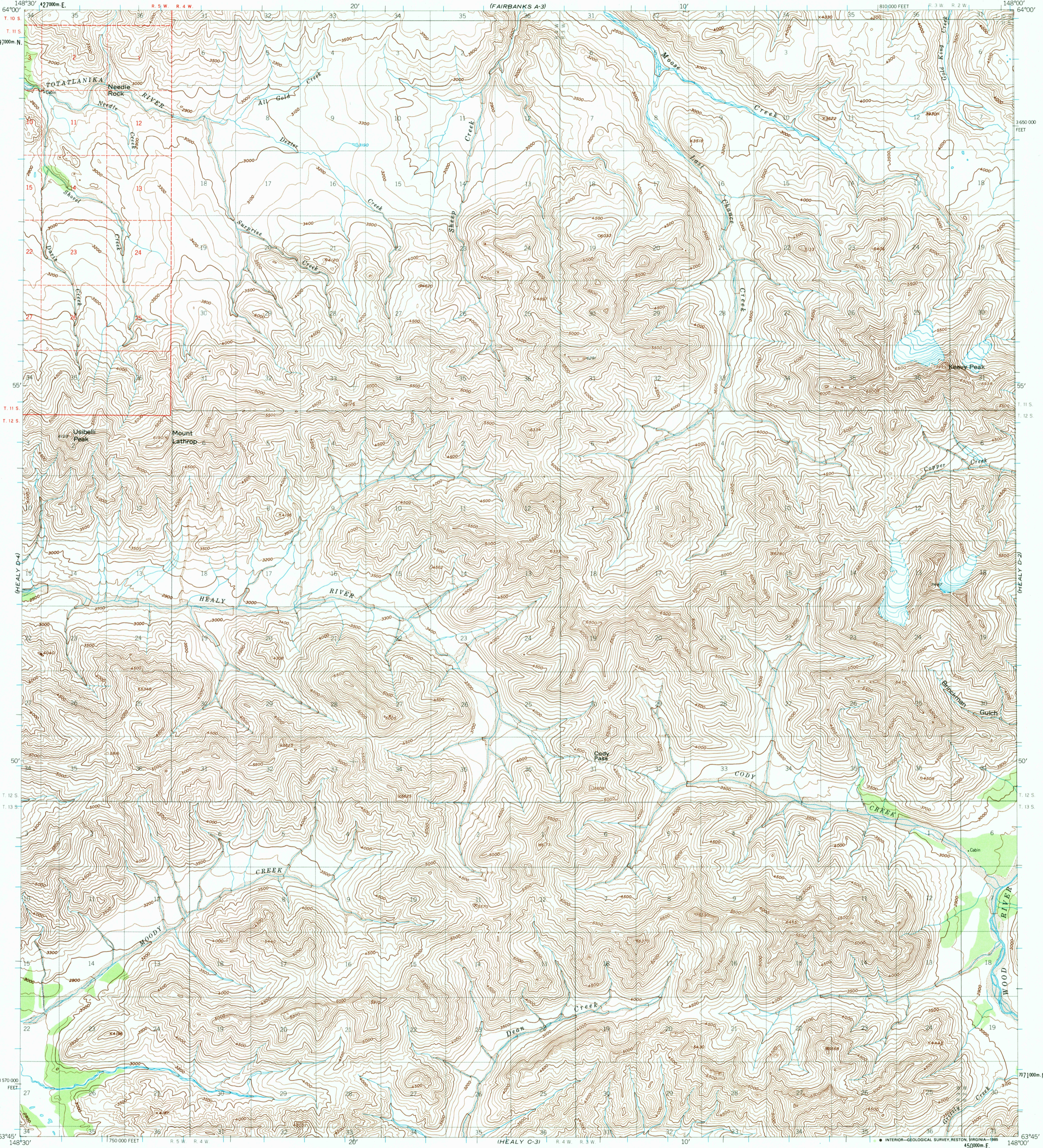
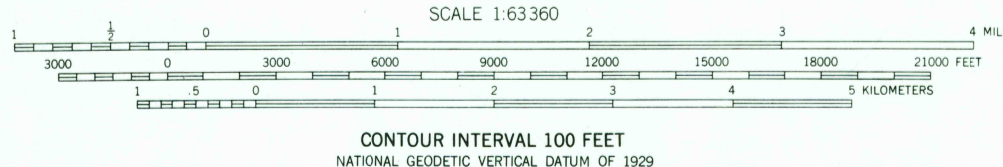
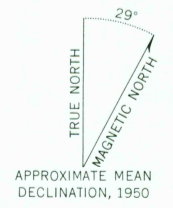


UNITED STATES
DEPARTMENT OF THE INTERIOR
GEOLOGICAL SURVEY

HEALY (D-3) QUADRANGLE
ALASKA
1:63 360 SERIES (TOPOGRAPHIC)

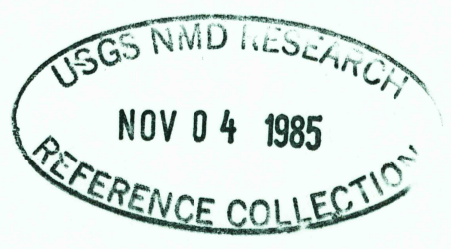


Maped, edited, and published by the Geological Survey
Control by USGS and NOS/NOAA
Topography by photogrammetric methods from aerial photographs
taken 1949, field annotated 1950. Map not field checked.
Projection and 1000-meter grid ticks shown in blue:
Universal Transverse Mercator, zone 6
10,000-foot grid ticks based on Alaska coordinate
system, zone 4. 1927 North American Datum
To place on the predicted North American Datum 1983 move
the projection lines 54 meters north and 117 meters east
Gray land lines represent unsurveyed and unmarked locations
predetermined by the Bureau of Land Management
Folio F-10, Fairbanks Meridian



ROAD CLASSIFICATION
Trails

FOR SALE BY U. S. GEOLOGICAL SURVEY
FAIRBANKS, ALASKA 99701, DENVER, COLORADO 80225, OR RESTON, VIRGINIA 22092
A FOLDER DESCRIBING TOPOGRAPHIC MAPS AND SYMBOLS IS AVAILABLE ON REQUEST



HEALY (D-3), ALASKA
N6345-W14800/15X30
1950
MINOR REVISION 1985