

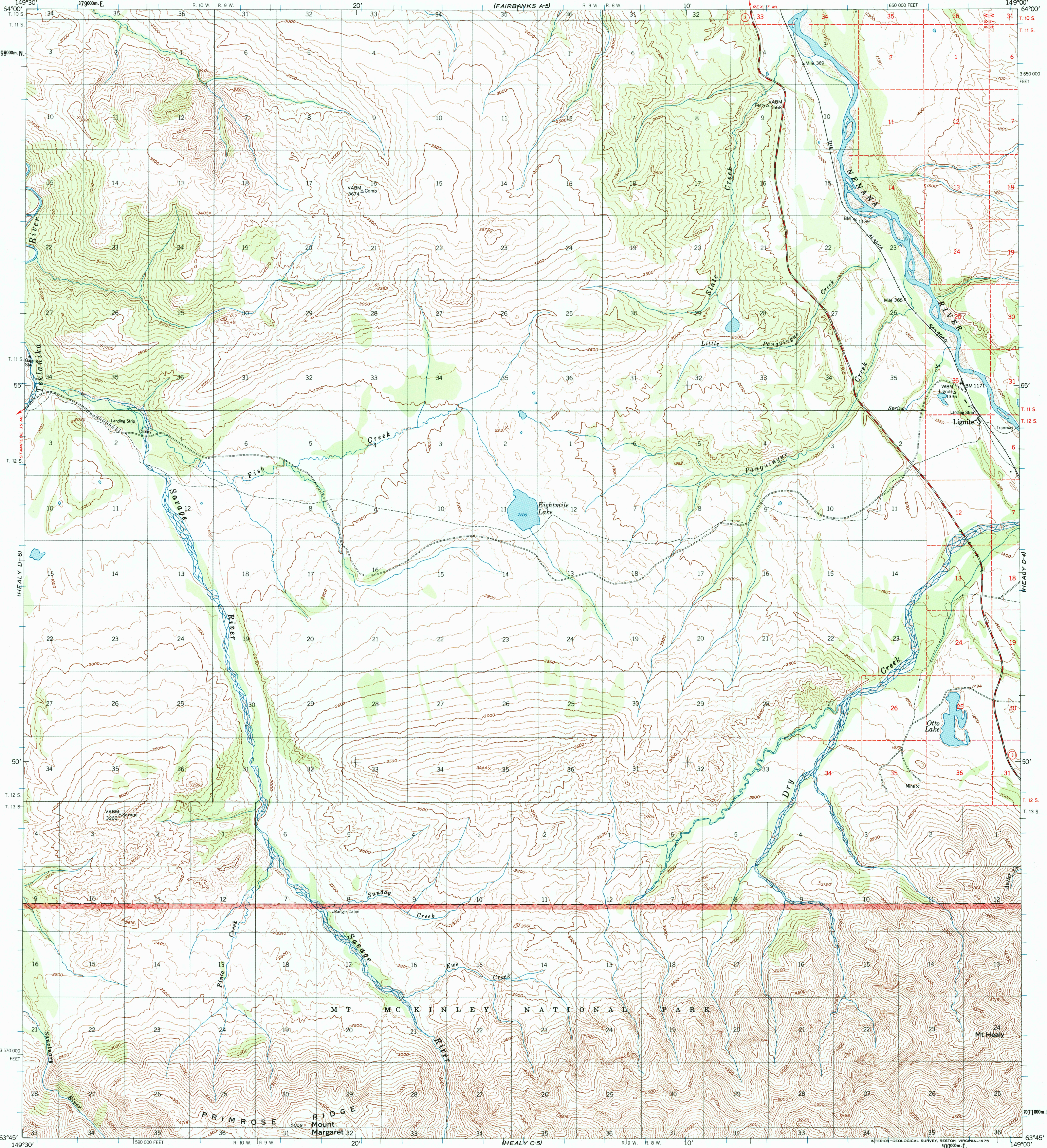
(FAIRBANKS A-6) (HEALY D-6) (HEALY C-6)



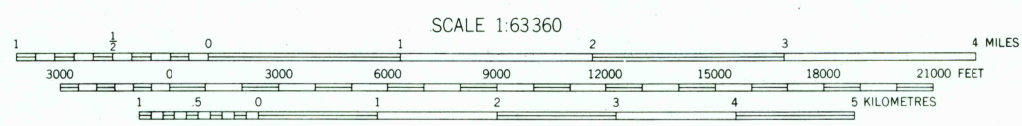
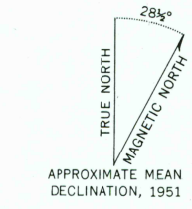
U.S. DEPARTMENT OF THE INTERIOR  
U.S. GEOLOGICAL SURVEY

HEALY (D-5) QUADRANGLE  
ALASKA  
1:63 360 SERIES (TOPOGRAPHIC)

(FAIRBANKS A-4) (HEALY D-4) (HEALY C-4)



Mapped, edited, and published by the Geological Survey  
Control by USGS and USC&GS  
Topography by photogrammetric methods from aerial photographs  
taken 1949, field annotated 1951. Map not field checked  
Universal Transverse Mercator projection, 1927 North American datum  
10,000-foot grid based on Alaska coordinate system, zone 4  
1000-metre Universal Transverse Mercator grid ticks,  
zone 6, shown in blue  
Gray land lines represent unsurveyed and unmarked  
locations predetermined by the Bureau of Land Management  
Folio F-10, Fairbanks Meridian



CONTOUR INTERVAL 100 FEET  
DOTTED LINES REPRESENT 50 FOOT CONTOURS  
NATIONAL GEODETIC VERTICAL DATUM OF 1929

FOR SALE BY U.S. GEOLOGICAL SURVEY, P.O. BOX 25286, DENVER, COLORADO 80225  
A FOLDER DESCRIBING TOPOGRAPHIC MAPS AND SYMBOLS IS AVAILABLE ON REQUEST



ROAD CLASSIFICATION  
Medium-duty ——— Unimproved dirt ———  
State Route ○

RECEIVED  
NOV 3 0 2001  
HEALY (D-5), ALASKA  
N6345-W14900/15X30  
1951  
MINOR REVISIONS 1973



USGS NW11  
HISTORICAL MAP ARCHIVES

