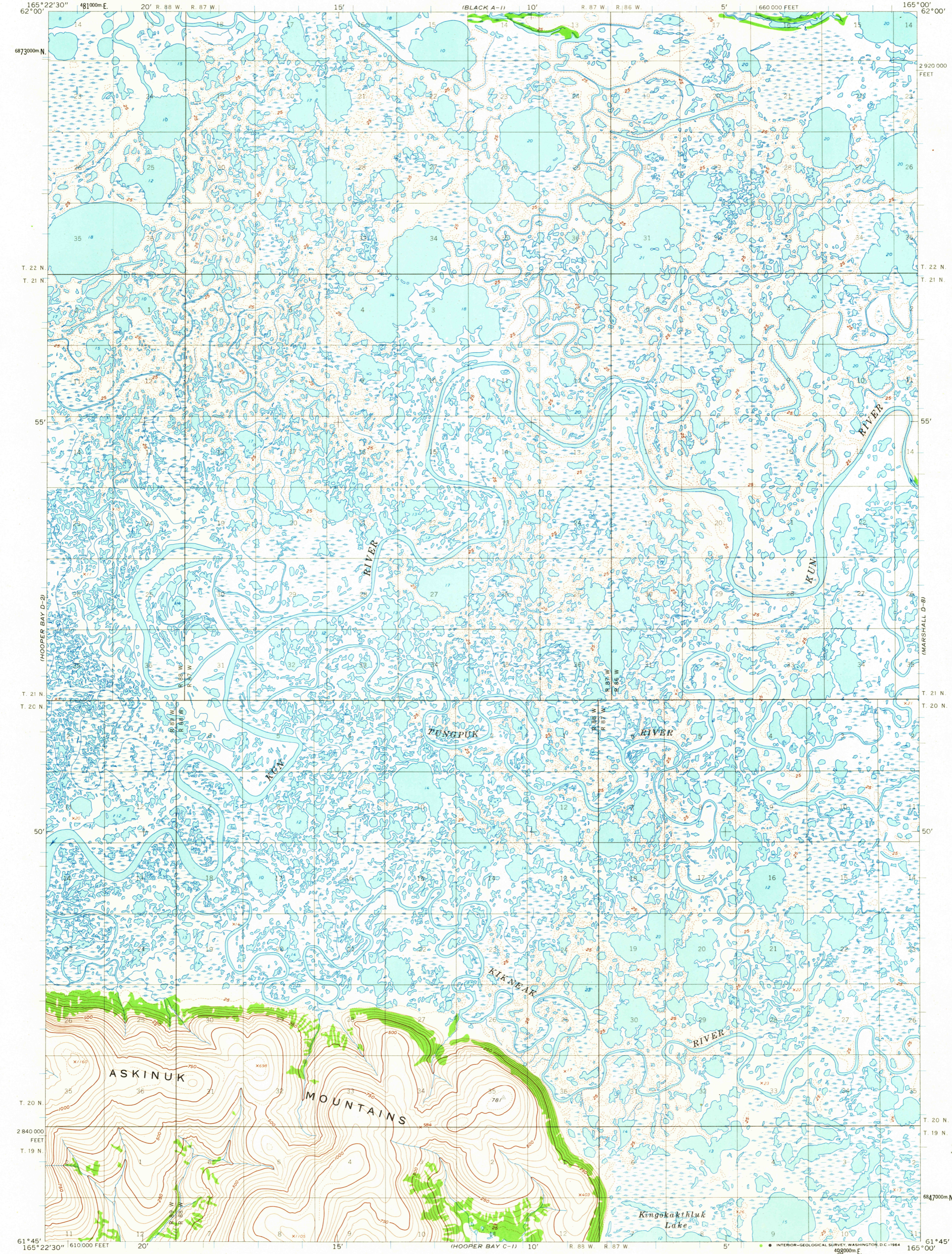


UNITED STATES
DEPARTMENT OF THE INTERIOR
GEOLOGICAL SURVEY

HOOPER BAY (D-1) QUADRANGLE
ALASKA
1:63 360 SERIES (TOPOGRAPHIC)



Mapped by the Army Map Service
Edited and published by the Geological Survey
Control by USGS, USC&GS, and USCE

Topography by photogrammetric methods from aerial photographs
taken 1951, 1953, and 1955, field annotated 1952
Map not field checked

Universal Transverse Mercator projection, 1927 North American datum
10,000-foot grid based on Alaska coordinate system, zone 8
1000-meter Universal Transverse Mercator grid ticks,
zone 3, shown in blue

Land lines represent unsurveyed and unmarked locations
predetermined by the Bureau of Land Management
Folio S-7, Seward Meridian

TRUE NORTH
MAGNETIC NORTH
APPROXIMATE MEAN
DECLINATION, 1952

SCALE 1:63 360



CONTOUR INTERVAL 50 FEET
DOTTED LINES REPRESENT 25-FOOT CONTOURS
DATUM IS MEAN SEA LEVEL

FOR SALE BY U.S. GEOLOGICAL SURVEY
FAIRBANKS, ALASKA DENVER 25, COLORADO WASHINGTON 25, D. C.
A FOLDER DESCRIBING TOPOGRAPHIC MAPS AND SYMBOLS IS AVAILABLE ON REQUEST



ROAD CLASSIFICATION
No roads or trails in this area

HOOPER BAY (D-1), ALASKA
N6145-W16500/15 X 22.5

1952

USCS
Historical File
Topographic Division

20570
U.S.G.S.
FILE COPY
TOPOGRAPHIC DIVISION