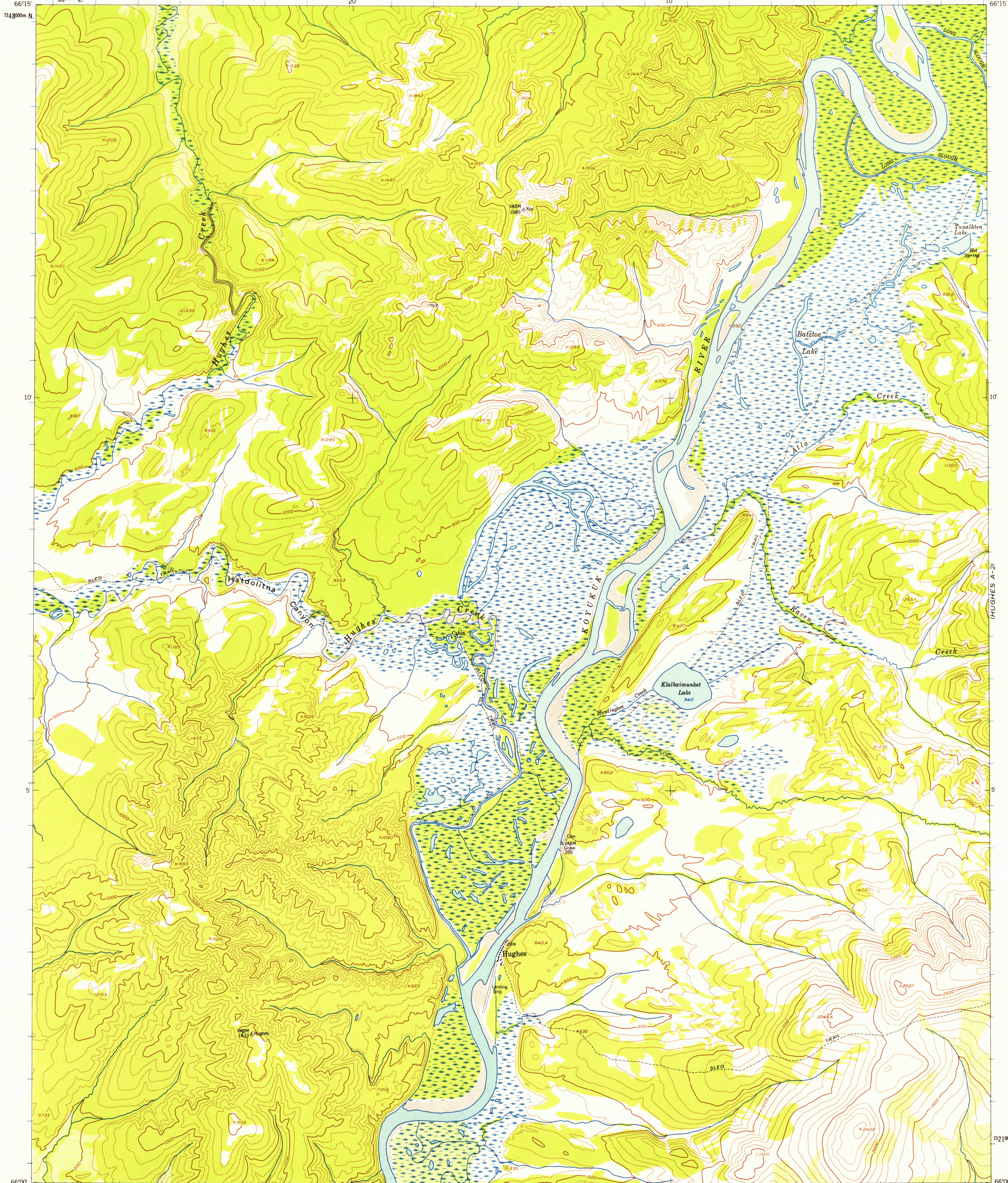


154°30' 66°15' N
734800m. N

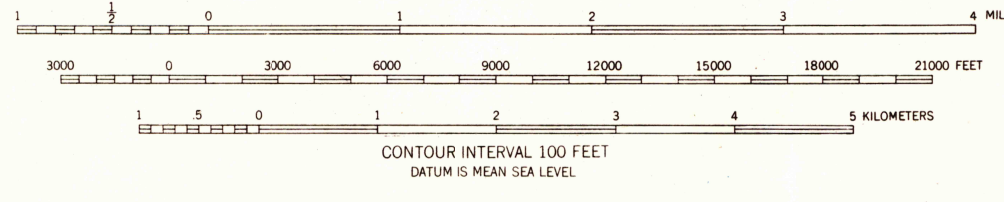
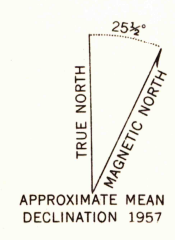
20

10

154°00' 66°15' N



Mapped, edited, and published by the Geological Survey
Control by USGS and USC&GS
Topography from aerial photographs by ER-55 plotter 1957
Aerial photographs taken 1955. Map not field checked
Universal Transverse Mercator projection
1927 North American datum
1000-meter Universal Transverse Mercator grid ticks,
zone 5, shown in blue
Unchecked elevations are shown in brown and blue



USGS
Historical File
Topographic Division



HUGHES (A-3), ALASKA
N6600—W15400/15X30
1955

FOR SALE BY U.S. GEOLOGICAL SURVEY
FAIRBANKS, ALASKA DENVER 2, COLORADO WASHINGTON 25, D.C.
A FOLDER DESCRIBING TOPOGRAPHIC MAPS AND SYMBOLS IS AVAILABLE ON REQUEST

U.S.G.S.
FILE COPY
TOPOGRAPHIC DIVISION

MAR 12 1958

1900