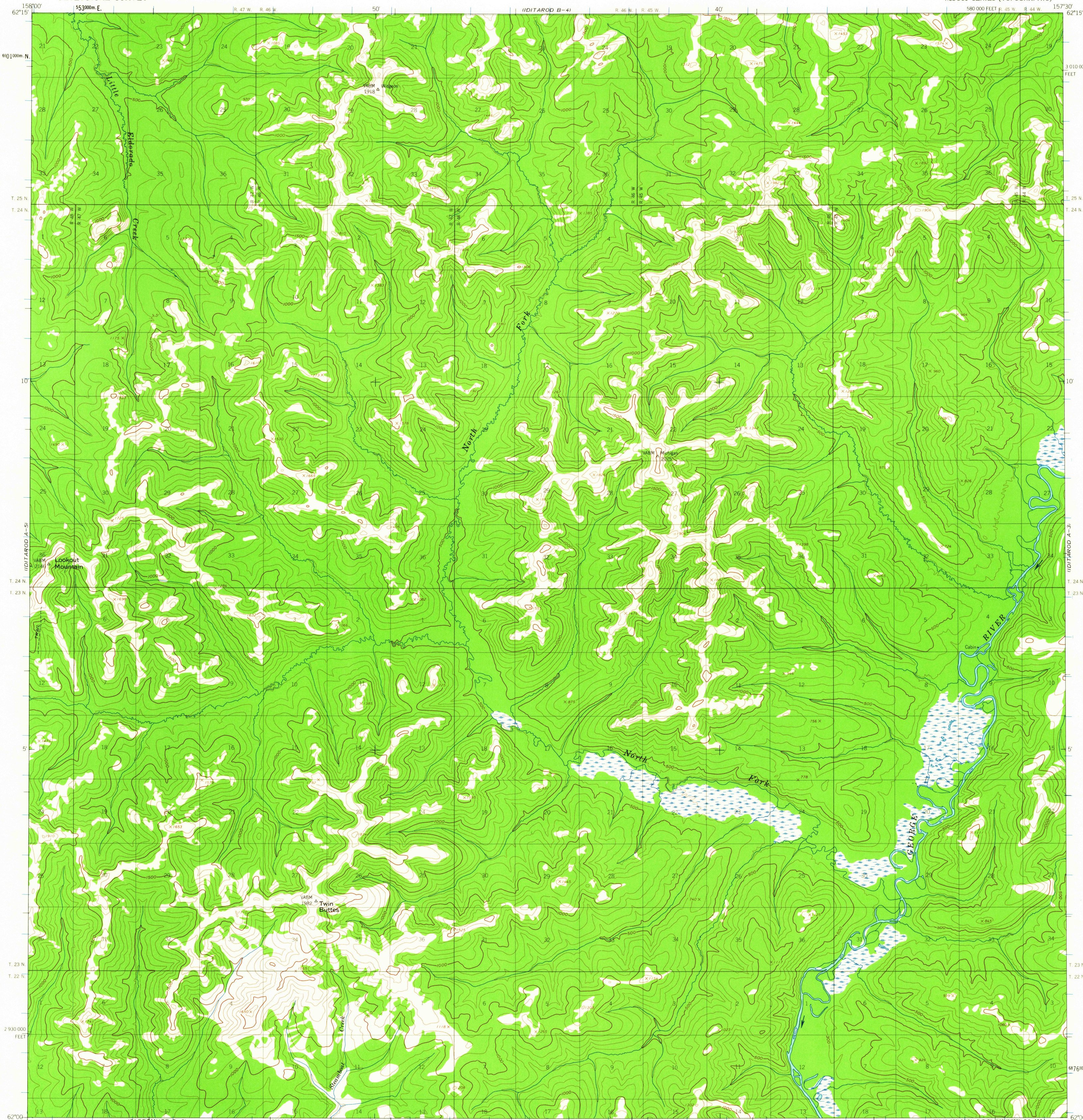
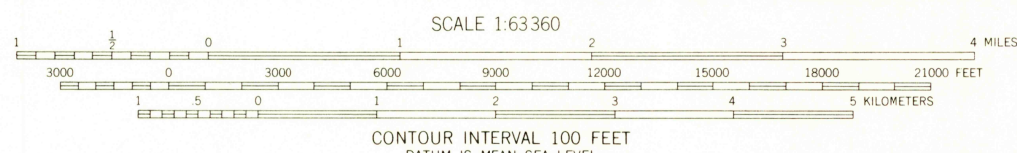
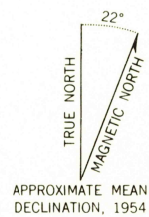


UNITED STATES
DEPARTMENT OF THE INTERIOR
GEOLOGICAL SURVEY

IDITAROD (A-4) QUADRANGLE
ALASKA
1:63,360 SERIES (TOPOGRAPHIC)



Mapped, edited, and published by the Geological Survey
Control by USCE and USC&GS
Topography by photogrammetric methods from aerial photographs
taken 1953, field annotated 1954. Map not field checked
Universal Transverse Mercator projection, 1927 North American Datum
10,000-foot grid based on Alaska coordinate system, zone 6
1000-meter Universal Transverse Mercator grid ticks,
zone 4, shown in blue
Land lines represent unsurveyed and unmarked locations
predetermined by the Bureau of Land Management
Folio S-4, Seward Meridian
Swamps, as portrayed, indicate only the wetter areas,
usually of low relief, as interpreted from aerial photographs



USGS
Historical File
Topographic Division

ROAD CLASSIFICATION
Trails



FOR SALE BY U. S. GEOLOGICAL SURVEY
FAIRBANKS, ALASKA DENVER 25, COLORADO WASHINGTON 25, D. C.
A FOLDER DESCRIBING TOPOGRAPHIC MAPS AND SYMBOLS IS AVAILABLE ON REQUEST

IDITAROD (A-4), ALASKA
N6200-W15730/15X30
1954

3175