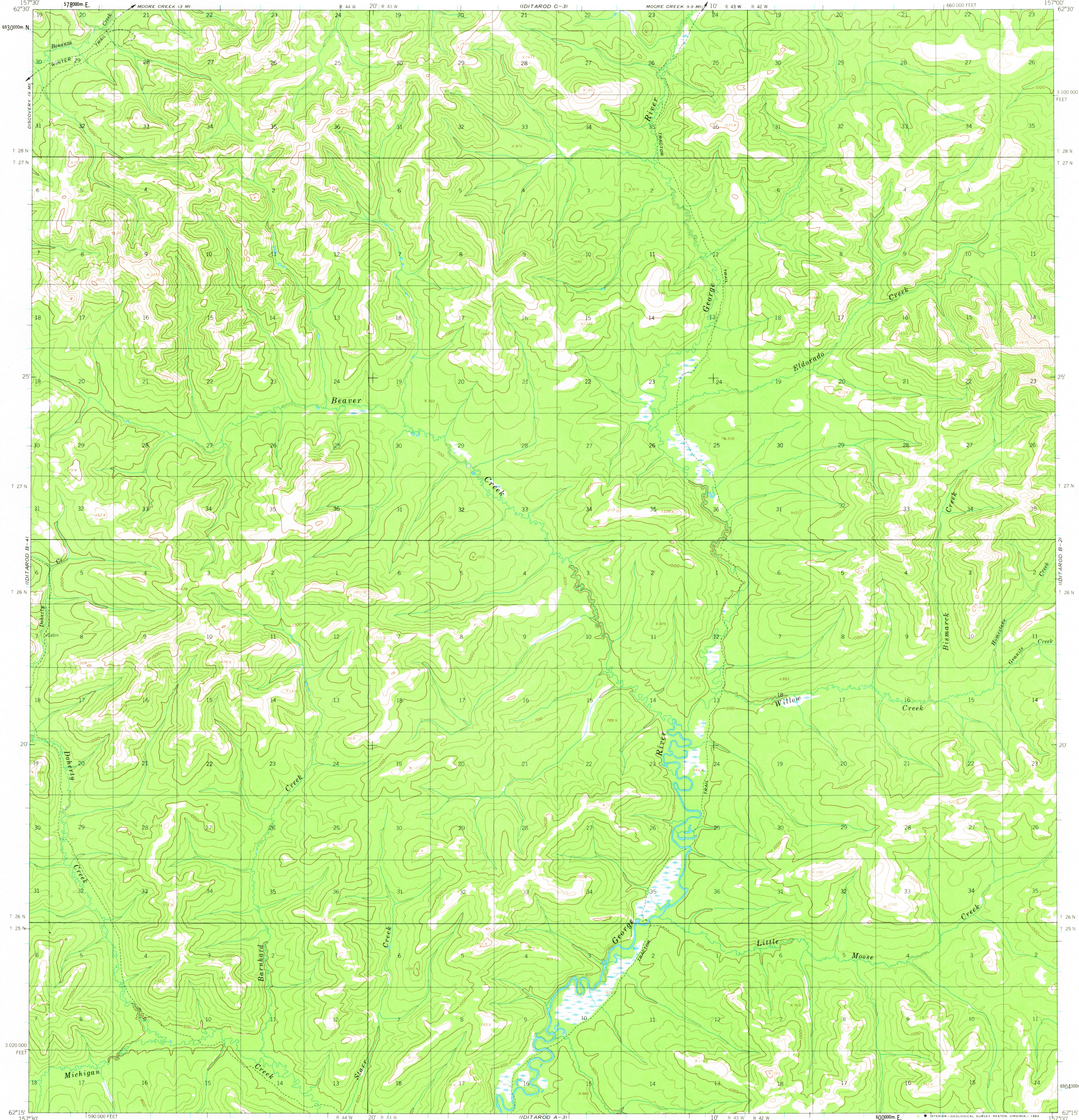


UNITED STATES  
DEPARTMENT OF THE INTERIOR  
GEOLOGICAL SURVEY

IDITAROD (B-3) QUADRANGLE  
ALASKA  
1:63 360 SERIES (TOPOGRAPHIC)



Mapped, edited, and published by the Geological Survey  
Control by USC&GS  
Topography by photogrammetric methods from aerial photographs  
taken 1953, field annotated 1954. Map not field checked  
Universal Transverse Mercator projection, 1927 North American Datum  
10,000 foot grid based on Alaska coordinate system, zone 6  
1000 meter Universal Transverse Mercator grid ticks,  
zone 4, shown in blue  
Land lines represent unsurveyed and unmarked locations  
predetermined by the Bureau of Land Management  
Folio S.4, Seward Meridian  
Swamps, as portrayed indicate only the wetter areas,  
usually of low relief, as interpreted from aerial photographs  
To place on the predicted North American Datum 1983 move  
the projection lines 77 meters north and 126 meters east

TRUE NORTH  
MAGNETIC NORTH  
APPROXIMATE MEAN  
DECLINATION, 1954

SCALE 1:63 360  
3000 0 3000 6000 9000 12000 15000 18000 21000 FEET  
1 2 3 4 5 KILOMETERS  
CONTOUR INTERVAL 100 FEET  
NATIONAL GEODETIC VERTICAL DATUM OF 1929

FOR SALE BY U. S. GEOLOGICAL SURVEY  
FAIRBANKS, ALASKA 99701, DENVER, COLORADO 80225, OR RESTON, VIRGINIA 22092  
A FOLDER DESCRIBING TOPOGRAPHIC MAPS AND SYMBOLS IS AVAILABLE ON REQUEST



ROAD CLASSIFICATION  
Trails

IDITAROD (B-3) ALASKA  
N6215-W15700/15X30  
1954

RETURN TO:  
MMD HISTORICAL MAP ARCHIVES  
USGS NATIONAL CENTER, MS-522  
RESTON, VA 22092