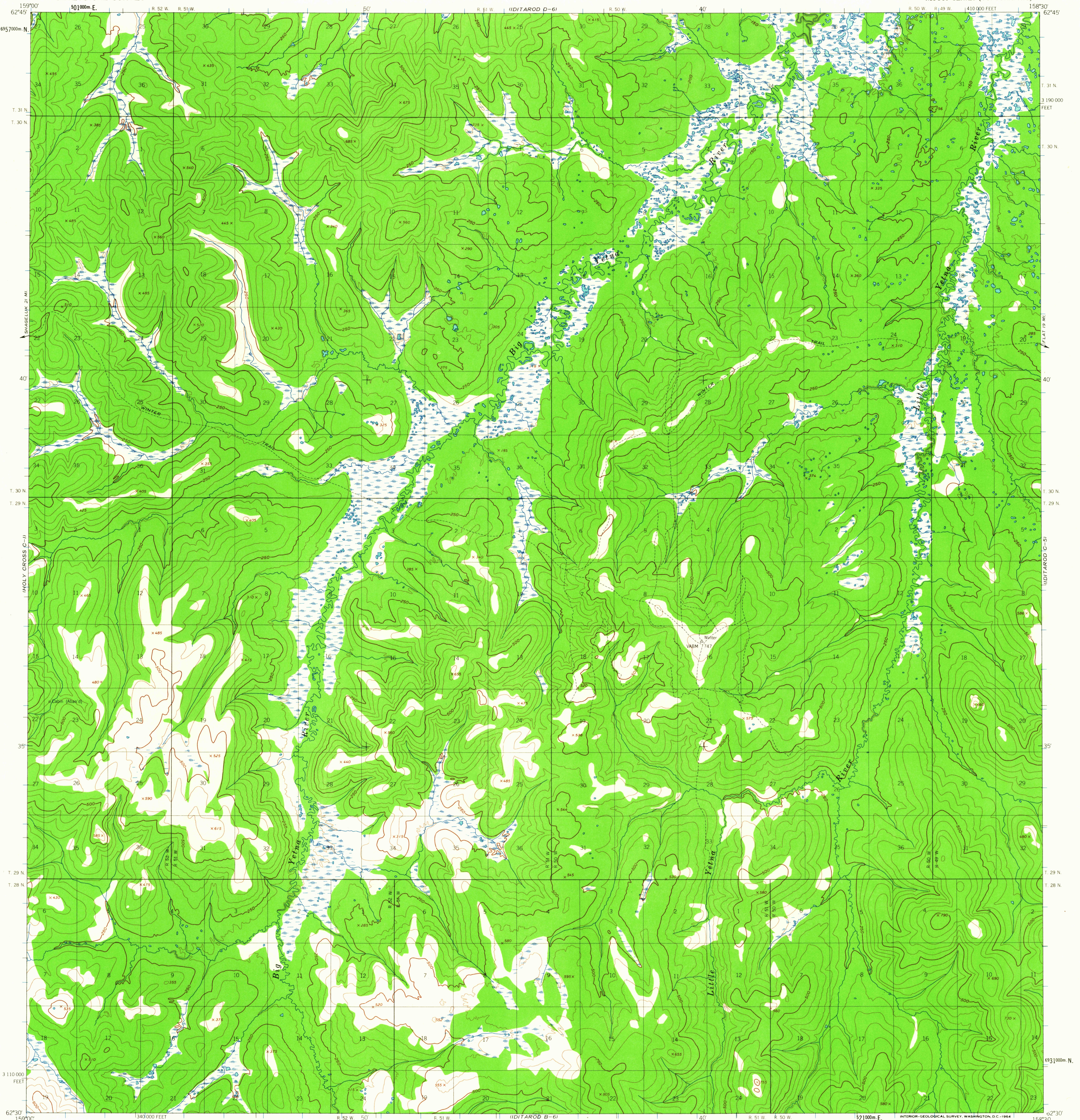
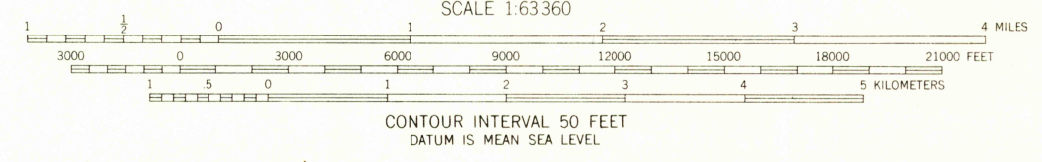
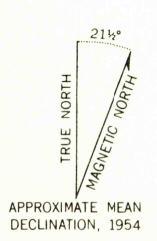


UNITED STATES  
DEPARTMENT OF THE INTERIOR  
GEOLOGICAL SURVEY

IDITAROD (C-6) QUADRANGLE  
ALASKA  
1:63360 SERIES (TOPOGRAPHIC)



Mapped, edited, and published by the Geological Survey  
Control by US&GS  
Topography by photogrammetric methods from aerial photographs taken 1953, field annotated 1954. Map not field checked.  
Universal Transverse Mercator projection, 1927 North American Datum 10,000-foot grid based on Alaska coordinate system, zone 6 1000-meter Universal Transverse Mercator grid ticks, zone 4, shown in blue.  
Land lines represent unsurveyed and unmarked locations predetermined by the Bureau of Land Management Folio S-5, Fairbanks Meridian.  
Swamps, as portrayed indicate only the wetter areas, usually of low relief, as interpreted from aerial photographs.



USGS  
Historical File  
Topographic Division

ROAD CLASSIFICATION  
Trails -----

U.S.G.S.  
ALASKA  
QUADRANGLE LOCATION  
FREE COPY  
TOPOGRAPHIC DIVISION

IDITAROD (C-6), ALASKA  
N6230-W15830/15X30  
1954

2695

FOR SALE BY U. S. GEOLOGICAL SURVEY  
FAIRBANKS, ALASKA DENVER 25, COLORADO WASHINGTON 25, D. C.  
A FOLDER DESCRIBING TOPOGRAPHIC MAPS AND SYMBOLS IS AVAILABLE ON REQUEST