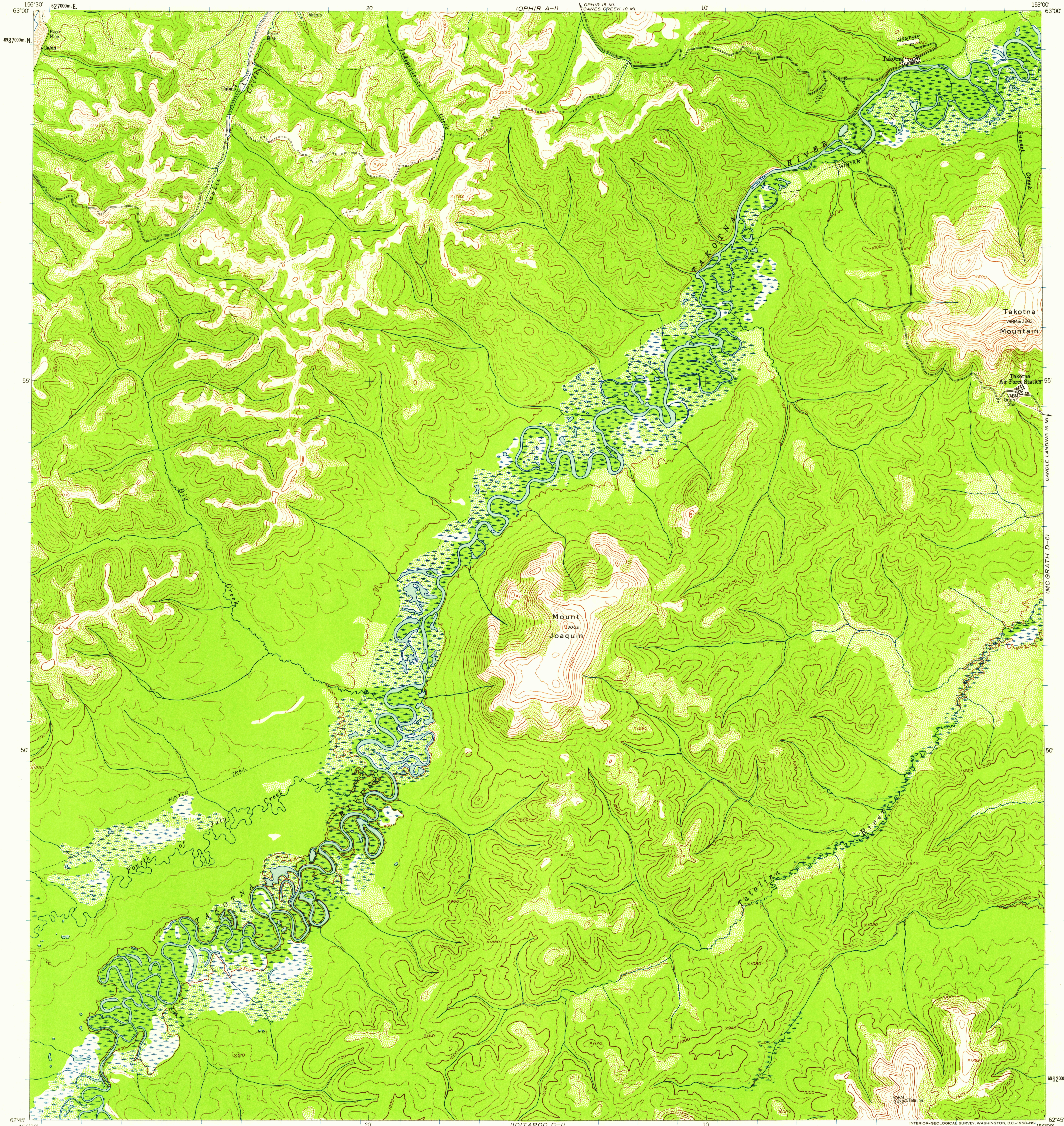


OPHIR A-2

UNITED STATES
DEPARTMENT OF THE INTERIOR
GEOLOGICAL SURVEY

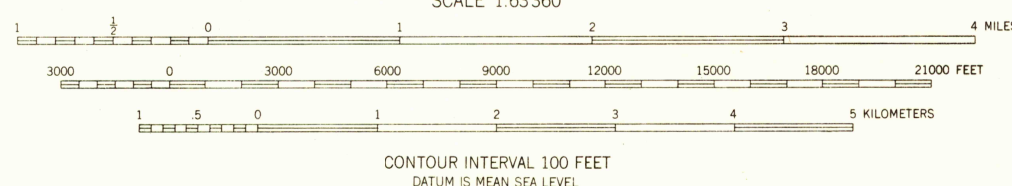
IDITAROD (D-1) QUADRANGLE
ALASKA—FOURTH JUDICIAL DIVISION
1:63 360 SERIES (TOPOGRAPHIC)

WEDFRA A-6



Mapped, edited, and published by the Geological Survey
Control by USCGS and USCE
Topography from aerial photographs by multiplex methods 1956
Aerial photographs taken 1952, 1953, and 1955. Map not field checked
Universal Transverse Mercator projection
1927 North American datum
1000-meter Universal Transverse Mercator grid ticks,
zone 4, shown in blue
Unchecked elevations are shown in brown

23°
TRUE NORTH
MAGNETIC NORTH
APPROXIMATE MEAN
DECLINATION, 1956



FOR SALE BY U.S. GEOLOGICAL SURVEY
FAIRBANKS, ALASKA DENVER 2, COLORADO WASHINGTON 25, D.C.
A FOLDER DESCRIBING TOPOGRAPHIC MAPS AND SYMBOLS IS AVAILABLE ON REQUEST

USGS
Historical File
Topographic Division

ROAD CLASSIFICATION
Light-duty Unimproved dirt



U.S.G.S.
FILE COPY
TOPOGRAPHIC DIVISION

IDITAROD (D-1), ALASKA
N6245-W15600/15X30
1955

JUL 2 8 1958