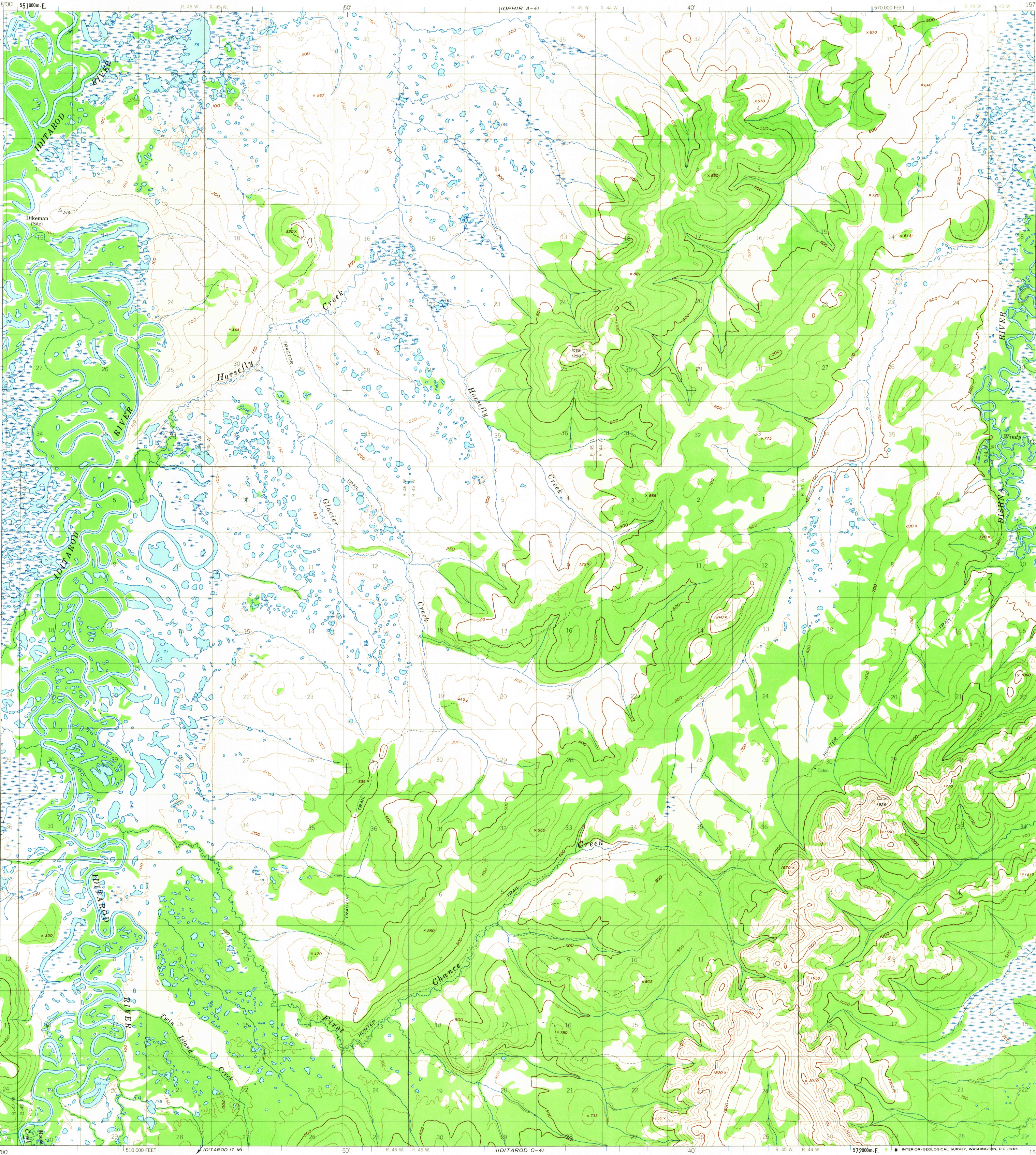


UNITED STATES
DEPARTMENT OF THE INTERIOR
GEOLOGICAL SURVEY

IDITAROD (D-4) QUADRANGLE
ALASKA
1:63 360 SERIES (TOPOGRAPHIC)



Mapped, edited, and published by the Geological Survey
Control by USC&GS
Topography by photogrammetric methods from aerial photographs
taken 1953; field annotated 1954. Map not field checked.
Universal Transverse Mercator projection, 1927 North American datum
10,000-foot grid based on Alaska coordinate system, zone 6
1000-meter Universal Transverse Mercator grid ticks,
zone 4, shown in blue
Land lines represent unsurveyed and unmarked locations
predetermined by the Bureau of Land Management
Folio S-4, Seward Meridian
Swamps, as portrayed indicate only the wetter areas,
usually of low relief, as interpreted from aerial photographs

TRUE NORTH
MAGNETIC NORTH
APPROXIMATE MEAN
DECLINATION, 1954

SCALE 1:63 360
CONTOUR INTERVAL 100 FEET
DOTTED LINES REPRESENT 50 FOOT CONTOURS
DATUM IS MEAN SEA LEVEL

U.S.G.S.
FILE COPY
TOPOGRAPHIC DIVISION
USGS
Historical File
Topographic

ROAD CLASSIFICATION
Trails
NOV 8 1965
IDITAROD (D-4), ALASKA
N6245-W15730/15X30
1954

FOR SALE BY U.S. GEOLOGICAL SURVEY
FAIRBANKS, ALASKA, DENVER 25, COLORADO OR WASHINGTON 25, D.C.
A FOLDER DESCRIBING TOPOGRAPHIC MAPS AND SYMBOLS IS AVAILABLE ON REQUEST