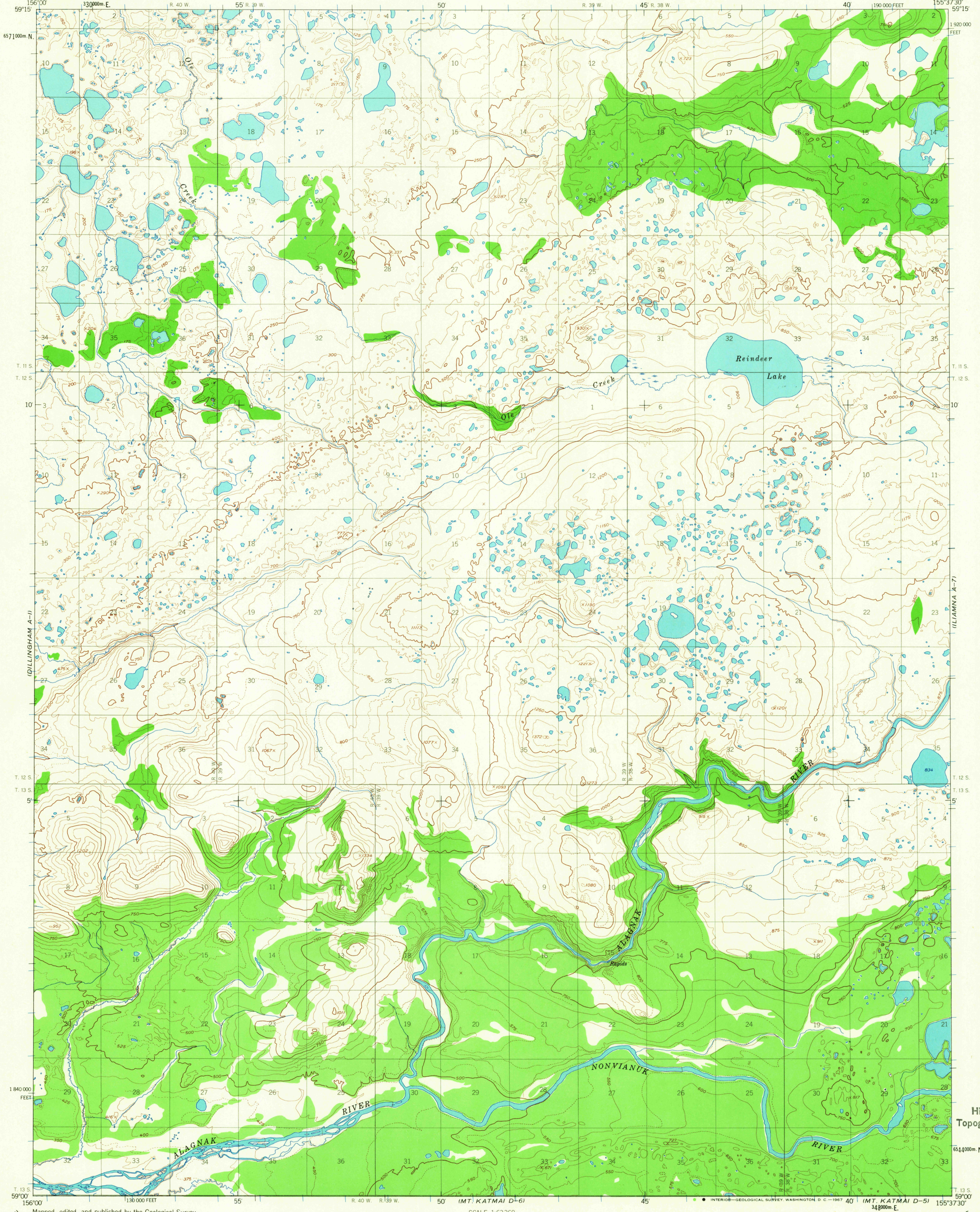
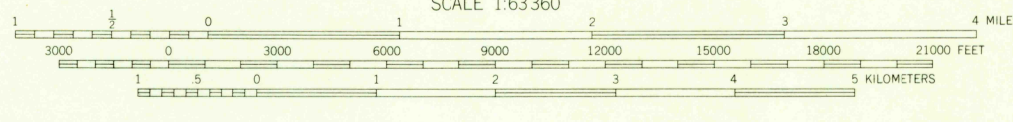
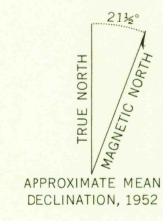


ILIAMNA B-7



USGS  
Historical File  
Topographic Division

Mapped, edited, and published by the Geological Survey  
Control by USCE  
Topography by photogrammetric methods from aerial photographs  
taken 1951, field annotated 1952. Map not field checked  
Universal Transverse Mercator projection, 1927 North American datum  
10,000-foot grid based on Alaska coordinate system, zone 5  
1000-meter Universal Transverse Mercator grid ticks,  
zone 5, shown in blue  
Land lines represent unsurveyed and unmarked locations  
predetermined by the Bureau of Land Management  
Folio S-18, Seward Meridian  
Swamps, as portrayed, indicate only the wetter areas,  
usually of low relief, as interpreted from aerial photographs



CONTOUR INTERVAL 50 FEET  
DASHED LINES REPRESENT 25-FOOT CONTOURS  
DATUM IS MEAN SEA LEVEL



ROAD CLASSIFICATION  
No roads or trails in this area

FOR SALE BY U. S. GEOLOGICAL SURVEY  
FAIRBANKS, ALASKA 99701, DENVER, COLORADO 80225, OR WASHINGTON, D. C. 20242  
A FOLDER DESCRIBING TOPOGRAPHIC MAPS AND SYMBOLS IS AVAILABLE ON REQUEST

ILIAMNA (A-8), ALASKA  
N5900-W15537.5/15X22.5

1952  
MINOR REVISIONS 1966

2040  
SEP 26 1967