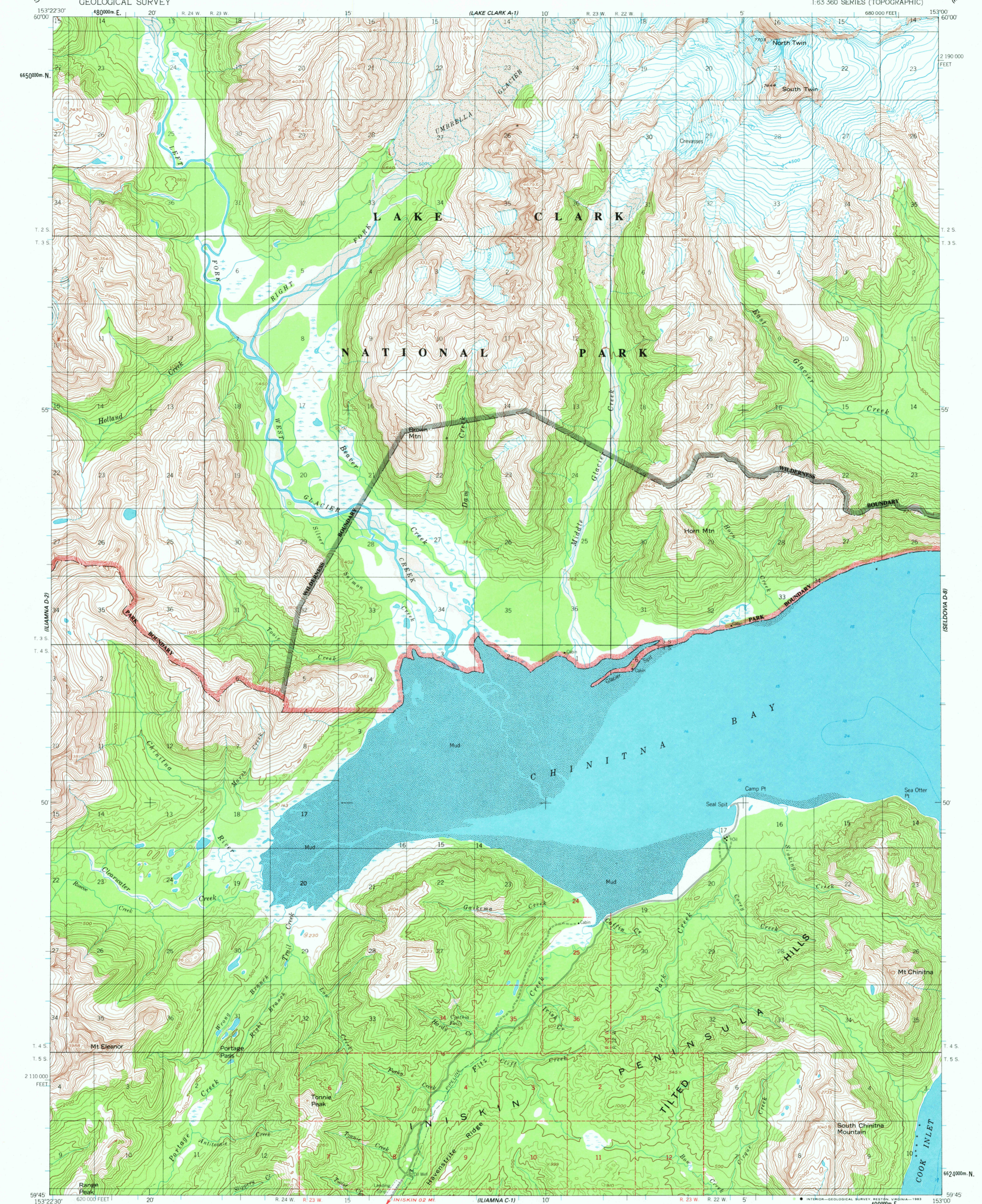
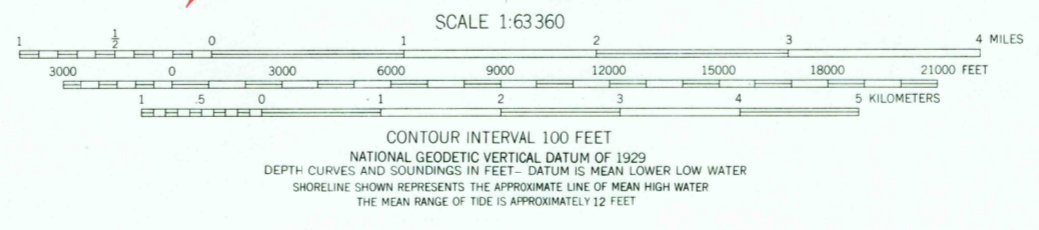
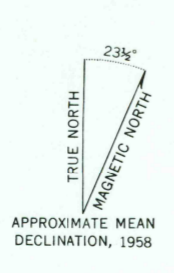


(LAKE CLARK A-2)

(KENAI A-8)



Mapped, edited, and Published by the Geological Survey
Control by USGS and NOS/NOAA
Topography by photogrammetric methods from aerial photographs taken 1957, field annotated 1958. Map not field checked
Selected hydrographic data compiled from NOS/NOAA charts
This information is not intended for navigational purposes
Projection and 1,000-meter grid ticks shown in blue
Universal Transverse Mercator, zone 5
10,000-foot grid ticks based on Alaska coordinate system, zone 5
1927 North American datum. To place on the predicted North American Datum 1983 move the projection lines 73 meters north and 125 meters east
Gray land lines represent unsurveyed and unmarked locations predetermined by the Bureau of Land Management Folio S-17, Seward Meridian
Swamps, as portrayed, indicate only the wetter areas, usually of low relief, as interpreted from aerial photographs
The Alaska Maritime National Wildlife Refuge consists of all the public land in the coastal waters and adjacent seas of Alaska consisting of islands, islets, rocks, reefs, capes, and spires
There may be private inholdings within the boundaries of the National or State reservations shown on this map



FOR SALE BY U. S. GEOLOGICAL SURVEY
FAIRBANKS, ALASKA 99701, DENVER, COLORADO 80225, OR RESTON, VIRGINIA 22092
A FOLDER DESCRIBING TOPOGRAPHIC MAPS AND SYMBOLS IS AVAILABLE ON REQUEST



ROAD CLASSIFICATION
Light-duty ——— Unimproved dirt - - - - -

ILIAMNA (D-1), ALASKA
N5945-W15300/1522.5
1958
MINOR REVISIONS 1982

MAY 4 1983
1700