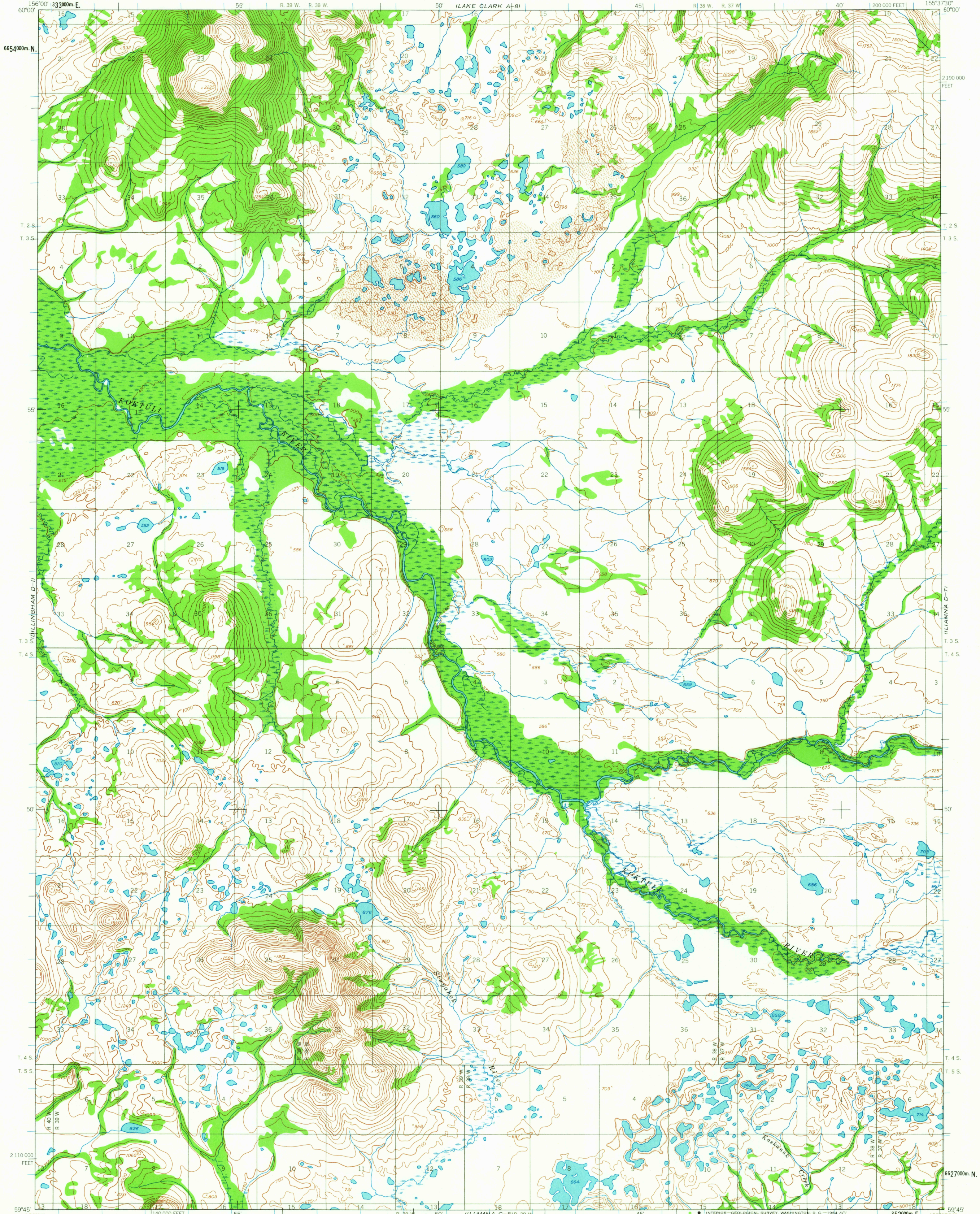


UNITED STATES
DEPARTMENT OF THE INTERIOR
GEOLOGICAL SURVEY

ILIAMNA (D-8) QUADRANGLE
ALASKA
1:63 360 SERIES (TOPOGRAPHIC)



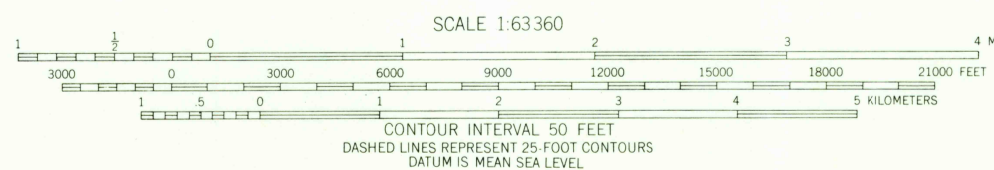
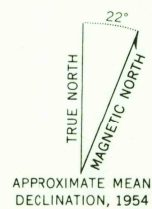
Mapped by the Army Map Service
Published for civil use by the Geological Survey

Control by USC&GS and USCE

Topography by photogrammetric methods from aerial photographs
taken 1953 and 1955, field annotated 1954. Map not field checked

Universal Transverse Mercator projection. 1927 North American datum
10,000-foot grid based on Alaska coordinate system, zone 5
1000-meter Universal Transverse Mercator grid ticks,
zone 5, shown in blue

Land lines represent unsurveyed and unmarked locations
predetermined by the Bureau of Land Management
Folio S-18, Seward Meridian



CONTOUR INTERVAL 50 FEET
DASHED LINES REPRESENT 25-FOOT CONTOURS
DATUM IS MEAN SEA LEVEL

FOR SALE BY U.S. GEOLOGICAL SURVEY
FAIRBANKS, ALASKA DENVER 25, COLORADO WASHINGTON 25, D.C.
A FOLDER DESCRIBING TOPOGRAPHIC MAPS AND SYMBOLS IS AVAILABLE ON REQUEST

ROAD CLASSIFICATION
No roads or trails in this area



ILIAMNA (D-8), ALASKA
N5945-W15537.5/15X22.5

1954

DEC 1 1964

USGS
Historical File
Topographic Division

FILE COPY
TOPOGRAPHIC DIVISION

2250