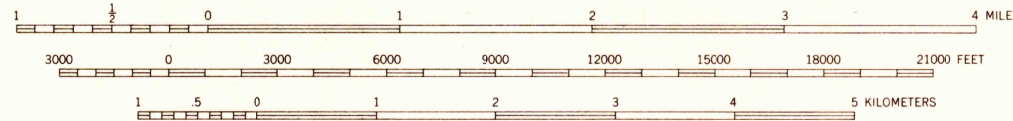
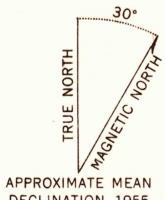


U.S.G.S.
FILE COPY
TOPOGRAPHIC DIVISION

U.S.G.S.
FILE COPY
TOPOGRAPHIC DIVISION

Mapped, edited, and published by the Geological Survey
Control by USGS and USC&GS
Hydrography compiled from USC&GS charts 8202 (1:203,180 scale)
6235, and 8302
Topography from aerial photographs by multiplex methods 1955
Aerial photographs taken 1948. Map not field checked
Universal Transverse Mercator projection, zone 8
1927 North American datum
Entire land area is within the Tongass National Forest
Unchecked elevations are shown in brown and blue



CONTOUR INTERVAL 100 FEET
DATUM IS MEAN SEA LEVEL
DEPTH CURVES IN FEET-DATUM IS MEAN LOWER LOW WATER
SHORELINE SHOWN REPRESENTS THE APPROXIMATE LINE OF MEAN HIGH WATER
THE AVERAGE RANGE OF TIDE IS 13 FEET IN CHATHAM STRAIT
AND 14 FEET IN YOUNG BAY

FOR SALE BY U.S. GEOLOGICAL SURVEY
FAIRBANKS, ALASKA FEDERAL CENTER, DENVER 2, COLORADO WASHINGTON 25, D.C.
A FOLDER DESCRIBING TOPOGRAPHIC MAPS AND SYMBOLS IS AVAILABLE ON REQUEST

ROAD CLASSIFICATION
ALL WEATHER ROADS DRY WEATHER ROADS
Hard-surface.....None Improved dirt.....None
Other.....None Unimproved dirt.....None
Trails.....

JUNEAU (A-3), ALASKA
N5800-W13440/15X20
1948

USGS
Historical File
Topographic Division

JUL 3 1956
2085