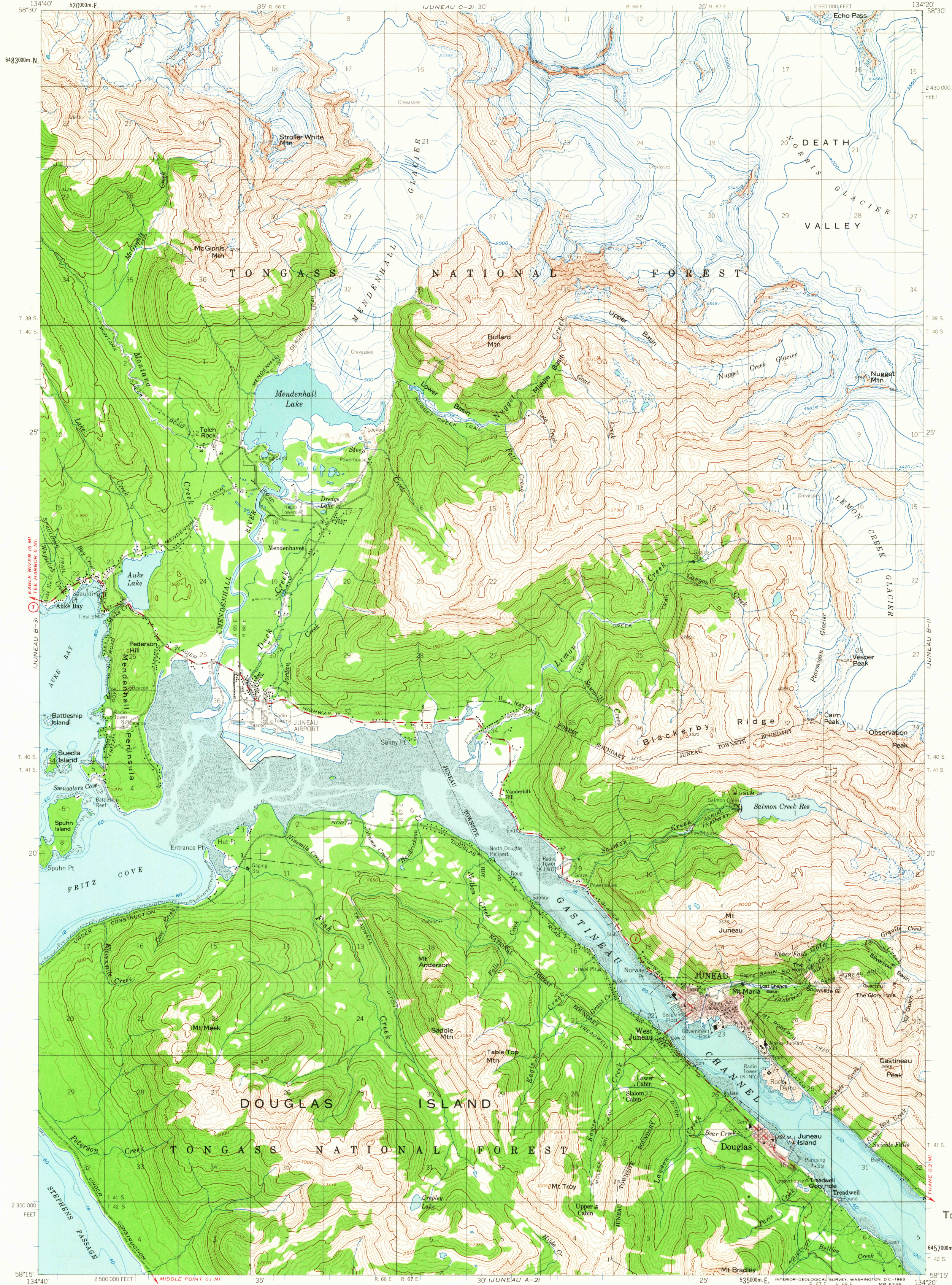


UNITED STATES  
DEPARTMENT OF THE INTERIOR  
GEOLOGICAL SURVEY

JUNEAU (B-2) QUADRANGLE  
ALASKA  
1:63,360 SERIES (TOPOGRAPHIC)



Mapped, edited, and published by the Geological Survey  
Control by USGS and USC&GS

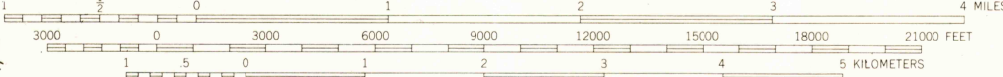
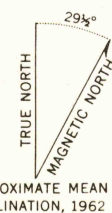
Topography by photogrammetric methods from aerial photographs  
taken 1948. Culture revised 1952. Map field checked 1962

Selected hydrographic data compiled from USC&GS  
Chart 8235 (1962). This information is not intended  
for navigational purposes

Universal Transverse Mercator projection, 1927 North American datum  
10,000-foot grid based on Alaska coordinate system, zone 1  
1000-meter Universal Transverse Mercator grid ticks,  
zone 8, shown in blue

Land lines represent unsurveyed and unmarked locations  
predetermined by the State of Alaska, Division of Lands  
Folio CR-12 Copper River Meridian

Red tint indicates areas in which only landmark buildings are shown



CONTOUR INTERVAL 100 FEET  
DATUM IS MEAN SEA LEVEL  
DEPTH CURVES IN FEET DATUM IS MEAN LOWER LOW WATER  
SHORELINE SHOWN REPRESENTS THE APPROXIMATE LINE OF MEAN HIGH WATER  
THE MEAN RANGE OF TIDE IS APPROXIMATELY 14 FEET

FOR SALE BY U.S. GEOLOGICAL SURVEY  
FAIRBANKS, ALASKA DENVER 25, COLORADO WASHINGTON 25, D. C.  
A FOLDER DESCRIBING TOPOGRAPHIC MAPS AND SYMBOLS IS AVAILABLE ON REQUEST



ROAD CLASSIFICATION  
Medium-duty ——— Light-duty ———  
Unimproved dirt ———  
State Route ———

JUNEAU (B-2) ALASKA  
N5815-W13420 1:63,360  
1962

USGS  
Historical File  
Topographic Division

U.S.G.S.  
FILE COPY  
TOPOGRAPHIC DIVISION

AUG 23 1963