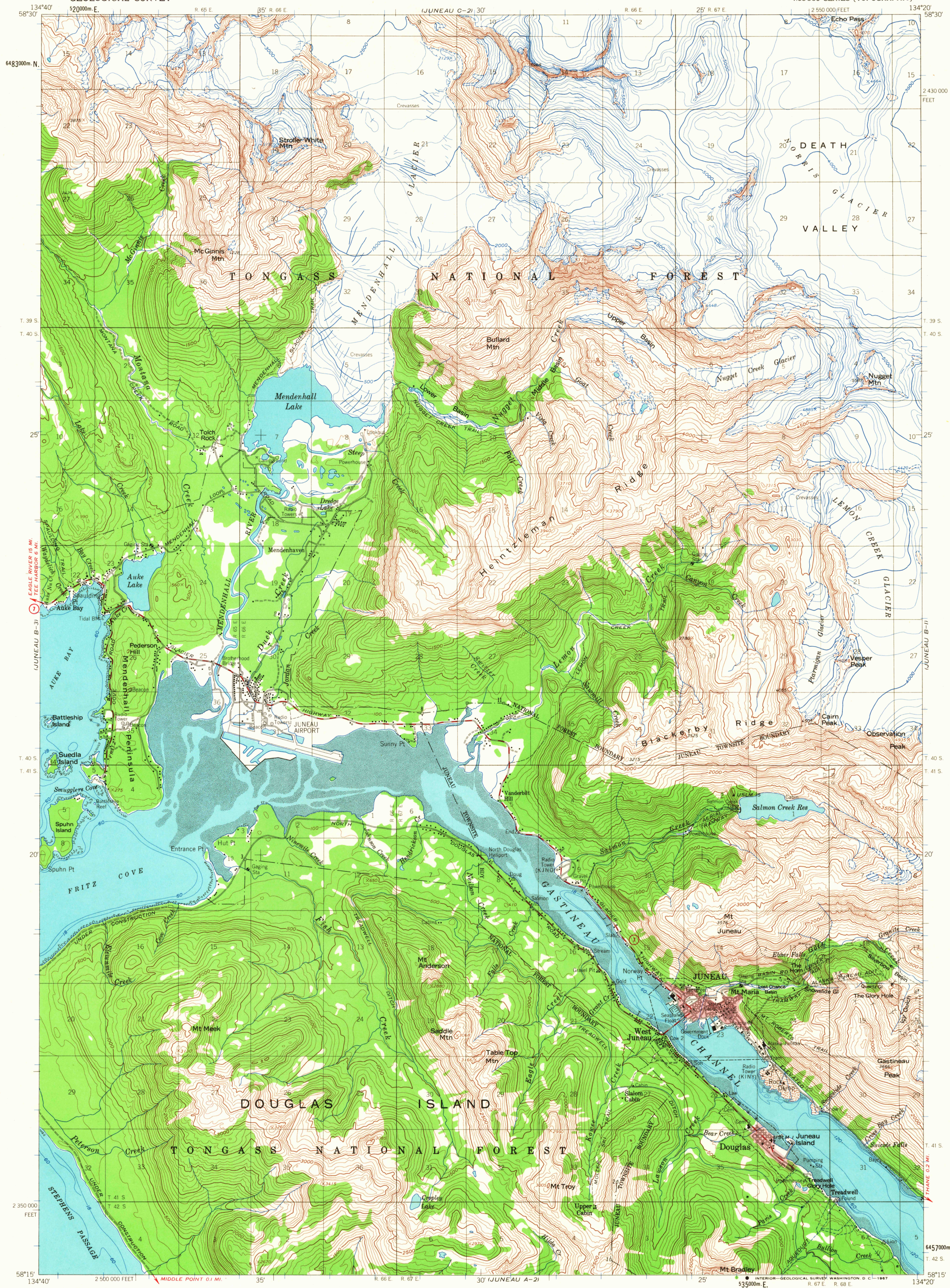


UNITED STATES
DEPARTMENT OF THE INTERIOR
GEOLOGICAL SURVEY

JUNEAU (B-2) QUADRANGLE
ALASKA
1:63,360 SERIES (TOPOGRAPHIC)



Mapped, edited, and published by the Geological Survey
Control by USGS and USC&GS

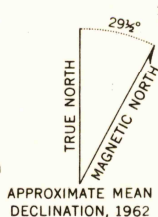
Topography by photogrammetric methods from aerial photographs
taken 1948. Culture revised 1962. Map field checked 1962

Selected hydrographic data compiled from USC&GS
Chart 8235 (1962). This information is not intended
for navigational purposes

Universal Transverse Mercator projection, 1927 North American datum
10,000-foot grid based on Alaska coordinate system, zone 1
1000-meter Universal Transverse Mercator grid ticks,
zone 8, shown in blue

Land lines represent unsurveyed and unmarked locations
predetermined by the State of Alaska, Division of Lands
Folio CR-12 Copper River Meridian

Red tint indicates areas in which only landmark buildings are shown



SCALE 1:63,360
0 1 2 3 4 MILES
0 3000 6000 9000 12000 15000 18000 21000 FEET
0 3 6 9 12 15 18 21 KILOMETERS

CONTOUR INTERVAL 100 FEET

DATUM IS MEAN SEA LEVEL
DEPTH CURVES IN FEET DATUM IS MEAN LOWER LOW WATER
SHORELINE SHOWN REPRESENTS THE APPROXIMATE LINE OF MEAN HIGH WATER
THE MEAN RANGE OF TIDE IS APPROXIMATELY 14 FEET

FOR SALE BY U.S. GEOLOGICAL SURVEY
FAIRBANKS, ALASKA 99701, DENVER, COLORADO 80225, OR WASHINGTON, D. C. 20241
A FOLDER DESCRIBING TOPOGRAPHIC MAPS AND SYMBOLS IS AVAILABLE ON REQUEST

U.S.G.S.
ALASKA
FIM 15
TOPOGRAPHIC DIVISION

ROAD CLASSIFICATION

Medium-duty ——— Light-duty ———
Unimproved dirt ———
State Route ———

JUNEAU (B-2), ALASKA
N5815-W13420/15X20

1962
MINOR REVISIONS 1966

USGS
Historical File
Topographic Division

8205
JUL 12 1967