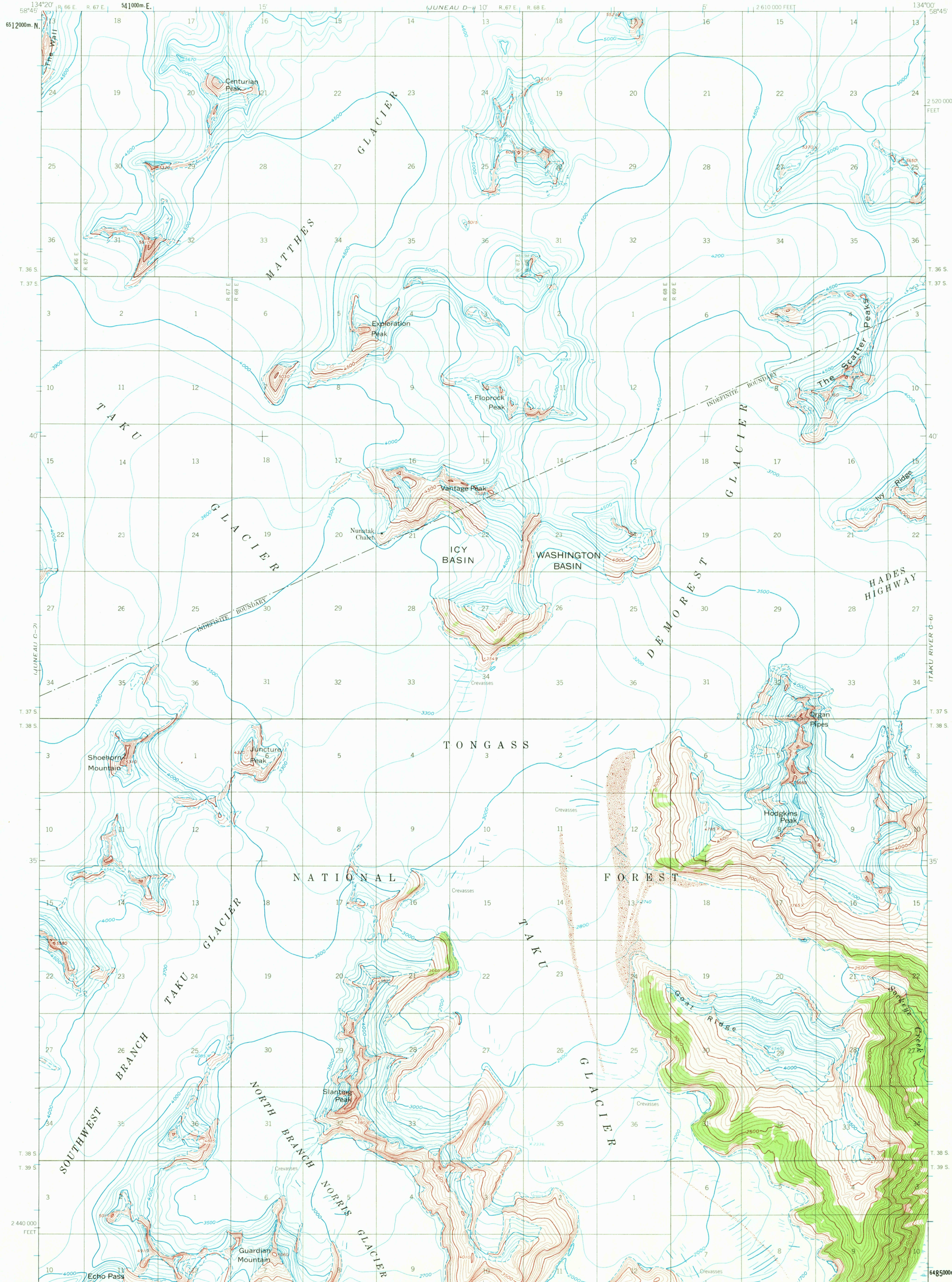
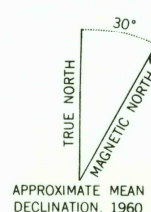


UNITED STATES  
DEPARTMENT OF THE INTERIOR  
GEOLOGICAL SURVEY

JUNEAU (C-1) QUADRANGLE  
ALASKA-CITY AND BOROUGH OF JUNEAU  
1:63 360 SERIES (TOPOGRAPHIC)



Mapped, edited, and published by the Geological Survey  
Control by USGS  
Topography by photogrammetric methods from aerial photographs  
taken 1948, field annotated 1960. Map not field checked  
Universal Transverse Mercator projection, 1927 North American datum  
10,000-foot grid based on Alaska coordinate system, zone 1  
1,000-meter Universal Transverse Mercator grid ticks,  
zone 8, shown in blue  
Land lines represent unsurveyed and unmarked locations  
predetermined by the State of Alaska, Division of Lands  
Folio CR 12, Copper River Meridian  
Swamps, as portrayed indicate only the wetter areas,  
usually of low relief, as interpreted from aerial photographs



SCALE 1:63 360  
CONTOUR INTERVAL 100 FEET  
DATUM IS MEAN SEA LEVEL



ROAD CLASSIFICATION  
No roads or trails in this area

FOR SALE BY U.S. GEOLOGICAL SURVEY  
FAIRBANKS, ALASKA 99701, DENVER, COLORADO 80225, OR WASHINGTON, D.C. 20242  
A FOLDER DESCRIBING TOPOGRAPHIC MAPS AND SYMBOLS IS AVAILABLE ON REQUEST

JUNEAU (C-1), ALASKA  
N5830-W13400/15X20  
1960  
MINOR REVISIONS 1971

USGS  
HISTORICAL FILE  
TOPOGRAPHIC DIVISION

NOV 3 1972

3485