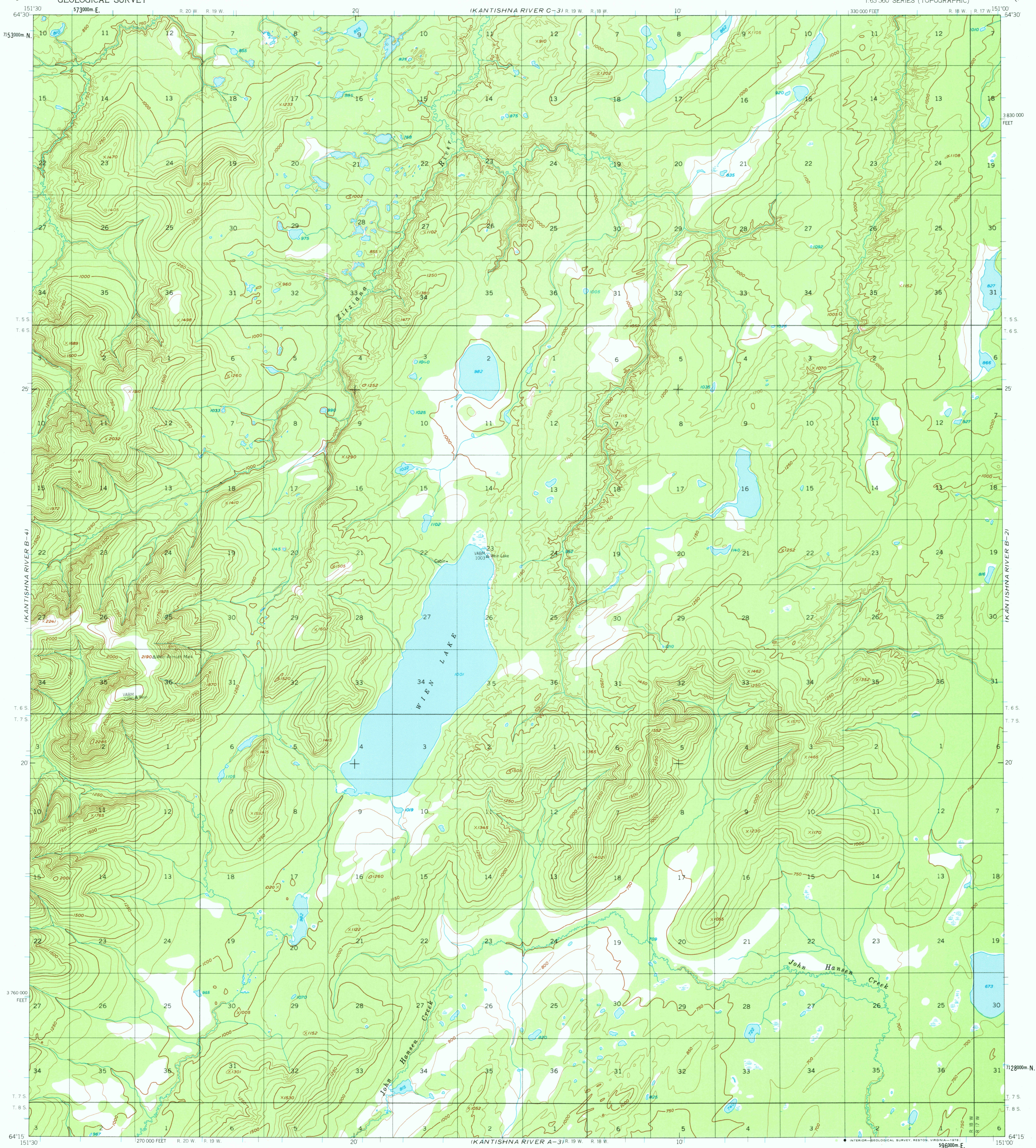
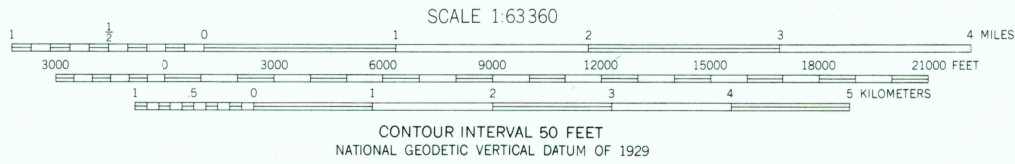
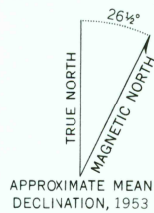


UNITED STATES
DEPARTMENT OF THE INTERIOR
GEOLOGICAL SURVEY

KANTISHNA RIVER (B-3) QUADRANGLE
ALASKA
1:63 360 SERIES (TOPOGRAPHIC)



Mapped, edited, and published by the Geological Survey
Control by USGS and USC&GS
Topography by photogrammetric methods from aerial photographs
taken 1952, field annotated 1953. Map not field checked
Universal Transverse Mercator projection, 1927 North American datum
10000-foot grid based on Alaska coordinate system, zone 4
1000-meter Universal Transverse Mercator grid ticks,
zone 5, shown in blue
Land lines represent unsurveyed and unmarked locations
predetermined by the Bureau of Land Management
Folio F-11, Fairbanks Meridian
Swamps, as portrayed, indicate only the wetter areas,
usually of low relief as interpreted from aerial photographs



FOR SALE BY U.S. GEOLOGICAL SURVEY
FAIRBANKS, ALASKA 99701, DENVER, COLORADO 80225, OR RESTON, VIRGINIA 22092
A FOLDER DESCRIBING TOPOGRAPHIC MAPS AND SYMBOLS IS AVAILABLE ON REQUEST



KANTISHNA RIVER (B-3), ALASKA
N6415-W15100/15X30

1953
MINOR REVISIONS 1972

USGS
Historical File
Topographic Division

FEB 2 1 1978 2000