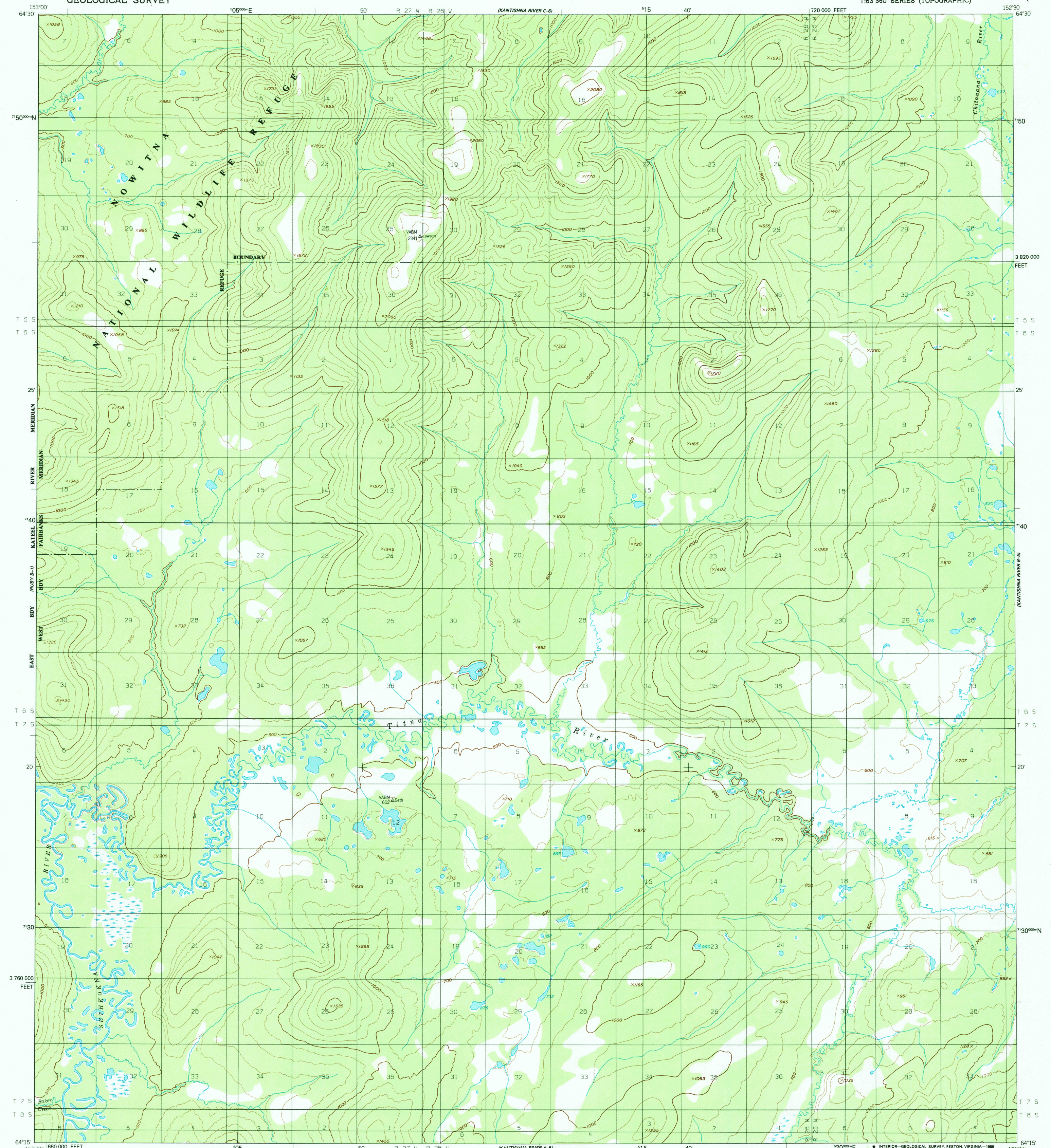
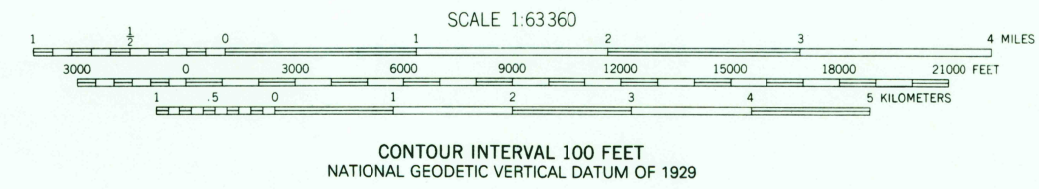
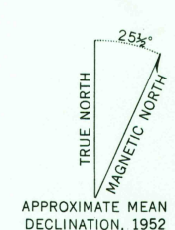


UNITED STATES
DEPARTMENT OF THE INTERIOR
GEOLOGICAL SURVEY

KANTISHNA RIVER (B-6) QUADRANGLE
ALASKA
1:63 360 SERIES (TOPOGRAPHIC)



Maped, edited, and published by the Geological Survey
Control by USGS
Topography by photogrammetric methods from aerial photographs
taken 1952. Map not field checked
Projection and 5000-meter grid
Universal Transverse Mercator, zone 5
20,000-foot grid ticks based on Alaska coordinate
system, zone 5. 1927 North American Datum
To place on the predicted North American Datum 1983 move
the projection lines 62 meters north and 122 meters east
Land lines represent unsurveyed and unmarked locations
predetermined by the Bureau of Land Management
Folio F-11, Fairbanks Meridian
Swamps, as portrayed, indicate only the wetter areas,
usually of low relief, as interpreted from aerial photographs
Federal reservation boundaries established by The Alaska National
Interest Lands Conservation Act, PL 96-487, Dec. 2, 1980, are
shown as compiled by the administering agencies
There may be private inholdings within the boundaries of
the National or State reservations shown on this map



CONTOUR INTERVAL 100 FEET
NATIONAL GEODETIC VERTICAL DATUM OF 1929

FOR SALE BY U.S. GEOLOGICAL SURVEY
FAIRBANKS, ALASKA 99701, DENVER, COLORADO 80225, OR RESTON, VIRGINIA 22092
A FOLDER DESCRIBING TOPOGRAPHIC MAPS AND SYMBOLS IS AVAILABLE ON REQUEST

ROAD CLASSIFICATION
No roads or trails in this area

QUADRANGLE LOCATION

KANTISHNA RIVER (B-6), ALASKA
N6415-W15230/15X30

USGS NMD HISTORICAL MAP

1952
MAJOR REVISION 1985

JUN 11 1986

REC'D FILE COPY