

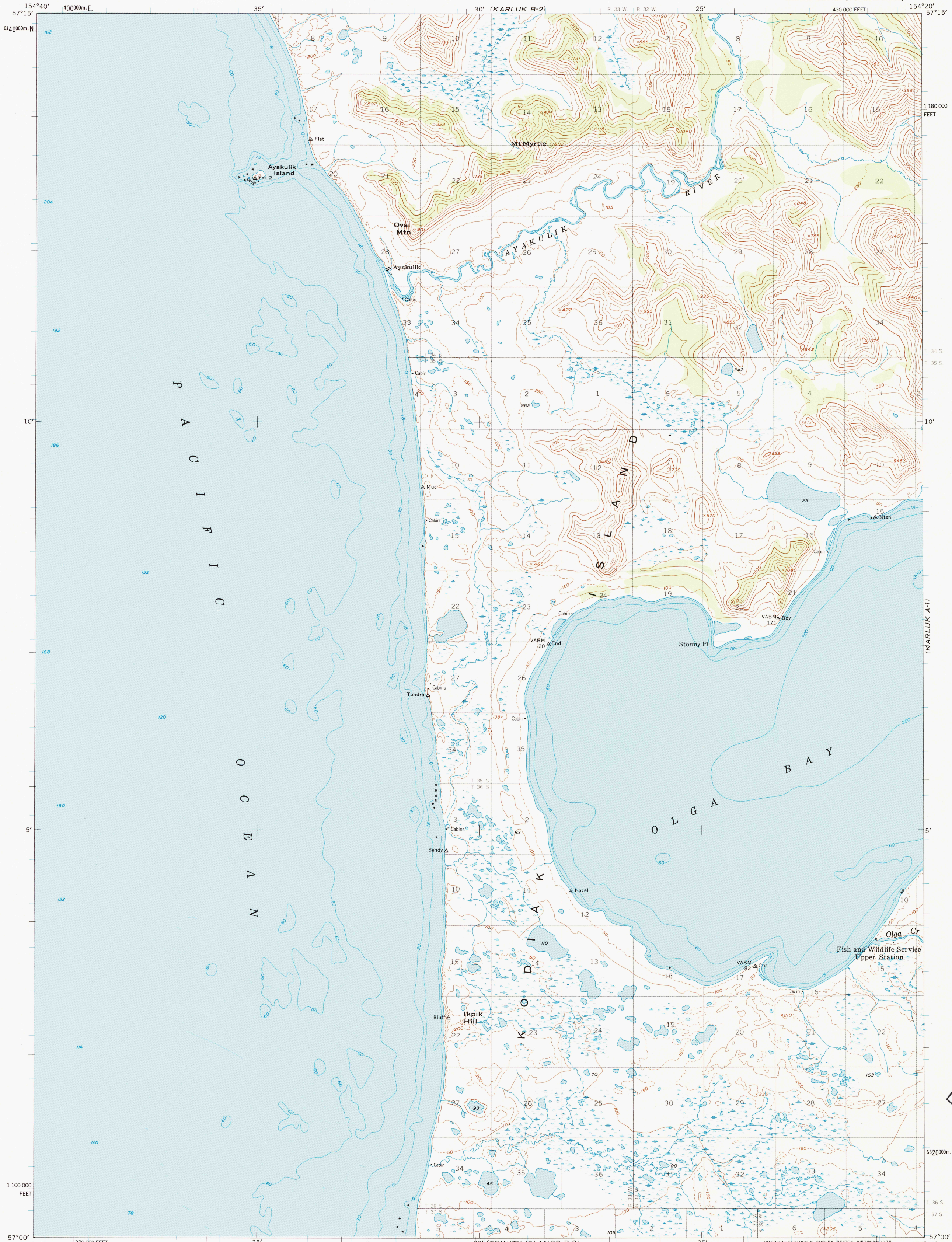
(KARLUK B-3)



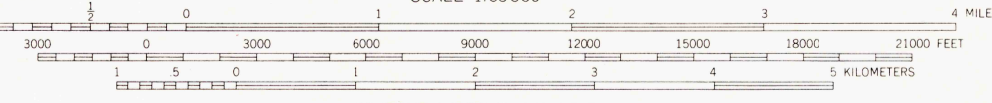
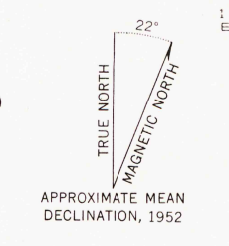
U.S. DEPARTMENT OF THE INTERIOR
U.S. GEOLOGICAL SURVEY

KARLUK (A-2) QUADRANGLE
ALASKA-KODIAK ISLAND BOROUGH
1:63 360 SERIES (TOPOGRAPHIC)

(KARLUK B-1)



Mapped, edited, and published by the Geological Survey
Control by USCGS and USCE
Topography by photogrammetric methods from aerial photographs taken 1952. Map not field checked
Selected hydrographic data compiled from USCGS Charts 8537 (1952) (1:81 529 scale), and 8540 (1947) (1:80 905 scale). This information is not intended for navigational purposes
Universal Transverse Mercator projection, 1927 North American datum
10,000-foot grid based on Alaska coordinate system, zone 5
1000-meter Universal Transverse Mercator grid ticks, zone 5, shown in blue
Land lines represent unsurveyed and unmarked locations predetermined by the Bureau of Land Management Folio S-24, Seward Meridian
Swamps, as portrayed, indicate only the wetter areas, usually of low relief, as interpreted from aerial photographs
Entire land area of Kodiak Island is within the Kodiak National Wildlife Refuge
Lake elevations are unchecked



ROAD CLASSIFICATION
No roads or trails in this area

KARLUK (A-2), ALASKA
N5700-W15420/15X20
1952
MINOR REVISIONS 1973

FOR SALE BY U.S. GEOLOGICAL SURVEY,
P.O. BOX 25286, DENVER, COLORADO 80225
A FOLDER DESCRIBING TOPOGRAPHIC MAPS AND SYMBOLS IS AVAILABLE ON REQUEST

U.S. GEOLOGICAL SURVEY
LIBRARY
APR 11 2002
RESTON, VA



91780607022766
ISBN 0-607-02276-0