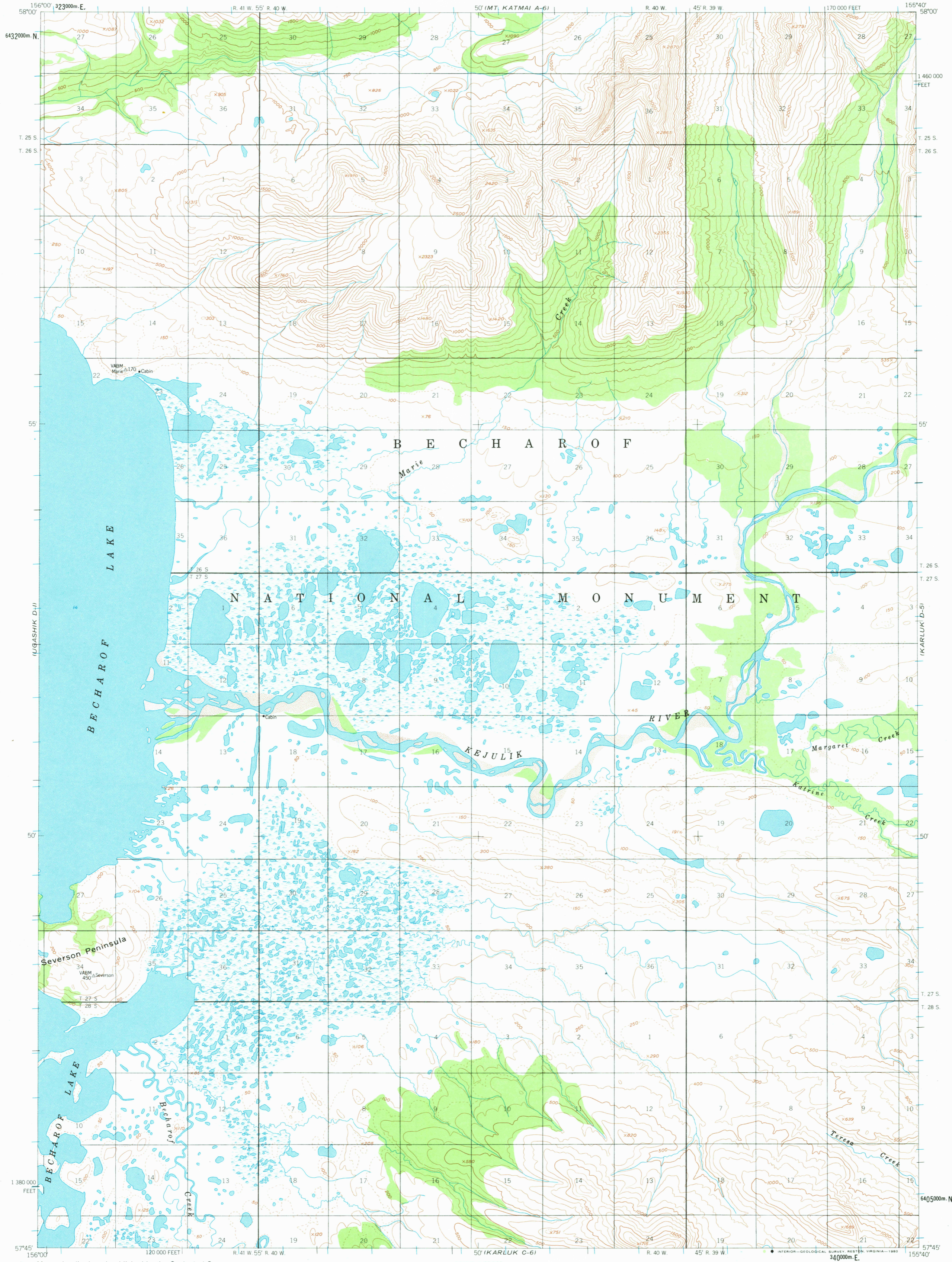


(NAKNEK A-1)

UNITED STATES
DEPARTMENT OF THE INTERIOR
GEOLOGICAL SURVEY

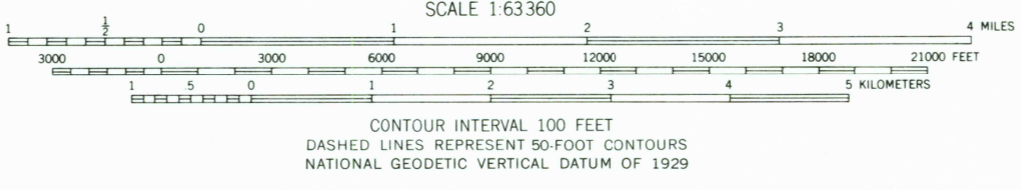
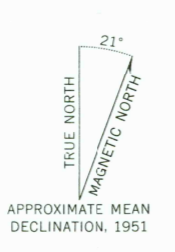
KARLUK (D-6) QUADRANGLE
ALASKA
1:63 360 SERIES (TOPOGRAPHIC)

(MT. KATMAI A-5)



(UGASHIK C-1)

Mapped, edited, and published by the Geological Survey
 Control by USCGS and USCE
 Topography by photogrammetric methods from aerial photographs taken 1951. Map not field checked
 Universal Transverse Mercator projection, 1927 North American datum
 10,000-foot grid based on Alaska coordinate system, zone 5
 1000-meter Universal Transverse Mercator grid ticks, zone 5, shown in blue
 Land lines represent unsurveyed and unmarked locations predetermined by the Bureau of Land Management Folio S-22, Seward Meridian
 Swamps, as portrayed, indicate only the wetter areas, usually of low relief, as interpreted from aerial photographs
 To place on the predicted North American Datum 1983 move the projection lines 81 meters north and 135 meters east
 There may be private inholdings within the boundaries of the Becharof National Monument shown on this map



ROAD CLASSIFICATION
No roads or trails in this area

FOR SALE BY U. S. GEOLOGICAL SURVEY
FAIRBANKS, ALASKA 99701, DENVER, COLORADO 80225, OR RESTON, VIRGINIA 22092
A FOLDER DESCRIBING TOPOGRAPHIC MAPS AND SYMBOLS IS AVAILABLE ON REQUEST

KARLUK (D-6), ALASKA
N5745-W15540/15X20
1951
MINOR REVISIONS 1973

USGS
Historical File
Topographic Division

1000
FEB 3 1981