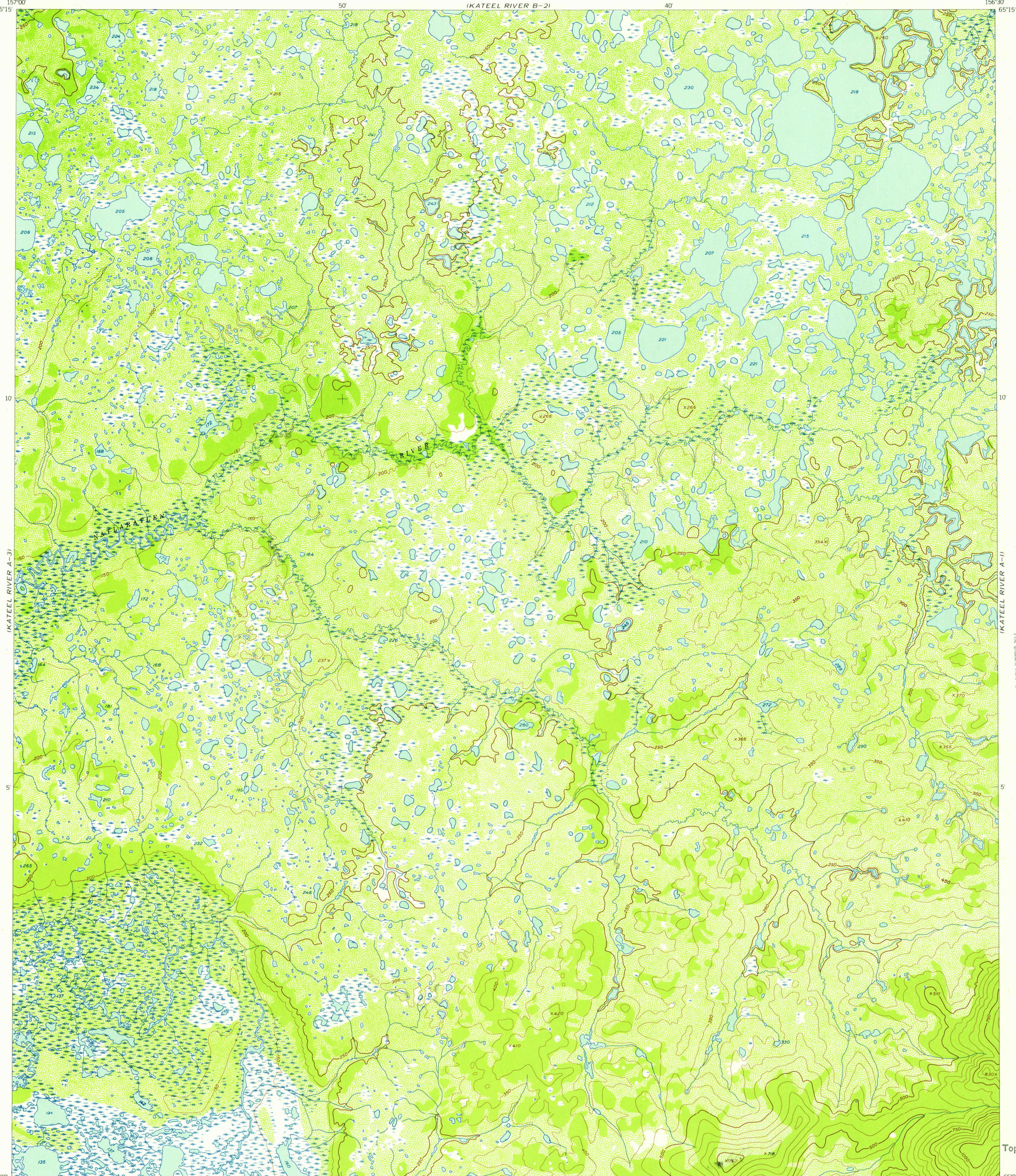
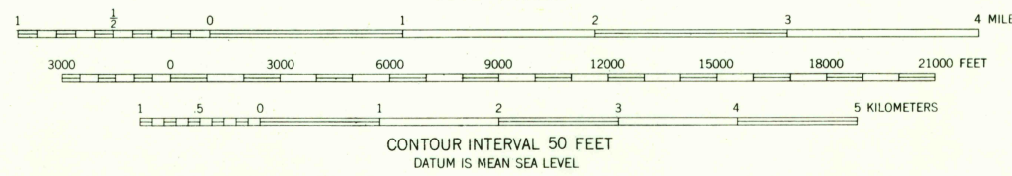
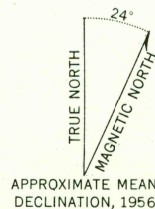


UNITED STATES
DEPARTMENT OF THE INTERIOR
GEOLOGICAL SURVEY

KATEEL RIVER (A-2) QUADRANGLE
ALASKA—FOURTH JUDICIAL DIVISION
1:63 360 SERIES (TOPOGRAPHIC)



Mapped, edited, and published by the Geological Survey
Control by USCE
Topography from aerial photographs by multiplex methods 1956
Aerial photographs taken 1952. Map not field checked
Universal Transverse Mercator projection, zone 4
1927 North American datum
Unchecked elevations are shown in brown and blue



U.S.G.S.
FILE COPY
TOPOGRAPHIC DIVISION

KATEEL RIVER (A-2), ALASKA
N6500—W15630/15X30
1952

ROAD CLASSIFICATION
No roads or trails in this area

FOR SALE BY U.S. GEOLOGICAL SURVEY
FAIRBANKS, ALASKA DENVER 2, COLORADO WASHINGTON 25, D.C.
A FOLDER DESCRIBING TOPOGRAPHIC MAPS AND SYMBOLS IS AVAILABLE ON REQUEST

U.S.G.S.
FILE COPY
TOPOGRAPHIC DIVISION

USGS
Historical File
Topographic Division

OCT 24 1957
2100