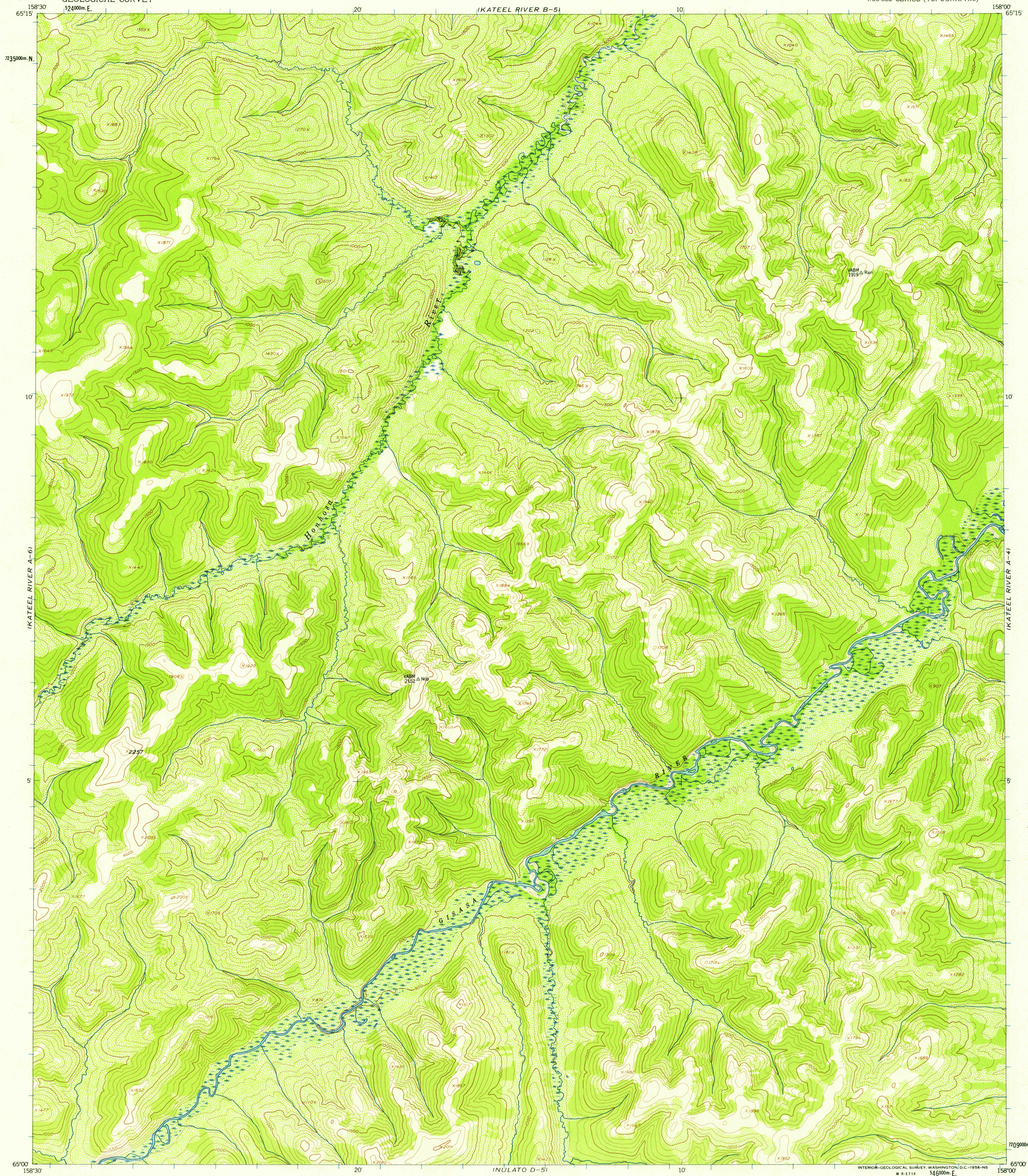
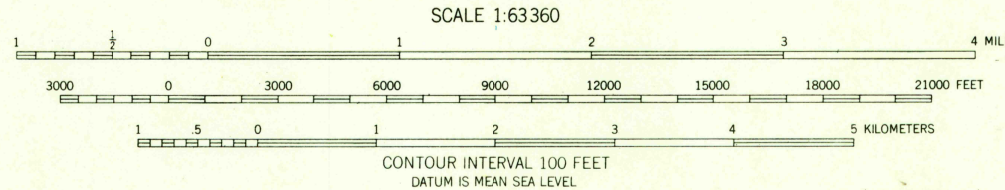
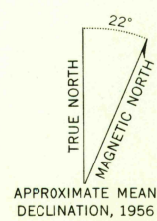


UNITED STATES  
DEPARTMENT OF THE INTERIOR  
GEOLOGICAL SURVEY

KATEEL RIVER (A-5) QUADRANGLE  
ALASKA-FOURTH JUDICIAL DIVISION  
1:63 360 SERIES (TOPOGRAPHIC)



Mapped, edited, and published by the Geological Survey  
Control by USC&GS and USCE  
Topography from aerial photographs by multiplex methods 1956  
Aerial photographs taken 1952. Map not field checked  
Universal Transverse Mercator projection,  
1927 North American datum  
1000-meter Universal Transverse Mercator grid ticks,  
zone 4, shown in blue  
Unchecked elevations are shown in brown



FOR SALE BY U.S. GEOLOGICAL SURVEY  
FAIRBANKS, ALASKA DENVER 2, COLORADO WASHINGTON 25, D.C.  
A FOLDER DESCRIBING TOPOGRAPHIC MAPS AND SYMBOLS IS AVAILABLE ON REQUEST

U.S.G.S.  
FILE COPY  
TOPOGRAPHIC DIVISION

ROAD CLASSIFICATION  
No roads or trails in this area

KATEEL RIVER (A-5), ALASKA  
N6500-W15800/15X30  
1952

Historical File  
Topographic Division

MAY 23 1958  
1770