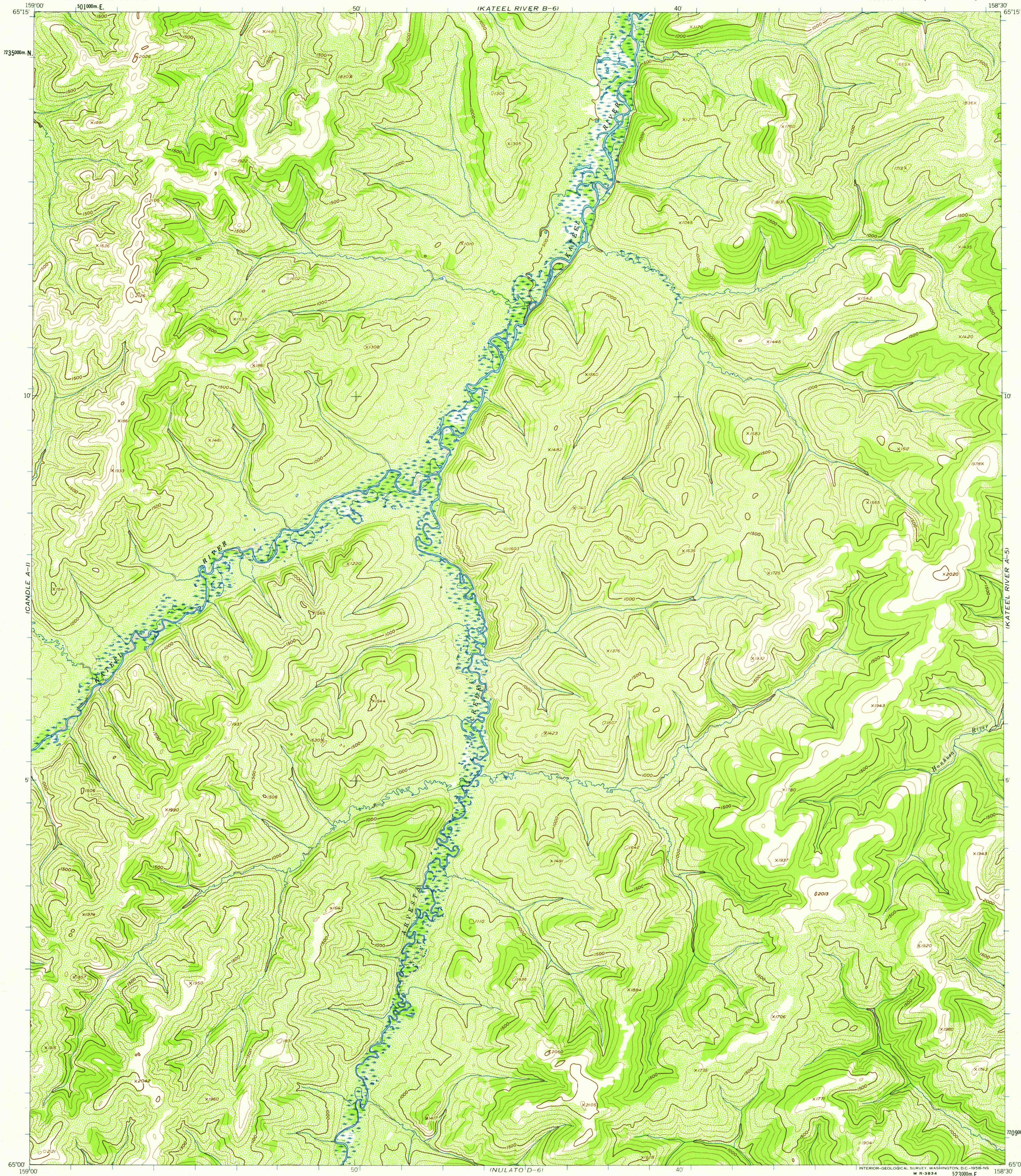


UNITED STATES
DEPARTMENT OF THE INTERIOR
GEOLOGICAL SURVEY

KATEEL RIVER (A-6) QUADRANGLE
ALASKA—FOURTH JUDICIAL DIVISION
1:63 360 SERIES (TOPOGRAPHIC)



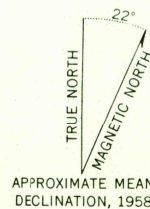
Mapped, edited, and published by the Geological Survey

Control by USCE

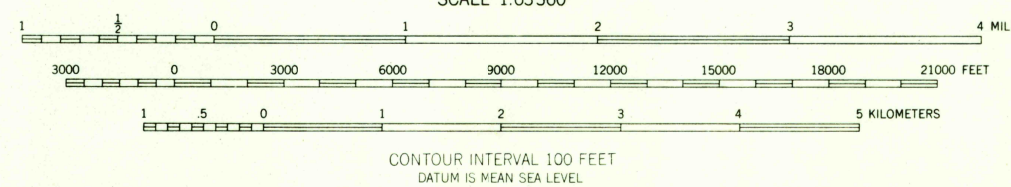
Topography from aerial photographs by photogrammetric methods 1956. Aerial photographs taken 1952 and 1955, field annotated 1955. Map not field checked

Universal Transverse Mercator projection
1927 North American datum
1000-meter Universal Transverse Mercator grid ticks, zone 4, shown in blue

Unchecked elevations are shown in brown



APPROXIMATE MEAN
DECLINATION, 1958



FOR SALE BY U.S. GEOLOGICAL SURVEY
FAIRBANKS, ALASKA DENVER 2, COLORADO WASHINGTON 25, D.C.
A FOLDER DESCRIBING TOPOGRAPHIC MAPS AND SYMBOLS IS AVAILABLE ON REQUEST

U.S.G.S.
FILE COPY
TOPOGRAPHIC DIVISION

ROAD CLASSIFICATION
No roads or trails in this area

USGS
Historical File
Topographic Division

KATEEL RIVER (A-6), ALASKA
N6500—W15830/15X30

1955



QUADRANGLE LOCATION

OCT - 9 1958
1935