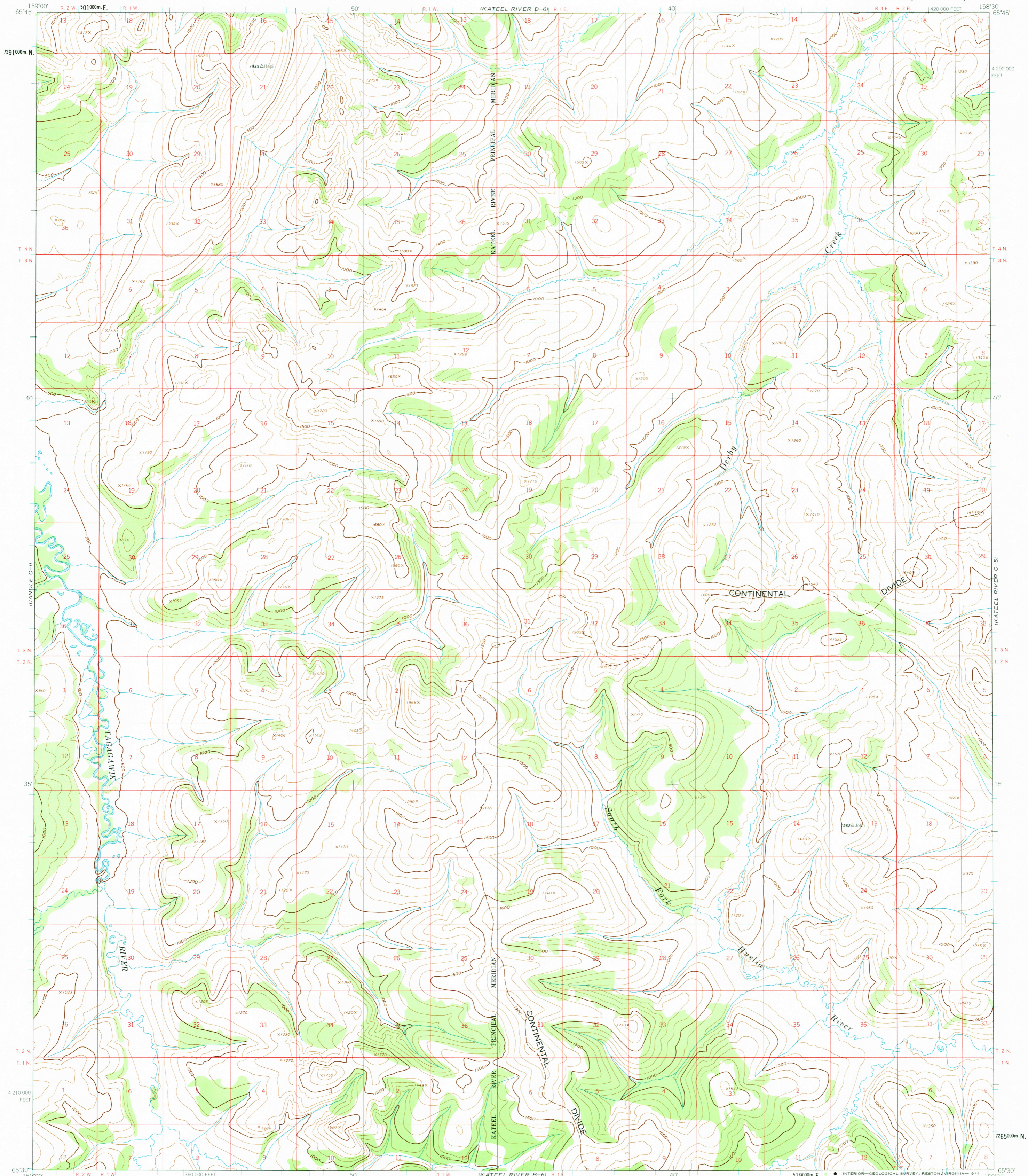


(CANDLE D-V)

UNITED STATES  
DEPARTMENT OF THE INTERIOR  
GEOLOGICAL SURVEY

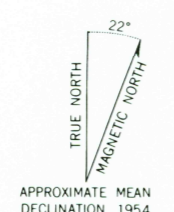
KATEEL RIVER (C-6) QUADRANGLE  
ALASKA  
1:63 360 SERIES (TOPOGRAPHIC)

KATEEL RIVER D-9



(CANDLE B-II)

Mapped, edited, and published by the Geological Survey  
Control by USGS, USC&CS, and USCE  
Topography by photogrammetric methods from aerial photographs  
taken 1952, 1954, and 1955, field annotated 1954. Map not field checked  
Universal Transverse Mercator projection, 1927 North American datum  
10,000-foot grid based on Alaska coordinate system, zone 6  
1000-meter Universal Transverse Mercator grid ticks,  
zone 4, shown in blue  
Land lines represent unsurveyed and unmarked locations  
determined by the Bureau of Land Management  
Folios K-7 and K-8, Kateel River Meridian



ROAD CLASSIFICATION  
No roads or trails in this area



KATEEL RIVER (C-6), ALASKA  
N6530-W15830/15X30

2800

FOR SALE BY U.S. GEOLOGICAL SURVEY  
FAIRBANKS, ALASKA 99701, DENVER, COLORADO 80225, OR RESTON, VIRGINIA 22092  
A FOLDER DESCRIBING TOPOGRAPHIC MAPS AND SYMBOLS IS AVAILABLE ON REQUEST

USGS  
Historical File  
Topographic Division

1954

NOV 0 4 1974