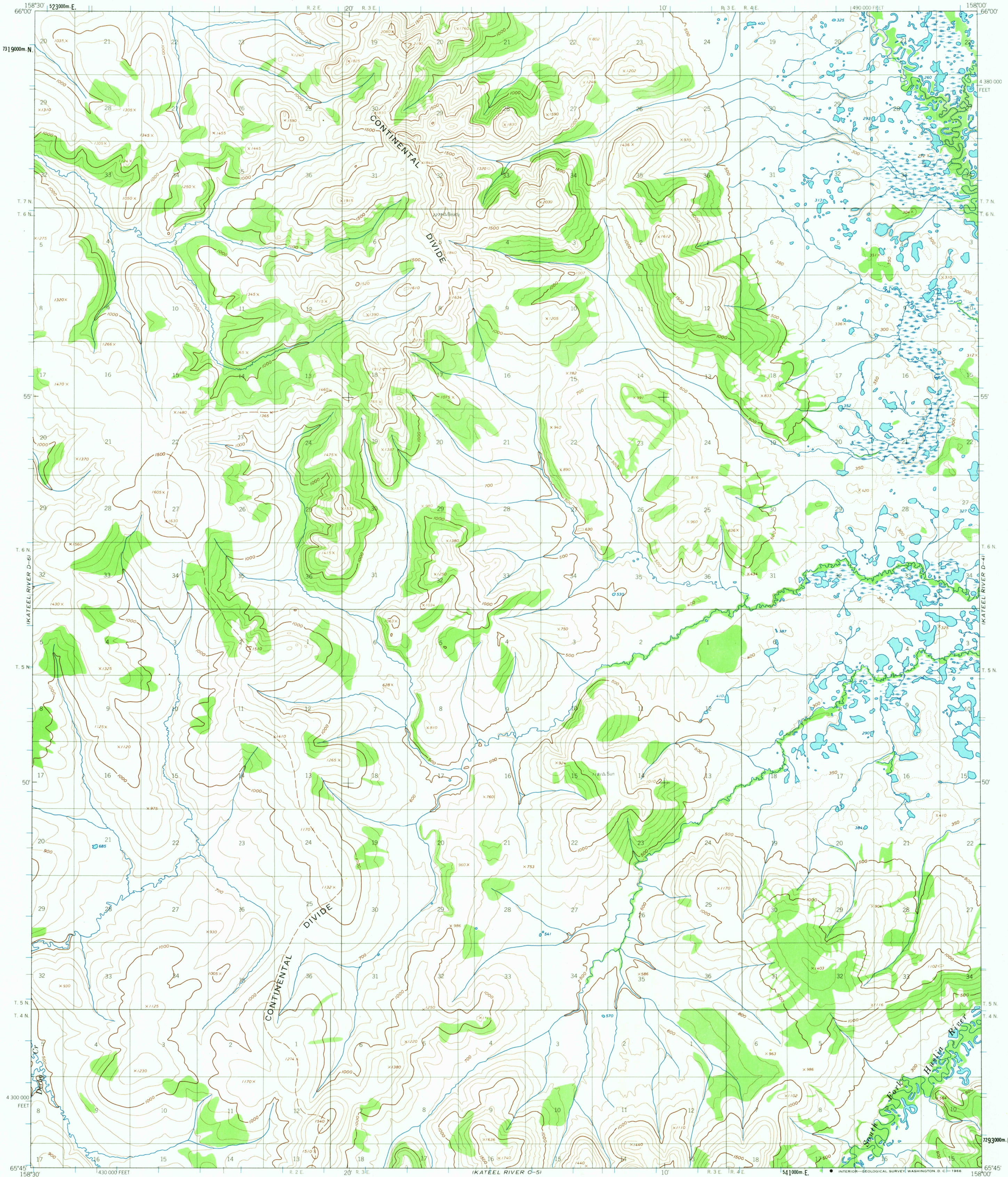


UNITED STATES
DEPARTMENT OF THE INTERIOR
GEOLOGICAL SURVEY

KATEEL RIVER (D-5) QUADRANGLE
ALASKA
1:63 360 SERIES (TOPOGRAPHIC)



Mapped, edited, and published by the Geological Survey

Control by USGS, USC&GS, and USCE

Topography by photogrammetric methods from aerial photographs taken 1952 and 1955, field annotated 1954. Map not field checked

Universal Transverse Mercator projection, 1927 North American datum

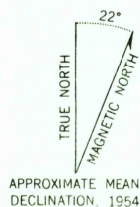
10,000-foot grid based on Alaska coordinate system, zone 6

1000-meter Universal Transverse Mercator grid ticks, zone 4, shown in blue

Land lines represent unsurveyed and unmarked locations predetermined by the Bureau of Land Management

Folio K-8 Kateel River Meridian

Swamps, as portrayed, indicate only the wetter areas, usually of low relief, as interpreted from aerial photographs



APPROXIMATE MEAN
DECLINATION, 1954



SCALE 1:63 360

CONTOUR INTERVAL 100 FEET

DOTTED LINES REPRESENT 50-FOOT CONTOURS

DATUM IS MEAN SEA LEVEL

FOR SALE BY U.S. GEOLOGICAL SURVEY

FAIRBANKS, ALASKA 99701, DENVER, COLORADO 80225, OR WASHINGTON, D. C. 20242

A FOLDER DESCRIBING TOPOGRAPHIC MAPS AND SYMBOLS IS AVAILABLE ON REQUEST



QUADRANGLE LOCATION

ROAD CLASSIFICATION
USGS No roads or trails in this area
Historical File
Topographic Division

KATEEL RIVER (D-5), ALASKA
N6545-W15800/15X30

1954

U.S.G.S.
FILE COPY
TOPOGRAPHIC DIVISION

2130
APR 22 1966