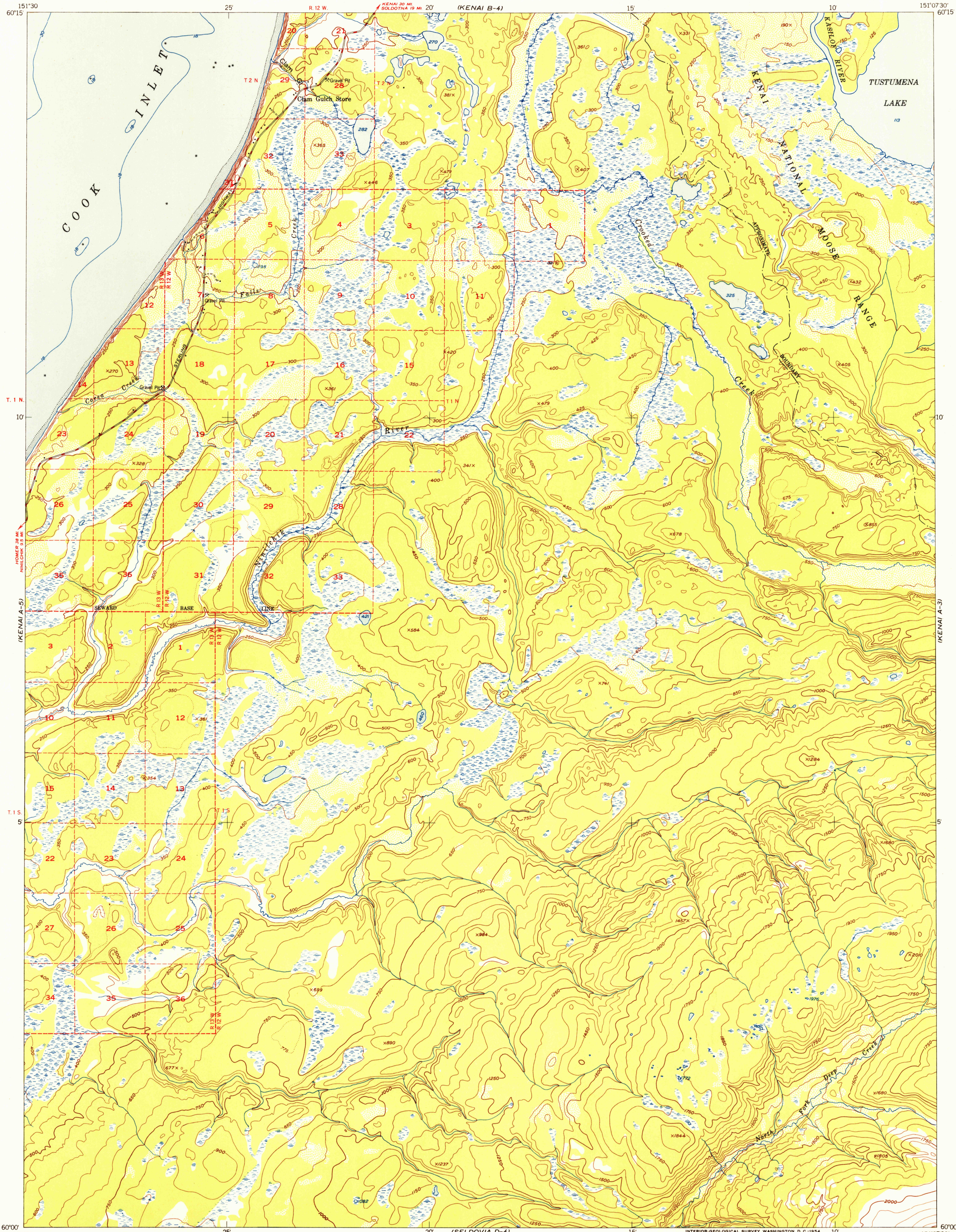


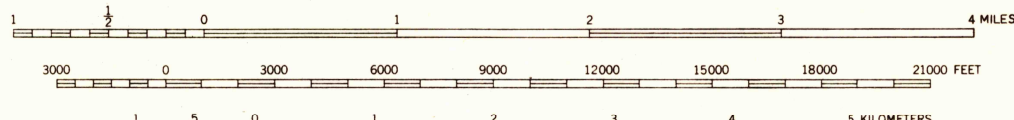
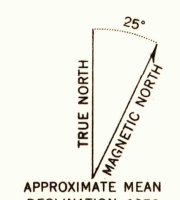
FILE COPY
USGS
Historical File
Topographic Division

FILE COPY
USGS
Historical File
Topographic Division

MAY 21 1954



Mapped, edited, and published by the Geological Survey
Control by USC&GS and USCE
Hydrography compiled from USC&GS charts H3196C,
8553 (1:194 154 scale), and 8554 (1:200 000 scale)
Topography from aerial photographs by multiplex methods 1952
Aerial photographs taken 1950
Universal Transverse Mercator projection, zone 5
1927 North American datum
Dashed land lines indicate approximate locations
Unchecked elevations are shown in brown and blue



CONTOUR INTERVAL 50 FEET
DOTTED LINES REPRESENT HALF-INTERVAL CONTOURS
DATUM IS MEAN SEA LEVEL
DEPTH CURVES IN FEET—DATUM IS MEAN LOWER LOW WATER
SHORELINE SHOWN REPRESENTS THE APPROXIMATE LINE OF MEAN HIGH WATER
THE AVERAGE RANGE OF TIDE IS APPROXIMATELY 17 FEET



ROAD CLASSIFICATION

ALL WEATHER ROADS	DRY WEATHER ROADS
Hard-surface.....	None Improved dirt..... None
Other.....	None Unimproved dirt.....
Trails.....	

KENAI (A-4), ALASKA
N6000—W15107.5/15X22.5

FOR SALE BY U. S. GEOLOGICAL SURVEY, FEDERAL CENTER, DENVER, COLORADO OR WASHINGTON 25, D. C.
A FOLDER DESCRIBING TOPOGRAPHIC MAPS AND SYMBOLS IS AVAILABLE ON REQUEST

1952