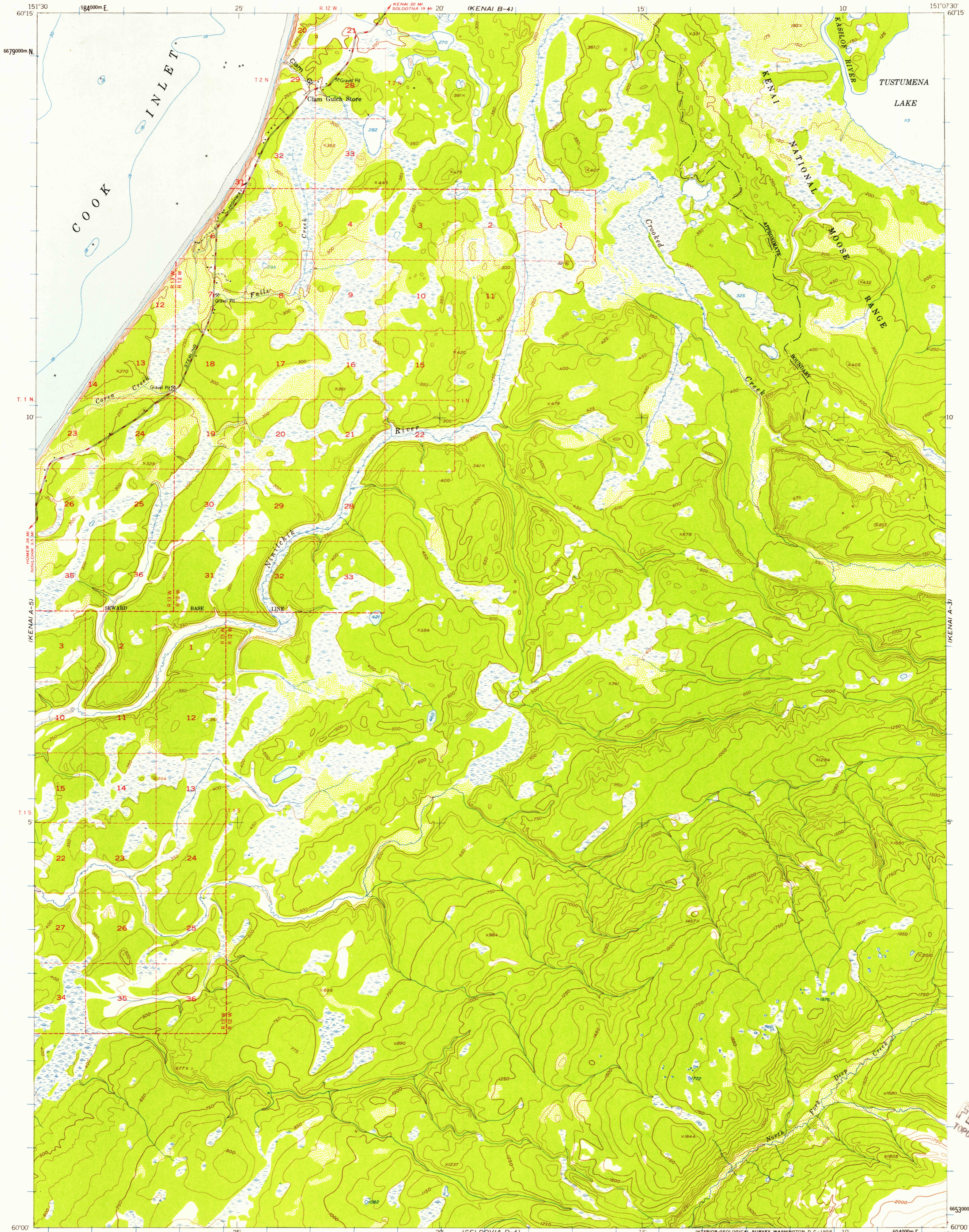


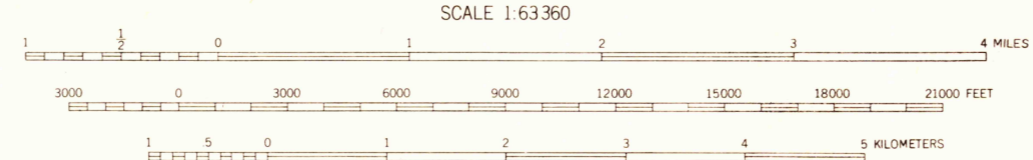
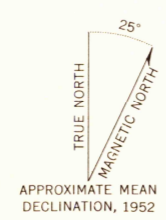
(KENAI B-3)



U.S.G.S.
FILE COPY
TOPOGRAPHIC DIVISION

U.S.G.S.
Historical File
Topographic Division

Mapped, edited, and published by the Geological Survey
Control by USC&GS and USCE
Hydrography compiled from USC&GS charts H3196C,
8553 (1:194 154 scale), and 8554 (1:200 000 scale)
Topography from aerial photographs by multiplex methods 1952
Aerial photographs taken 1950
Universal Transverse Mercator projection, zone 5
1927 North American datum
Dashed land lines indicate approximate locations
Unchecked elevations are shown in brown and blue
1000-meter Universal Transverse Mercator grid ticks,
zone 5, shown in blue



CONTOUR INTERVAL 50 FEET
DOTTED LINES REPRESENT HALF-INTERVAL CONTOURS
DATUM IS MEAN SEA LEVEL
DEPTH CURVES IN FEET—DATUM IS MEAN LOWER LOW WATER
SHORELINE SHOWN REPRESENTS THE APPROXIMATE LINE OF MEAN HIGH WATER
THE AVERAGE RANGE OF TIDE IS APPROXIMATELY 17 FEET



ROAD CLASSIFICATION

ALL WEATHER ROADS	DRY WEATHER ROADS
Hard surface	None
Improved dirt	None
Other	Unimproved dirt
Trails	

KENAI (A-4), ALASKA
N6000—W15107.5/15X22.5
1952

FOR SALE BY U. S. GEOLOGICAL SURVEY
DENVER 2, COLORADO WASHINGTON 25, D. C.
A FOLDER DESCRIBING TOPOGRAPHIC MAPS AND SYMBOLS IS AVAILABLE ON REQUEST

FEB 11 1958

3940