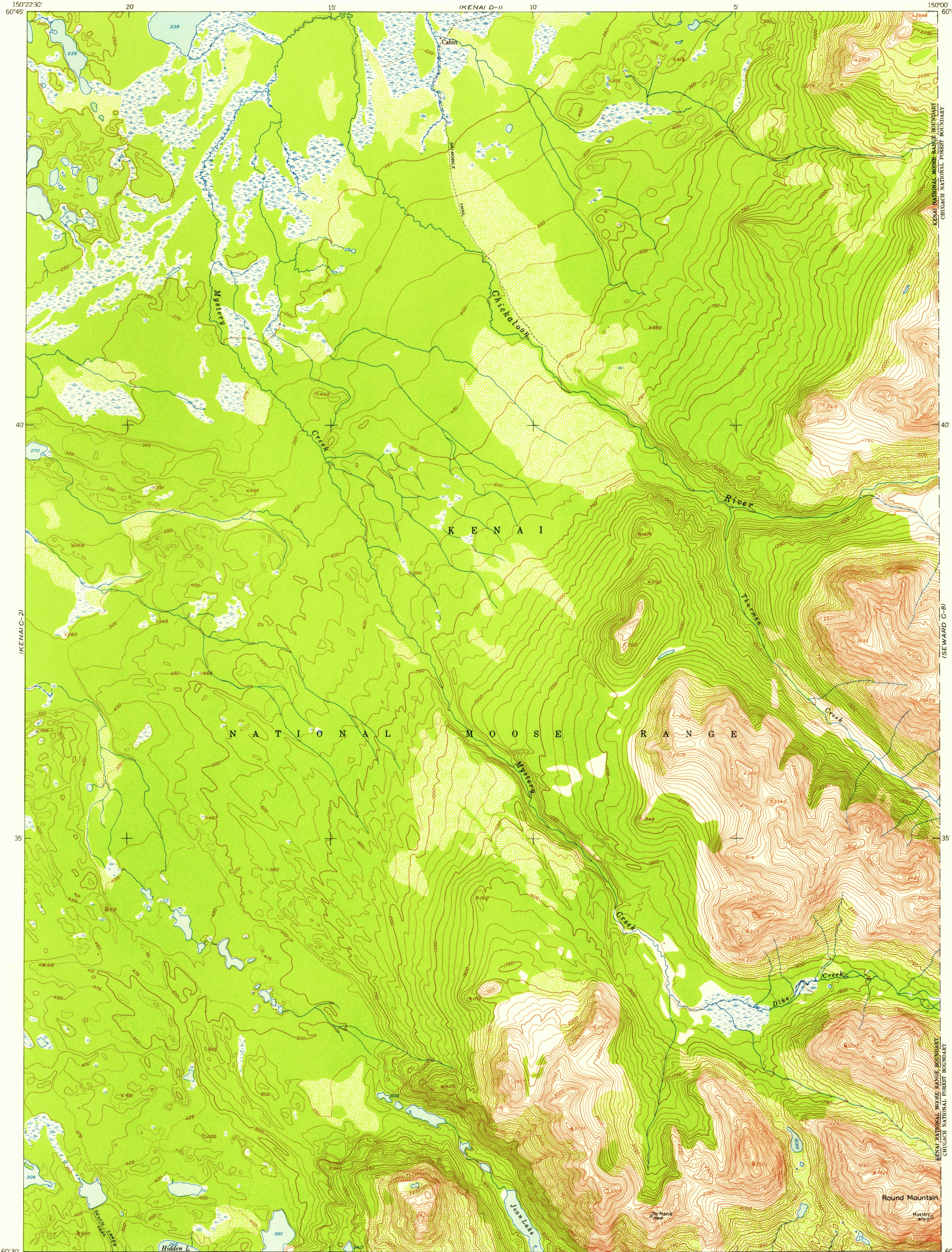
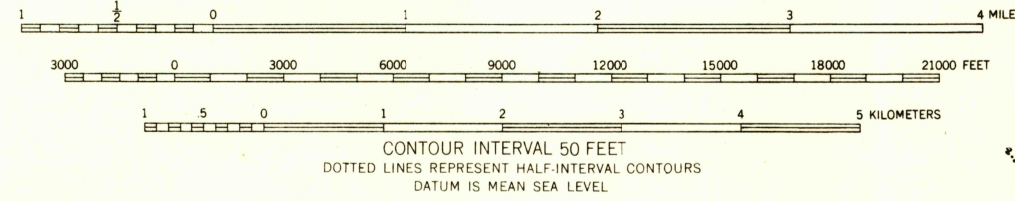
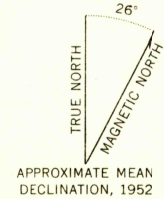


FILE COPY
Geological Survey



Maped, edited, and published by the Geological Survey
Control by USC&GS and USCE
Topography from aerial photographs by multiplex methods 1952
Aerial photographs taken 1950
Universal Transverse Mercator projection, zone 5
1927 North American datum
Unchecked elevations are shown in brown and blue



ROAD CLASSIFICATION

ALL WEATHER ROADS	DRY WEATHER ROADS
Hard-surface.....None	Improved dirt.....None
Other.....None	Unimproved dirt.....None
Trails.....	

KENAI (C-1), ALASKA
N6030—W15000/15X22.5
1952

FOR SALE BY U. S. GEOLOGICAL SURVEY, FEDERAL CENTER, DENVER, COLORADO OR WASHINGTON 25, D. C.
A FOLDER DESCRIBING TOPOGRAPHIC MAPS AND SYMBOLS IS AVAILABLE ON REQUEST

Historical File
Topographic Division

FILE COPY
Geological Survey

JUN 2 1954
2100