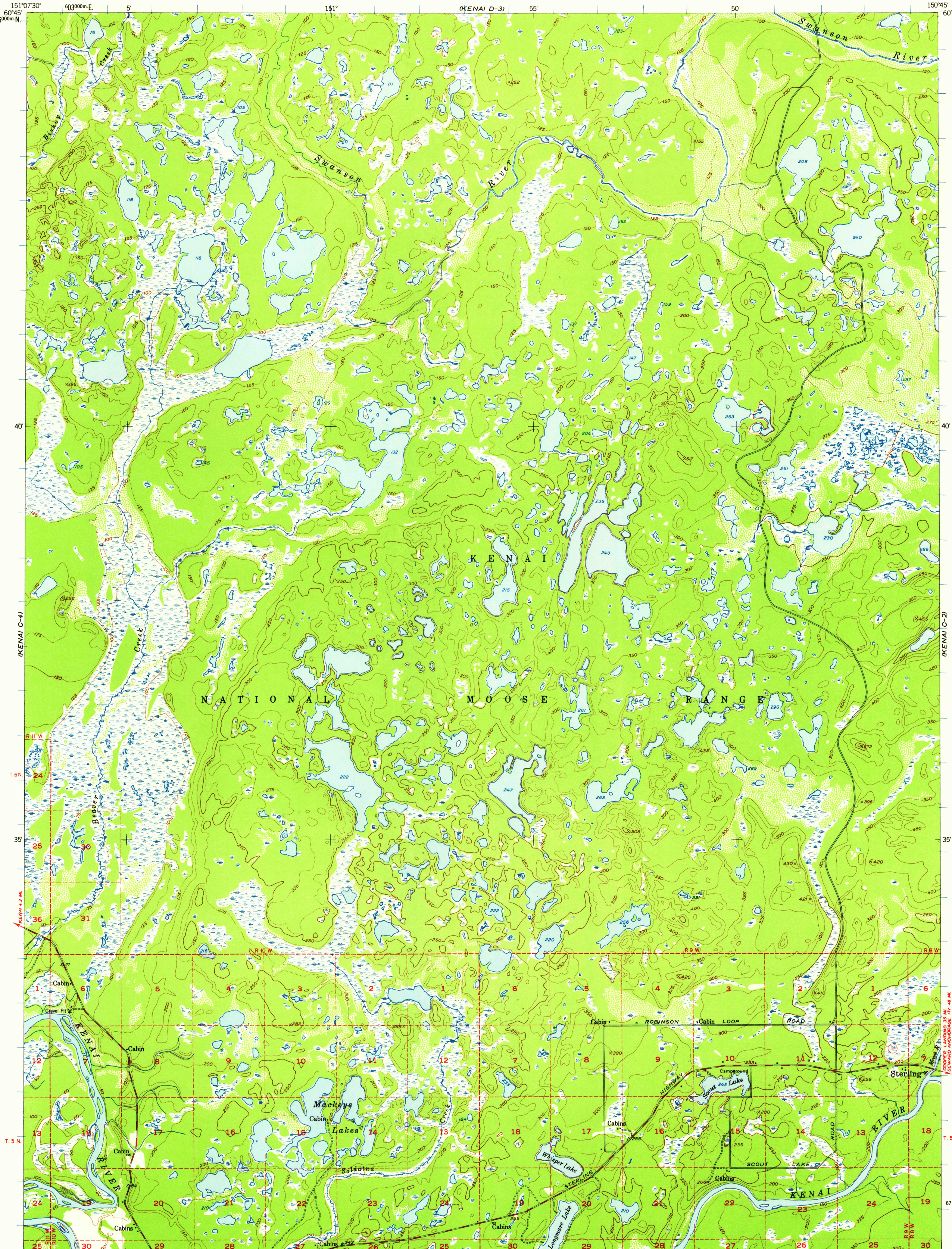


UNITED STATES  
DEPARTMENT OF THE INTERIOR  
GEOLOGICAL SURVEY

KENAI (C-3) QUADRANGLE  
ALASKA—THIRD JUDICIAL DIVISION  
1:63 360 SERIES (TOPOGRAPHIC)



Maped, edited, and published by the Geological Survey  
Control by USCE  
Topography from aerial photographs by multiplex methods 1952  
Aerial photographs taken 1950  
Universal Transverse Mercator projection, zone 5  
1927 North American datum  
Dashed land lines indicate approximate locations  
Unchecked elevations are shown in brown and blue  
1000-meter Universal Transverse Mercator grid ticks,  
zone 5, shown in blue

SCALE 1:63 360  
0 1 2 3 4 MILES  
0 3000 6000 9000 12000 15000 18000 21000 FEET  
0 1 2 3 4 5 KILOMETERS

CONTOUR INTERVAL 50 FEET  
DOTTED LINES REPRESENT HALF-INTERVAL CONTOURS  
DATUM IS MEAN SEA LEVEL

TRUE NORTH  
254°  
APPROXIMATE MEAN  
MAGNETIC NORTH  
1952

ROAD CLASSIFICATION  
Medium-duty ——— Light-duty ———  
Unimproved dirt ———  
State Route ○

FOR SALE BY U. S. GEOLOGICAL SURVEY  
FAIRBANKS, ALASKA DENVER 25, COLORADO WASHINGTON 25, D. C.  
A FOLDER DESCRIBING TOPOGRAPHIC MAPS AND SYMBOLS IS AVAILABLE ON REQUEST

KENAI (C-3), ALASKA  
N6030—W15045/15X22.5  
1950

U.S.G.S.  
FILE COPY  
TOPOGRAPHIC DIVISION

USGS  
Historical File  
Topographic Division

2975