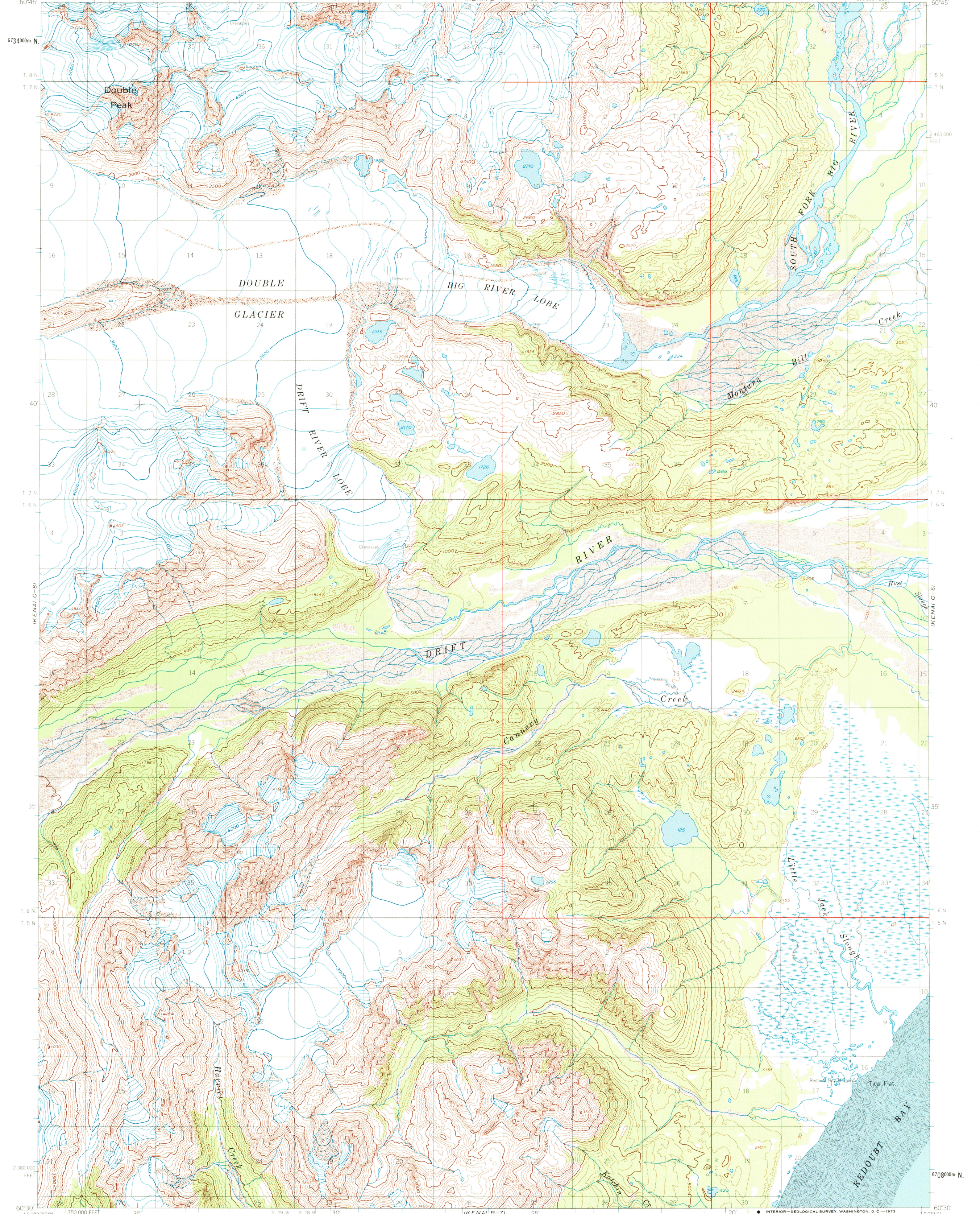
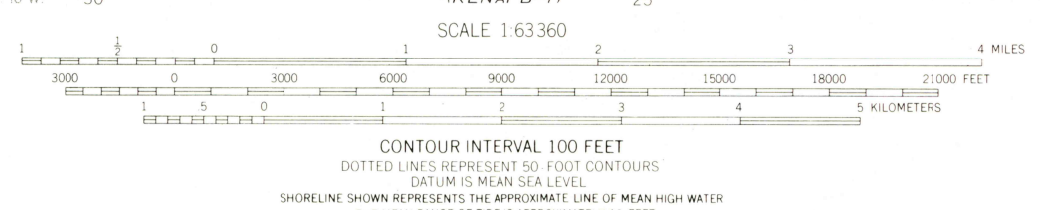
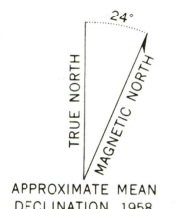


KENAI D-89

KENAI D-60



Map edited and published by the Geological Survey  
Control by USGS and USC&GS  
Topography by photogrammetric methods from aerial photographs taken 1954 and 1957, field annotated 1958. Map not field checked  
Universal Transverse Mercator projection, 1927 North American datum  
10,000-foot grid based on Alaska coordinate system, zone 5  
1000-meter Universal Transverse Mercator grid ticks, zone 5, shown in blue  
Gray land lines represent unsurveyed and unmarked locations predetermined by the Bureau of Land Management.  
Folio S-12, Seward Meridian  
Swamps, as portrayed, indicate only the wetter areas, usually of low relief, as interpreted from aerial photographs



ROAD CLASSIFICATION  
No roads or trails in this area

FOR SALE BY U. S. GEOLOGICAL SURVEY  
FAIRBANKS, ALASKA 99701, DENVER, COLORADO 80225, OR RESTON, VIRGINIA 22092  
A FOLDER DESCRIBING TOPOGRAPHIC MAPS AND SYMBOLS IS AVAILABLE ON REQUEST

KENAI (C-7), ALASKA  
N6030 W15215/15X22.5  
1958  
MINOR REVISIONS 1972

