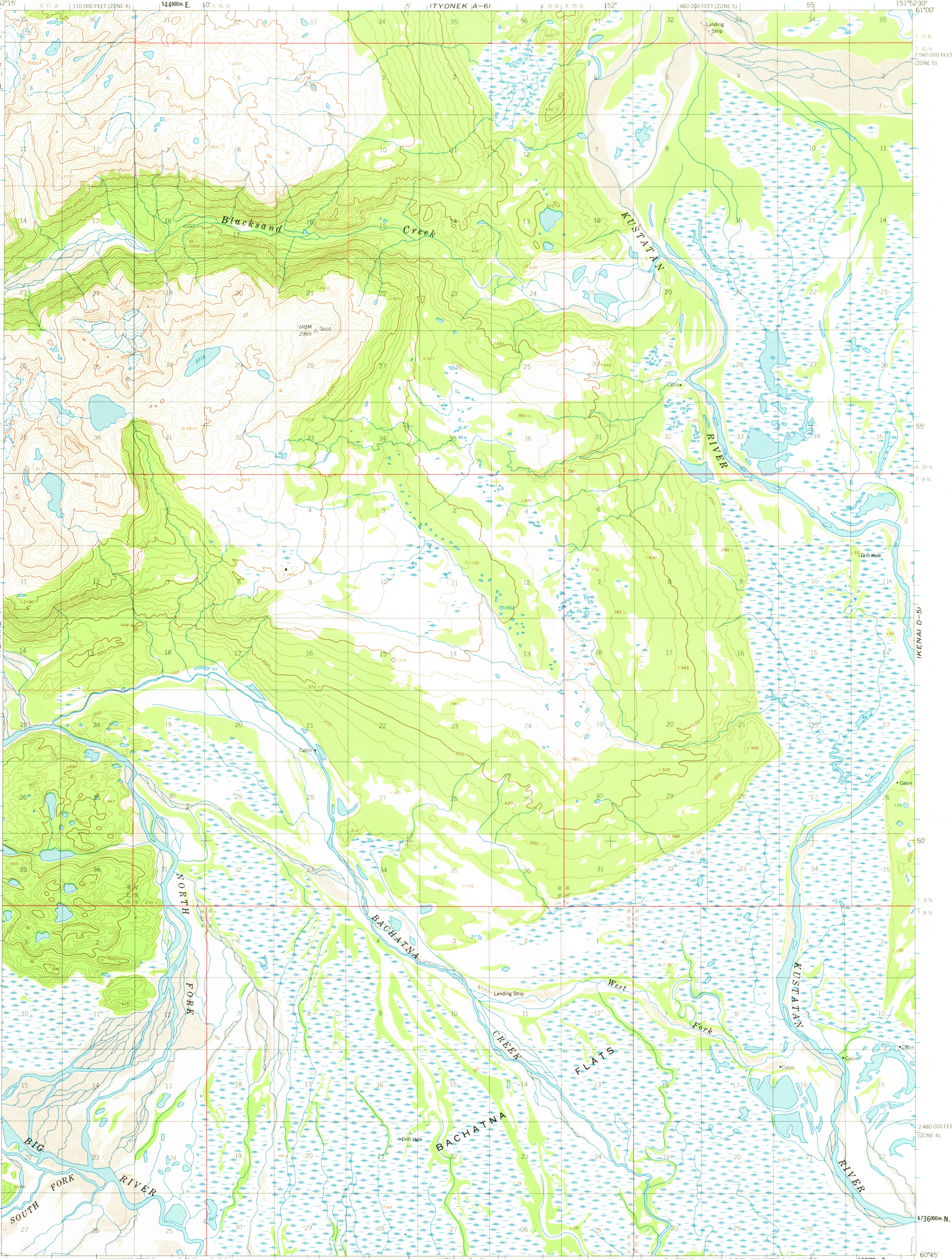
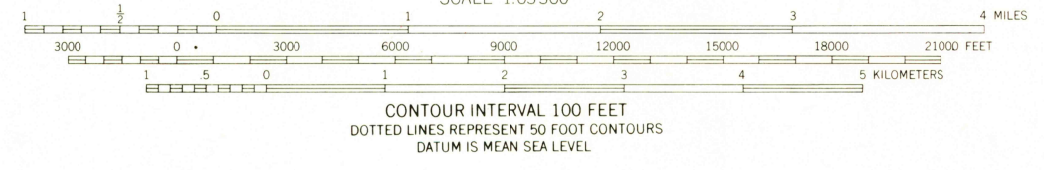
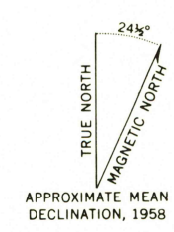


(TYONEK A-7)  
152°15' W  
61°00' N  
2 560 000 FEET (ZONE 4)  
6761000m N  
152°15' W  
110 000 FEET (ZONE 4)  
544000m E  
10' R 16 W  
5'  
(TYONEK A-6)  
152°  
860 000 FEET (ZONE 5)  
55'  
151°52'30" W  
61°00' N  
(KENAI D-7)  
152°15' W  
50'  
2 480 000 FEET (ZONE 5)  
6736000m N  
152°15' W  
820 000 FEET (ZONE 5)  
10' R 16 W  
5'  
(KENAI C-6)  
140 000 FEET (ZONE 4)  
152°  
560000m E  
151°52'30" W  
(KENAI C-5)



Mapped, edited, and published by the Geological Survey  
Control by USGS and USC&GS  
Topography by photogrammetric methods from aerial photographs taken 1952, 1954, and 1955; field annotated 1958  
Map not field checked  
Universal Transverse Mercator projection, 1927 North American datum  
10,000-foot grids based on Alaska coordinate system, zones 5 and 4  
1000-meter Universal Transverse Mercator grid ticks, zone 5, shown in blue  
Gray land lines represent unsurveyed and unmarked locations predetermined by the Bureau of Land Management  
Folios S.12 and S.13, Seward Meridian  
Swamps, as portrayed, indicate only the wetter areas, usually of low relief, as interpreted from aerial photographs



ROAD CLASSIFICATION  
No roads or trails in this area

FOR SALE BY U. S. GEOLOGICAL SURVEY  
FAIRBANKS, ALASKA 99701, DENVER, COLORADO 80225, OR WASHINGTON, D. C. 20242  
A FOLDER DESCRIBING TOPOGRAPHIC MAPS AND SYMBOLS IS AVAILABLE ON REQUEST

KENAI (D-6), ALASKA  
N6045-W15152.5/15X22.5  
1958  
MINOR REVISIONS 1973

MAR 1 1974

2740