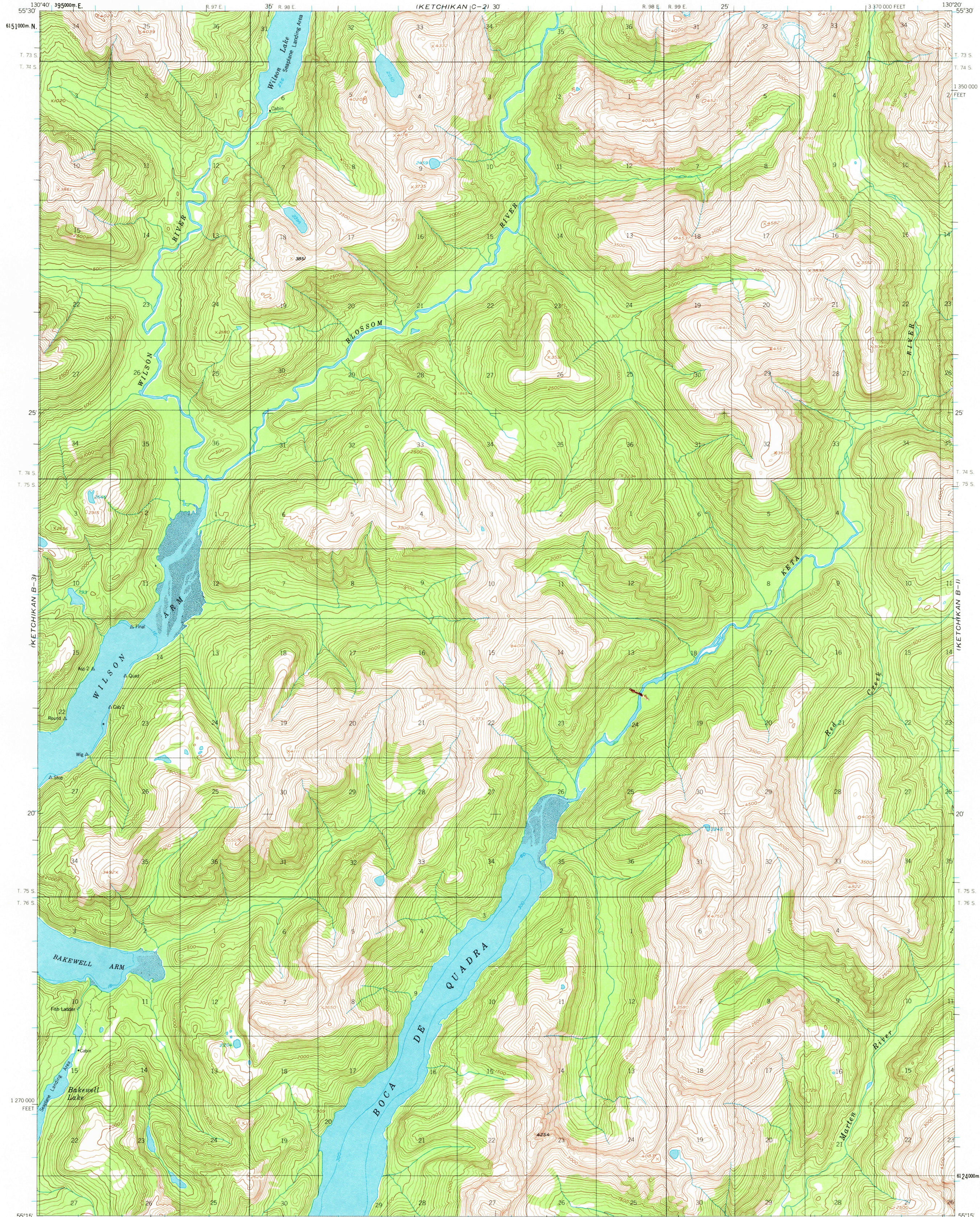


UNITED STATES
DEPARTMENT OF THE INTERIOR
GEOLOGICAL SURVEY

KETCHIKAN (B-2) QUADRANGLE
ALASKA
1:63 360 SERIES (TOPOGRAPHIC)



Mapped, edited, and published by the Geological Survey

Control by USGS and USC&GS

Topography by photogrammetric methods from aerial photographs taken 1948, field annotated 1955. Map not field checked

Selected hydrographic data compiled from USC&GS Charts 8053 (1942), 8075 (1956), 8078 (1943), and 8102 (1:229 376 scale) (1955)

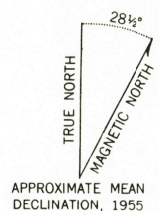
This information is not intended for navigational purposes

Universal Transverse Mercator projection, 1927 North American datum 10,000-foot grid based on Alaska coordinate system, zone 1 1000-meter Universal Transverse Mercator grid ticks, zone 9, shown in blue

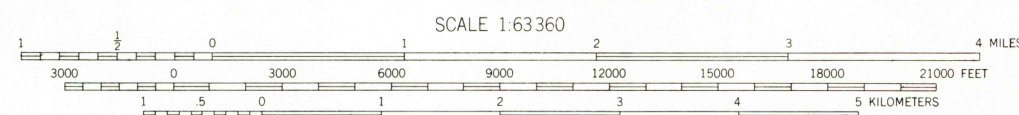
Land lines represent unsurveyed and unmarked locations predetermined by the State of Alaska, Division of Lands Copper River Meridian

Entire land area is within the Tongass National Forest and Misty Fjords National Monument

To place on the predicted North American Datum 1983 move the projection lines 35 meters north and 107 meters east



APPROXIMATE MEAN DECLINATION, 1955



SCALE 1:63 360
CONTOUR INTERVAL 100 FEET
NATIONAL GEODETIC VERTICAL DATUM OF 1929
DEPTH CURVES IN FEET-DATUM IS MEAN LOWER LOW WATER
SHORELINE SHOWN REPRESENTS THE APPROXIMATE LINE OF MEAN HIGH WATER
THE MEAN RANGE OF TIDE IS APPROXIMATELY 13 FEET

FOR SALE BY U. S. GEOLOGICAL SURVEY
FAIRBANKS, ALASKA 99701, DENVER, COLORADO 80225, OR RESTON, VIRGINIA 22092
A FOLDER DESCRIBING TOPOGRAPHIC MAPS AND SYMBOLS IS AVAILABLE ON REQUEST



KETCHIKAN (B-2), ALASKA
N5515-W13020/15X20

1955
MINOR REVISIONS 1981

RETURN TO:
NMD HISTORICAL MAP ARCHIVES
USGS NATIONAL CENTER, MS-522
RESTON, VA 22092

DEC 31 1981

1900