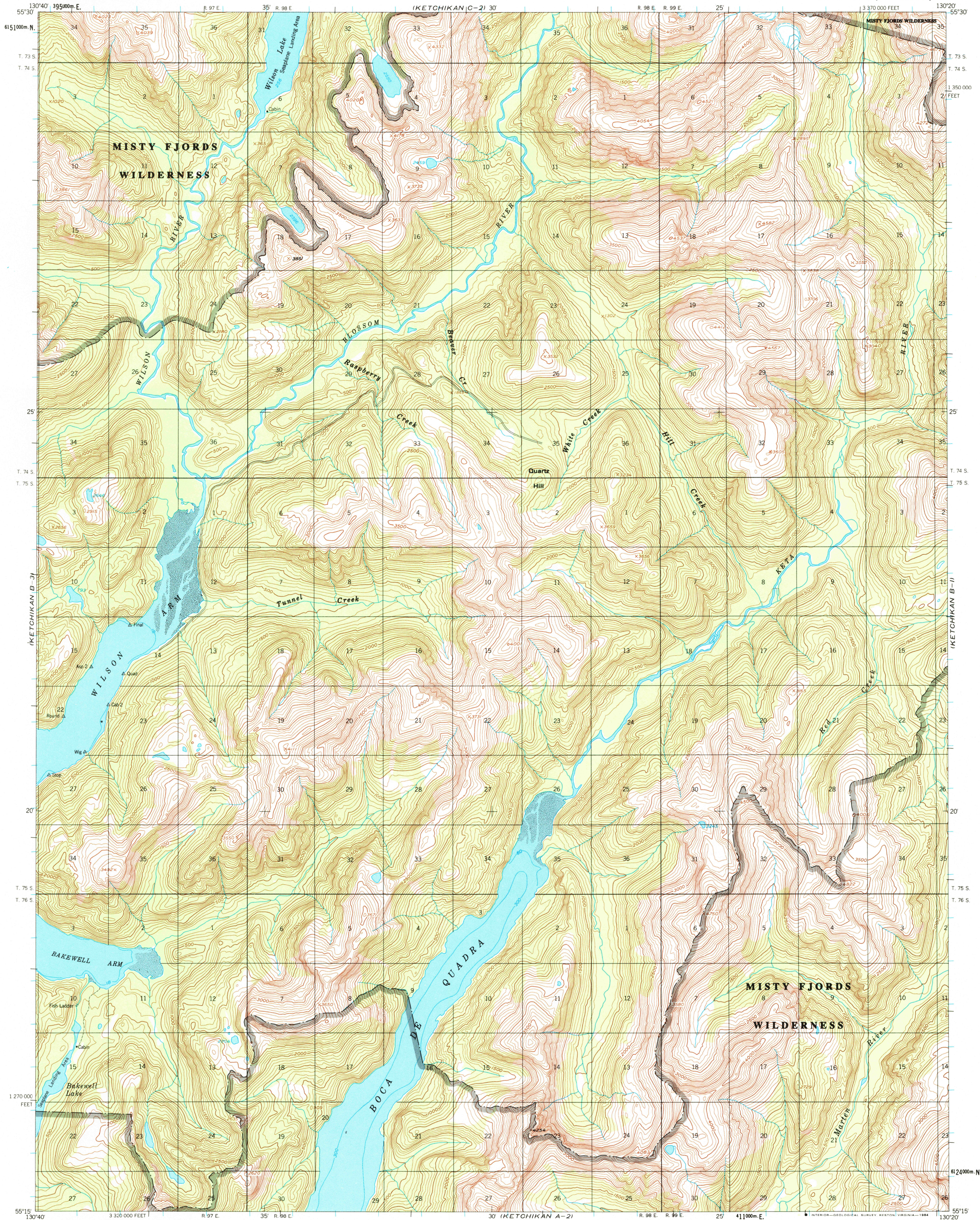


UNITED STATES
DEPARTMENT OF THE INTERIOR
GEOLOGICAL SURVEY

KETCHIKAN (B-2) QUADRANGLE
ALASKA
1:63 360 SERIES (TOPOGRAPHIC)



Mapped, edited, and published by the Geological Survey

Control by USGS and NOS/NOAA

Topography by photogrammetric methods from aerial photographs

taken 1948, field annotated 1955. Map not field checked

Selected hydrographic data compiled from NOS/NOAA charts 17427 (1979),

17424 (1983), 17434 (1981), and 17420 (1:229,376-scale) (1980)

This information is not intended for navigational purposes

Projection and 1000-meter grid ticks shown in blue:

Universal Transverse Mercator, zone 9

10,000-foot grid ticks based on Alaska coordinate

system, zone 1. 1927 North American Datum

To place on the predicted North American Datum 1983 move

the projection lines 35 meters north and 107 meters east

Land lines represent unsurveyed and unmarked locations

predetermined by the State of Alaska, Division of Lands,

Folio CR-16, Copper River Meridian

Federal reservation boundaries established by the Alaska National

Interest Lands Conservation Act, PL 96-487, Dec. 2, 1980 are

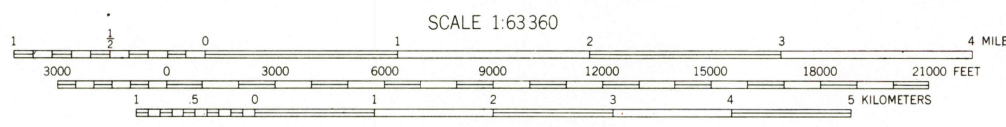
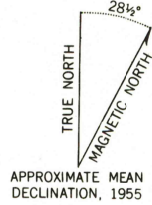
shown as compiled by the administering agencies

Entire land area is within the Tongass National Forest

and Misty Fjords National Monument

There may be private inholdings within the boundaries of

the National or State reservations shown on this map



CONTOUR INTERVAL 100 FEET
NATIONAL GEODETIC VERTICAL DATUM OF 1929
DEPTH CURVES IN FEET-DATUM IS MEAN LOWER LOW WATER
SHORELINE SHOWN REPRESENTS THE APPROXIMATE LINE OF MEAN HIGH WATER
THE MEAN RANGE OF TIDE IS APPROXIMATELY 13 FEET

FOR SALE BY U. S. GEOLOGICAL SURVEY
FAIRBANKS, ALASKA 99701, DENVER, COLORADO 80225, OR RESTON, VIRGINIA 22092
A FOLDER DESCRIBING TOPOGRAPHIC MAPS AND SYMBOLS IS AVAILABLE ON REQUEST



KETCHIKAN (B-2), ALASKA

N5515-W13020/15X20

1955

MINOR REVISIONS 1984

ROAD CLASSIFICATION
Light-duty

RETURN TO:
NMD HISTORICAL MAP ARCHIVES
USGS NATIONAL CENTER, MS-522
RESTON, VA 22092