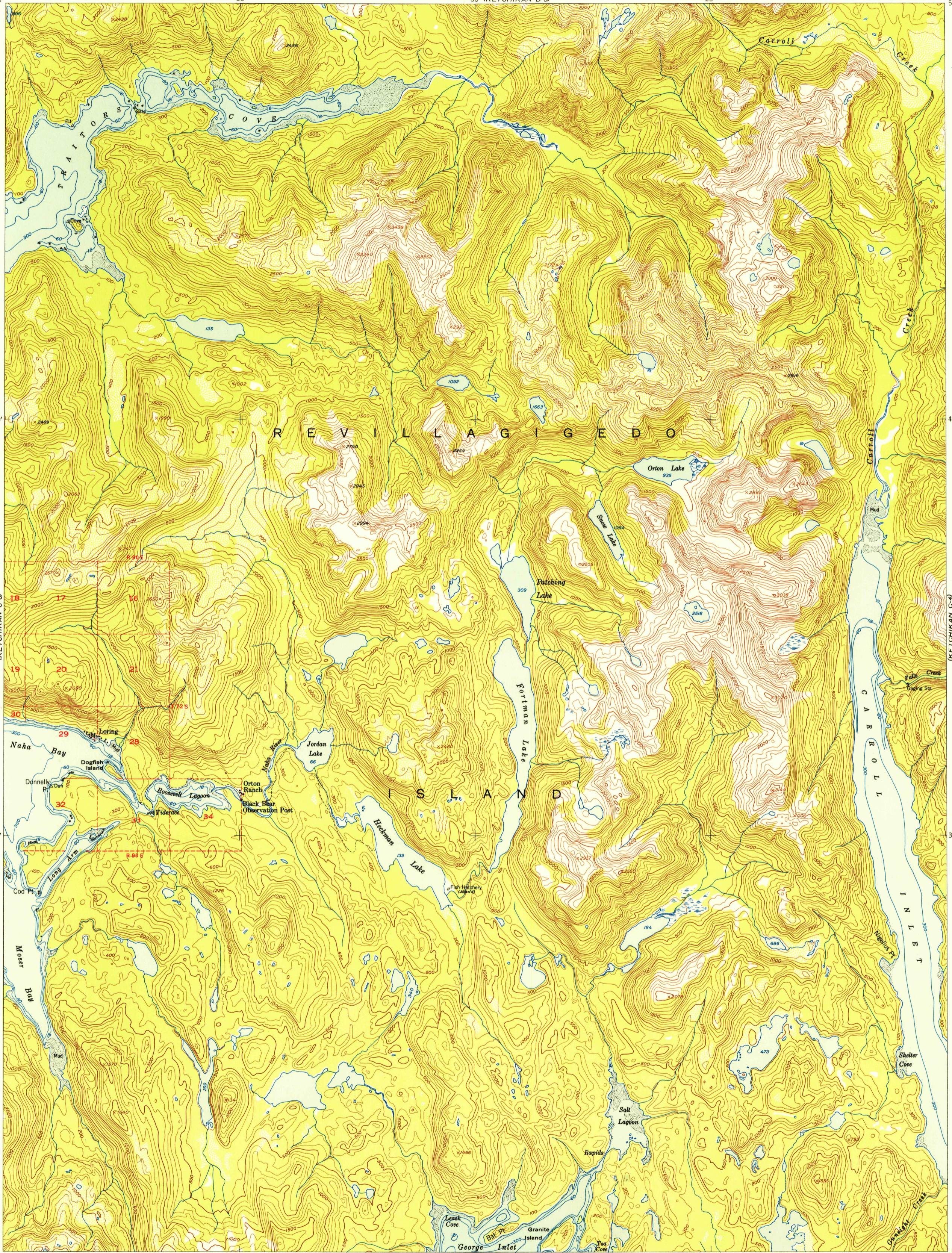


(KETCHIKAN D-6)

(KETCHIKAN D-4)

FILE COPY



(KETCHIKAN C-6)

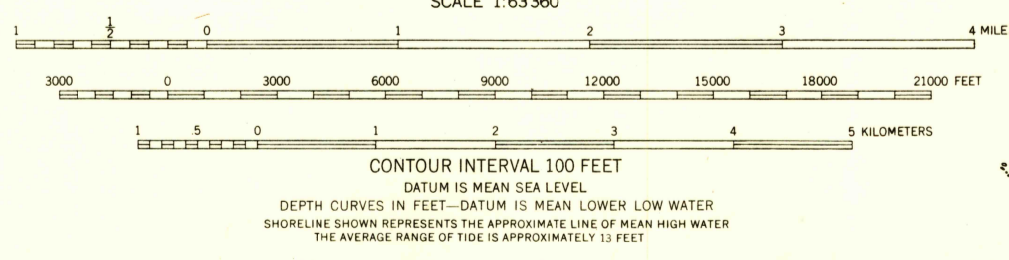
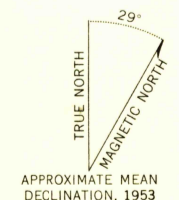
(KETCHIKAN C-4)

(KETCHIKAN B-6)

(KETCHIKAN B-4)

FILE COPY

Mapped, edited, and published by the Geological Survey
Control by USGS and USC&GS
Hydrography compiled from USC&GS charts 8079, 8102
(1:229,376 scale), 8124, H-2111, and T-2061
Topography from aerial photographs by multiplex methods 1953
Aerial photographs taken 1948
Universal Transverse Mercator projection, zone 9
1927 North American datum
Unchecked elevations are shown in brown and blue
Entire land area is within the Tongass National Forest



ROAD CLASSIFICATION

ALL WEATHER ROADS	DRY WEATHER ROADS	
Hard surface	None Improved dirt	None
Other	None Unimproved dirt	None
Trails		

KETCHIKAN (C-5) ALASKA
N5530-W13120/15X20

1953

FOR SALE BY U. S. GEOLOGICAL SURVEY, FEDERAL CENTER, DENVER, COLORADO OR WASHINGTON 25, D. C.
A FOLDER DESCRIBING TOPOGRAPHIC MAPS AND SYMBOLS IS AVAILABLE ON REQUEST

MAY 21 1954
2175