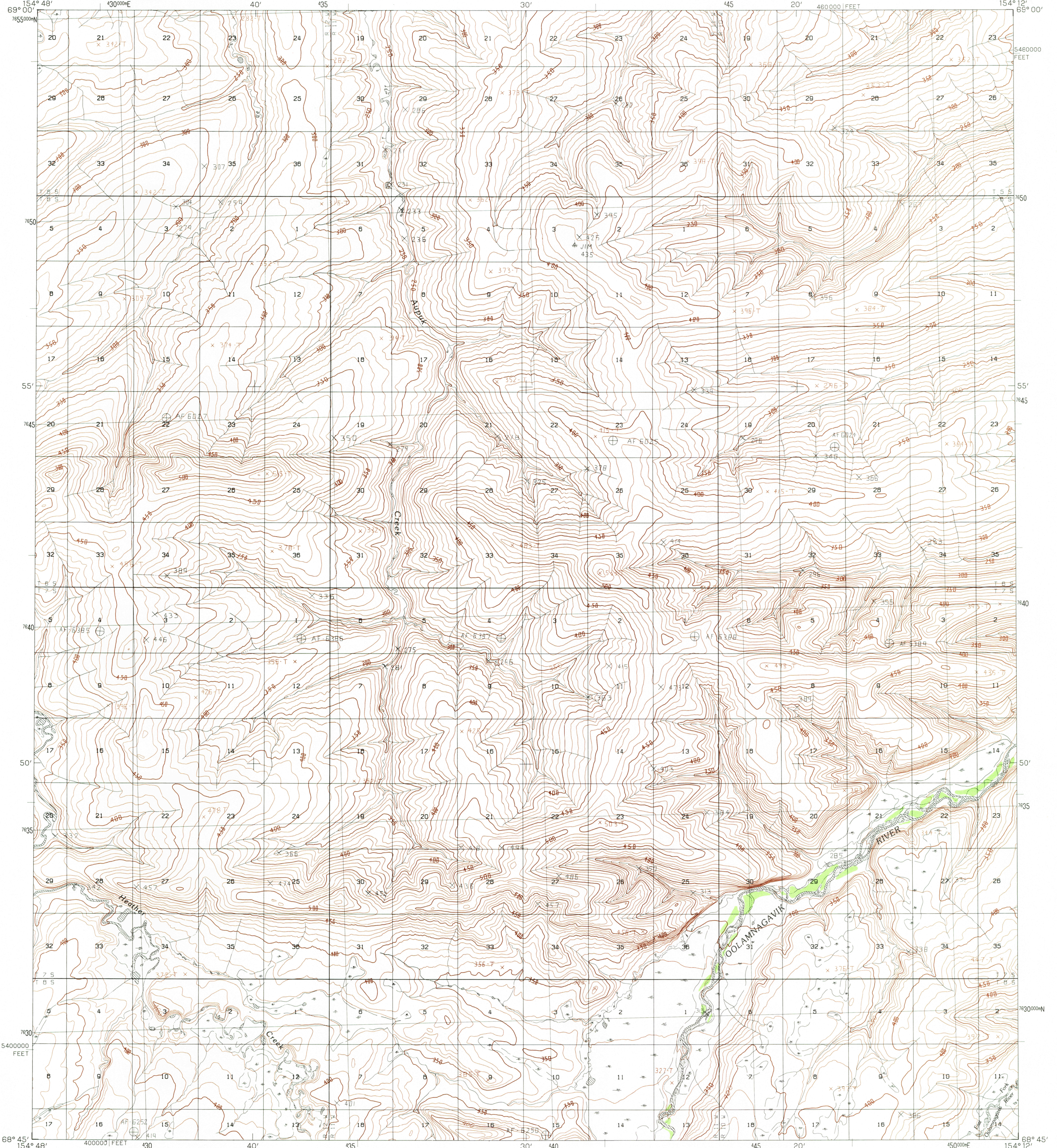


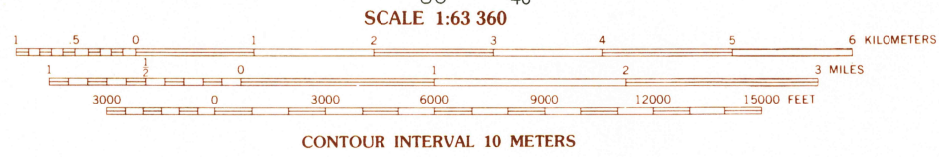
UNITED STATES
DEPARTMENT OF THE INTERIOR
GEOLOGICAL SURVEY

KILLIK RIVER (D-3) QUADRANGLE
ALASKA-NORTH SLOPE BOROUGH
1:63 360 SERIES (TOPOGRAPHIC)



PRODUCED BY THE UNITED STATES GEOLOGICAL SURVEY
CONTROL BY USGS, NOS/NOAA
COMPILED FROM AERIAL PHOTOGRAPHS TAKEN 1973
MAP NOT FIELD CHECKED. MAP EDITED 1986
PROJECTION UNIVERSAL TRANSVERSE MERCATOR
GRID: 5000-METER UNIVERSAL TRANSVERSE MERCATOR
20,000-FOOT STATE GRID TICKS ALASKA, ZONE 5
UTM GRID DECLINATION 1724 WEST
1986 MAGNETIC NORTH DECLINATION 2530 EAST
VERTICAL DATUM NATIONAL GEODETIC VERTICAL DATUM OF 1929
HORIZONTAL DATUM 1927 NORTH AMERICAN DATUM
To place on the predicted North American Datum of 1983, move the
projection lines 54 meters north and 122 meters east
Land lines represent unsurveyed and unmarked locations predeter-
mined by the Bureau of Land Management, Folio U-10, Uniat Meridian
There may be private inholdings within the boundaries of any Federal
or State Reservations shown on this map
All streams and lakes are perennial
Swamps, as portrayed, indicate only the wetter areas, usually of low
relief, as interpreted from aerial photographs

PROVISIONAL MAP
Produced from original
manuscript drawings. In-
formation shown as of date
of photography 3



CONTOURS AND ELEVATIONS IN METERS

ROAD LEGEND
No roads or trails in this area

USGS NHD HISTORICAL MAP
NOV 03 1985
REC'D FILE COPY

1	2	3	1 Ikpikuk (A-4)
2	4	5	2 Ikpikuk (A-3)
3	6	7	3 Ikpikuk (A-2)
4	8	8	4 Killik River (D-4)
5			5 Killik River (D-2)
6			6 Killik River (D-1)
7			7 Killik River (C-4)
8			8 Killik River (C-3)
			8 Killik River (C-2)

FOR SALE BY U.S. GEOLOGICAL SURVEY, FAIRBANKS, ALASKA 99701
DENVER, COLORADO 80225, OR RESTON, VIRGINIA 22092

KILLIK RIVER (D-3), ALASKA
PROVISIONAL EDITION 1986
68154-G2-TM-063