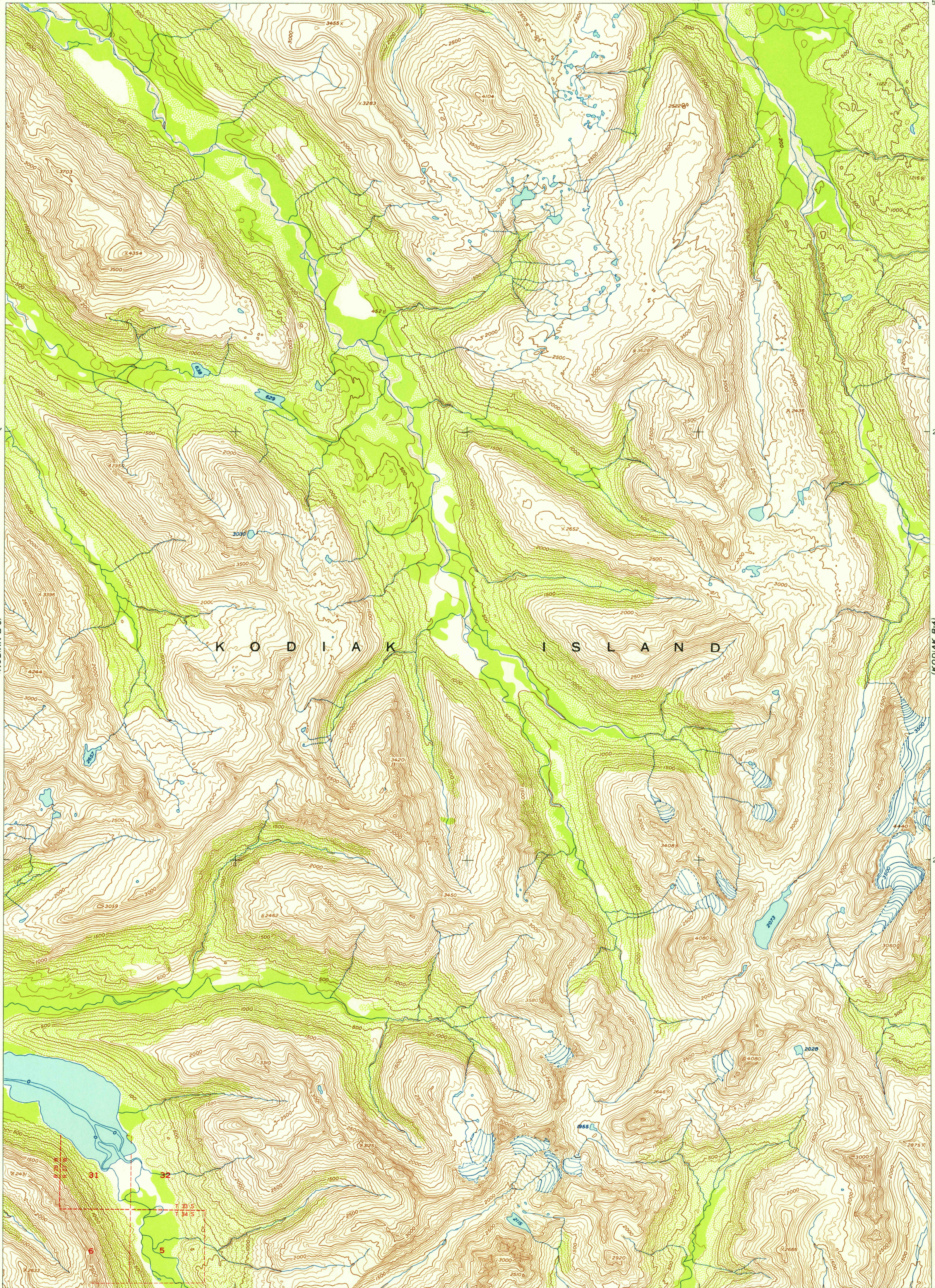


U.S.G.S.  
FILE COPY  
TOPOGRAPHIC DIVISION



57°15'  
153°40'

35'

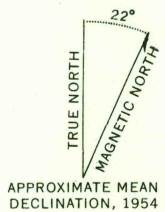
30' (KODIAK A-5)

25'

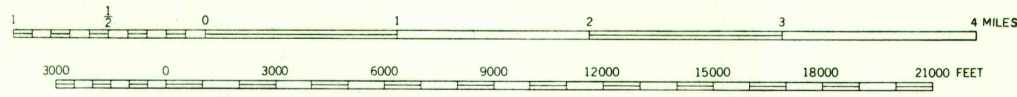
153°20'  
57°15'

(KODIAK A-4)

Mapped, edited, and published by the Geological Survey  
Control by USC&GS and USCE  
Hydrography compiled from USC&GS chart 8542  
Topography from aerial photographs by multiplex methods 1954  
Aerial photographs taken 1951 and 1952  
Universal Transverse Mercator projection, zone 5  
1927 North American datum  
Dashed land lines indicate approximate locations  
Entire land area is within the Kodiak National Wildlife Refuge  
Unchecked elevations are shown in brown and blue



APPROXIMATE MEAN  
DECLINATION, 1954



CONTOUR INTERVAL 100 FEET

DATUM IS MEAN SEA LEVEL

DEPTH CURVES IN FEET—DATUM IS MEAN LOWER LOW WATER  
SHORELINE SHOWN REPRESENTS THE APPROXIMATE LINE OF MEAN HIGH WATER  
THE AVERAGE RANGE OF TIDE IS APPROXIMATELY 12 FEET



QUADRANGLE LOCATION

ROAD CLASSIFICATION

ALL WEATHER ROADS	DRY WEATHER ROADS
Hard-surface.....None	Improved dirt.....None
Other.....None	Unimproved dirt.....None
Trails.....None	

KODIAK (B-5), ALASKA  
N5715-W15320/15X20

1954  
USGS  
Historical File  
Topographic Division

FOR SALE BY U.S. GEOLOGICAL SURVEY  
FEDERAL CENTER, DENVER, COLORADO WASHINGTON 25, D.C.  
A FOLDER DESCRIBING TOPOGRAPHIC MAPS AND SYMBOLS IS AVAILABLE ON REQUEST

U.S.G.S.  
FILE COPY  
TOPOGRAPHIC DIVISION

JAN 3 1956

2090