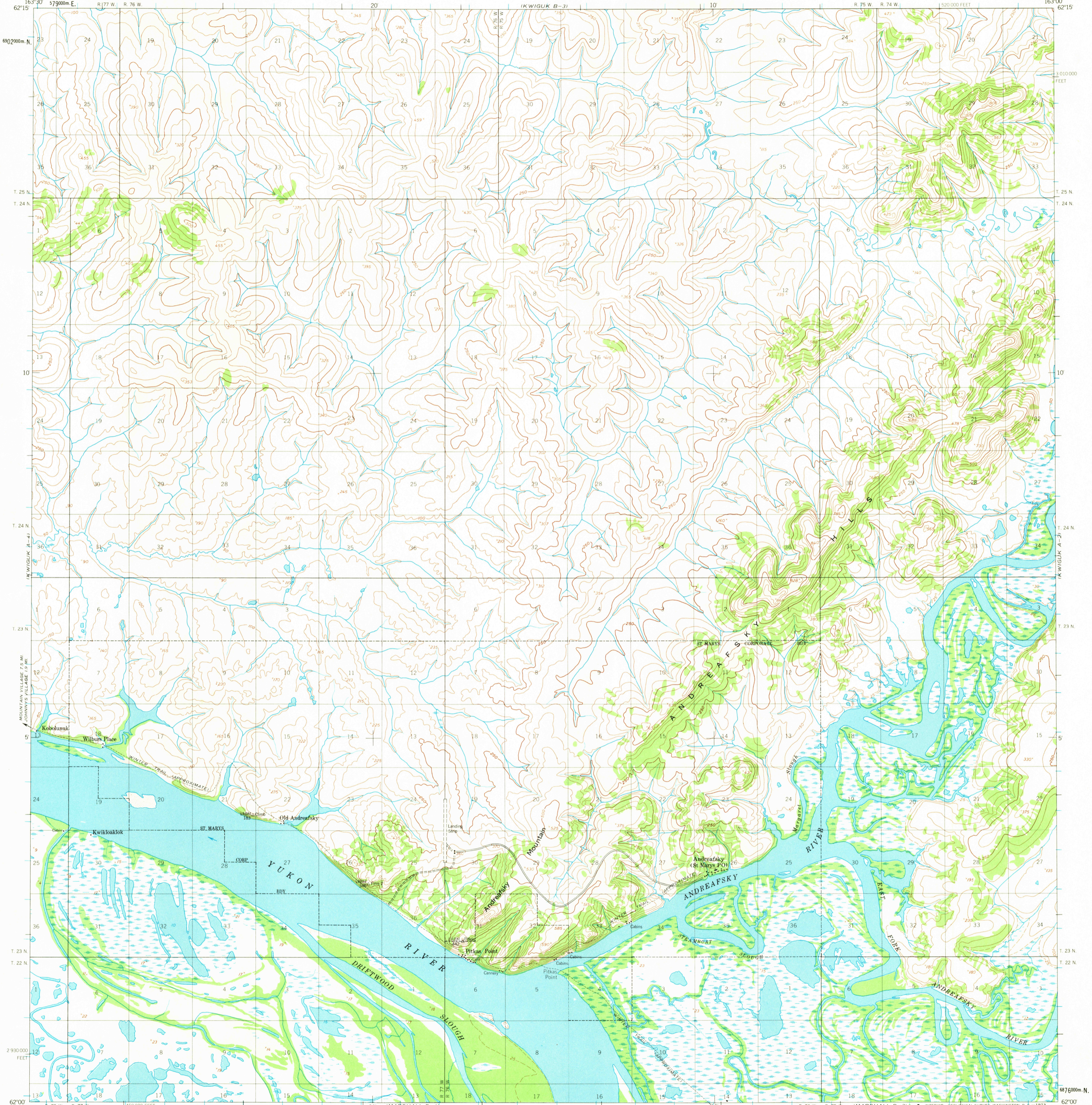


UNITED STATES
DEPARTMENT OF THE INTERIOR
GEOLOGICAL SURVEY

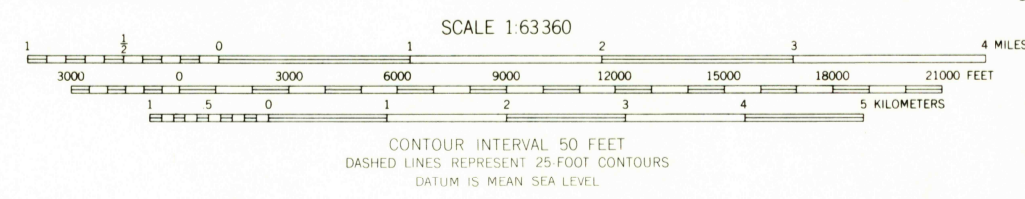
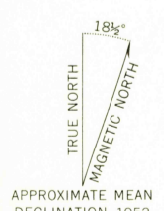
UNITED STATES
DEPARTMENT OF THE ARMY
CORPS OF ENGINEERS

KWIGUK (A-3) QUADRANGLE
ALASKA
1:63 360 SERIES (TOPOGRAPHIC)



Mapped by the Army Map Service
Published for civil use by the Geological Survey

Control by USCGS and USCE
Topography by photogrammetric methods from aerial photographs
taken 1951, field annotated 1952. Map not field checked
Universal Transverse Mercator projection, 1927 North American datum
10 000-foot grid based on Alaska coordinate system, zone 7
1000-meter Universal Transverse Mercator grid ticks,
zone 3, shown in blue
Land lines represent unsurveyed and unmarked locations
predetermined by the Bureau of Land Management
Folio S 6, Seward Meridian



ROAD CLASSIFICATION
Light-duty Unimproved dirt



FOR SALE BY U. S. GEOLOGICAL SURVEY
FAIRBANKS, ALASKA 99701, DENVER, COLORADO 80225, OR WASHINGTON, D. C. 20242
A FOLDER DESCRIBING TOPOGRAPHIC MAPS AND SYMBOLS IS AVAILABLE ON REQUEST

KWIGUK (A-3), ALASKA
N6200-W16300/15X30
1952
MINOR REVISIONS 1972

USGS
Historical File
Topographic Division

11 JUL 1976

2270