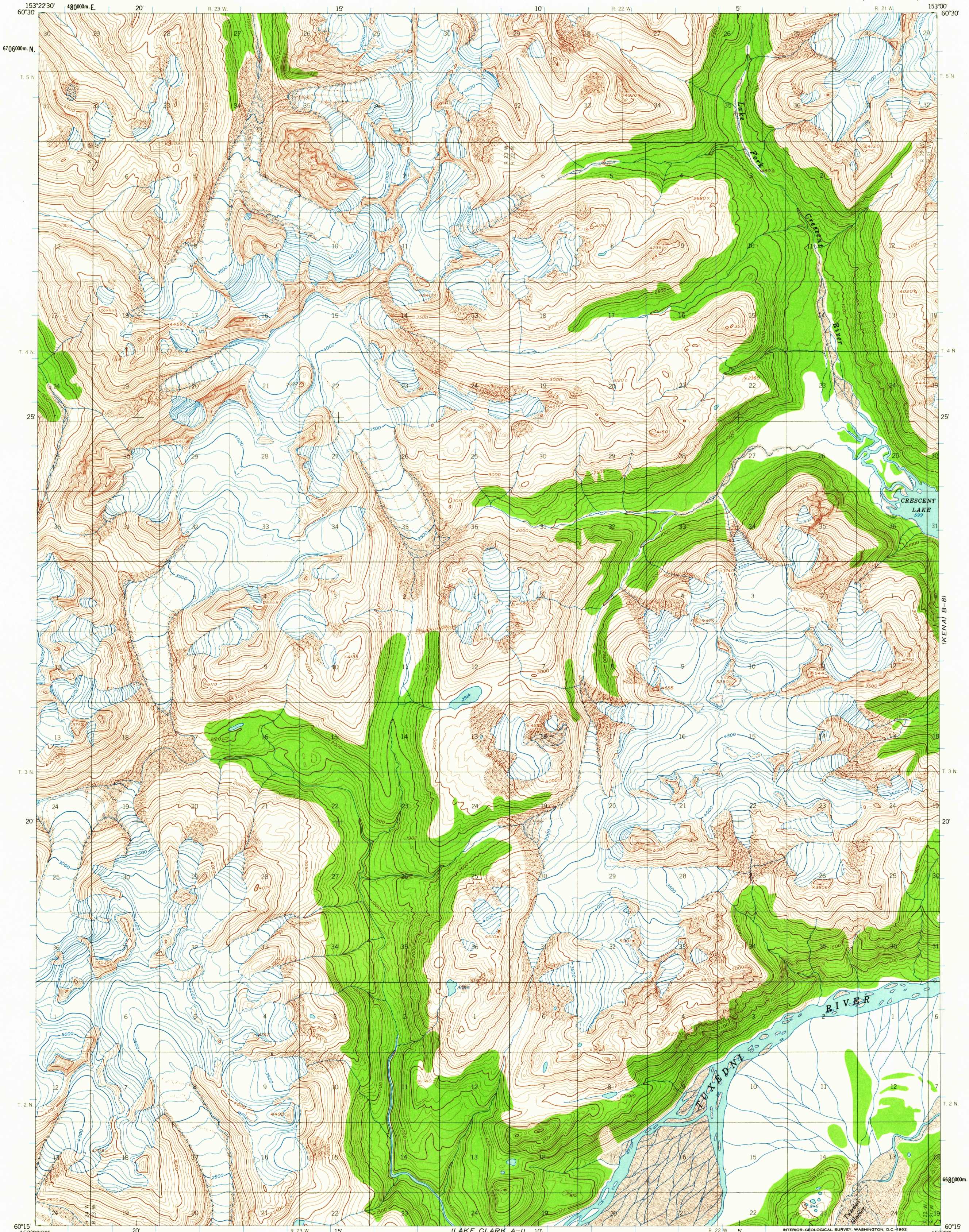


(LAKE CLARK C-2)

(KENAI C-8)



Mapped, edited, and published by the Geological Survey

Control by USGS

Topography from aerial photographs by photogrammetric methods 1960. Aerial photographs taken 1957, field annotated 1958. Map not field checked

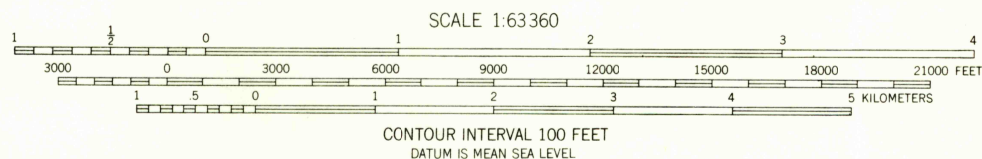
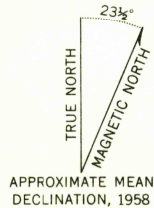
Universal Transverse Mercator projection

1927 North American datum

1000-meter Universal Transverse Mercator grid ticks, zone 5, shown in blue

Land lines represent unsurveyed and unmarked locations predetermined by the Bureau of Land Management

Folio S-12, Seward Meridian



USGS  
Historical File  
Topographic Division

ROAD CLASSIFICATION  
No roads or trails in this area



LAKE CLARK (B-1), ALASKA  
N6015-W15300/15X22.5

1958

FOR SALE BY U.S. GEOLOGICAL SURVEY  
FAIRBANKS, ALASKA DENVER 25, COLORADO WASHINGTON 25, D.C.  
A FOLDER DESCRIBING TOPOGRAPHIC MAPS AND SYMBOLS IS AVAILABLE ON REQUEST

JUN 15 1962

2610