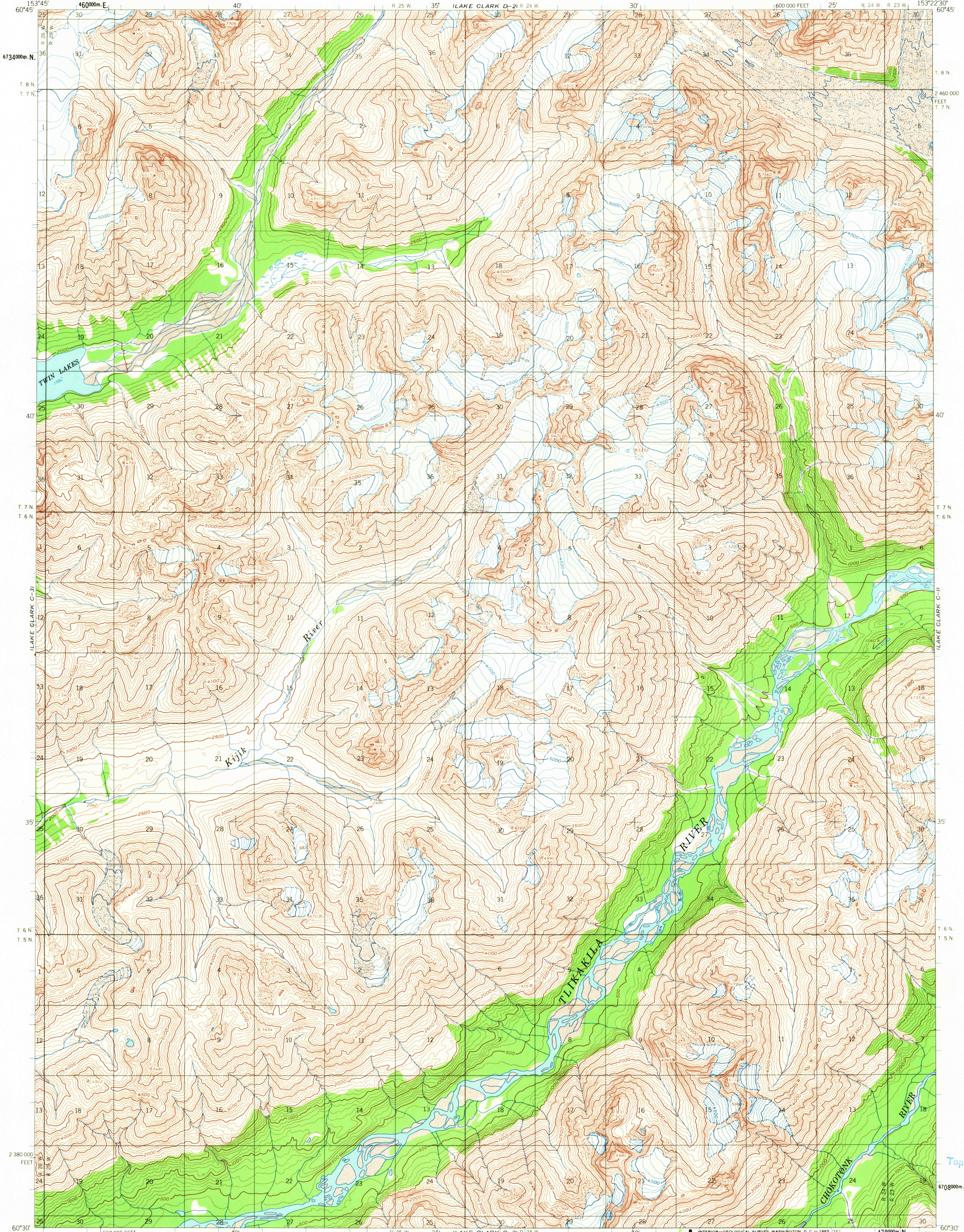


UNITED STATES
DEPARTMENT OF THE INTERIOR
GEOLOGICAL SURVEY

LAKE CLARK (C-2) QUADRANGLE
ALASKA
1:63 360 SERIES (TOPOGRAPHIC)



Mapped, edited, and published by the Geological Survey

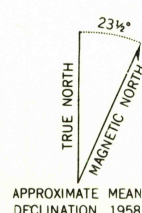
Control by USGS

Topography by photogrammetric methods from aerial photographs taken 1957, field annotated 1958. Map not field checked.

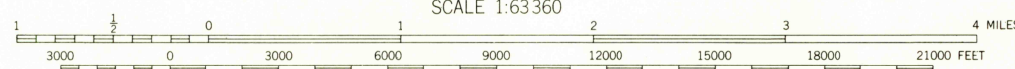
Universal Transverse Mercator projection, 1927 North American datum, 10,000 foot grid based on Alaska coordinate system, zone 5, 1000 meter Universal Transverse Mercator grid ticks, zone 5, shown in blue.

Land lines represent unsurveyed and unmarked locations predetermined by the Bureau of Land Management Folio S-12, Seward Meridian.

Swamps, as portrayed, indicate only the wetter areas, usually of low relief, as interpreted from aerial photographs.



APPROXIMATE MEAN DECLINATION, 1958



CONTOUR INTERVAL 100 FEET
DATUM IS MEAN SEA LEVEL

ROAD CLASSIFICATION
No roads or trails in this area



QUADRANGLE LOCATION

FOR SALE BY U.S. GEOLOGICAL SURVEY
FAIRBANKS, ALASKA 99701, DENVER, COLORADO 80225, OR WASHINGTON, D. C. 20242
A FOLDER DESCRIBING TOPOGRAPHIC MAPS AND SYMBOLS IS AVAILABLE ON REQUEST

LAKE CLARK (C-2), ALASKA
N6030-W15322 5/15X22.5

1958

USGS
Historical File
Topographic Division

AUG 24 1965

2240

U.S.G.S.

FILE COPY
TOPOGRAPHIC DIVISION