

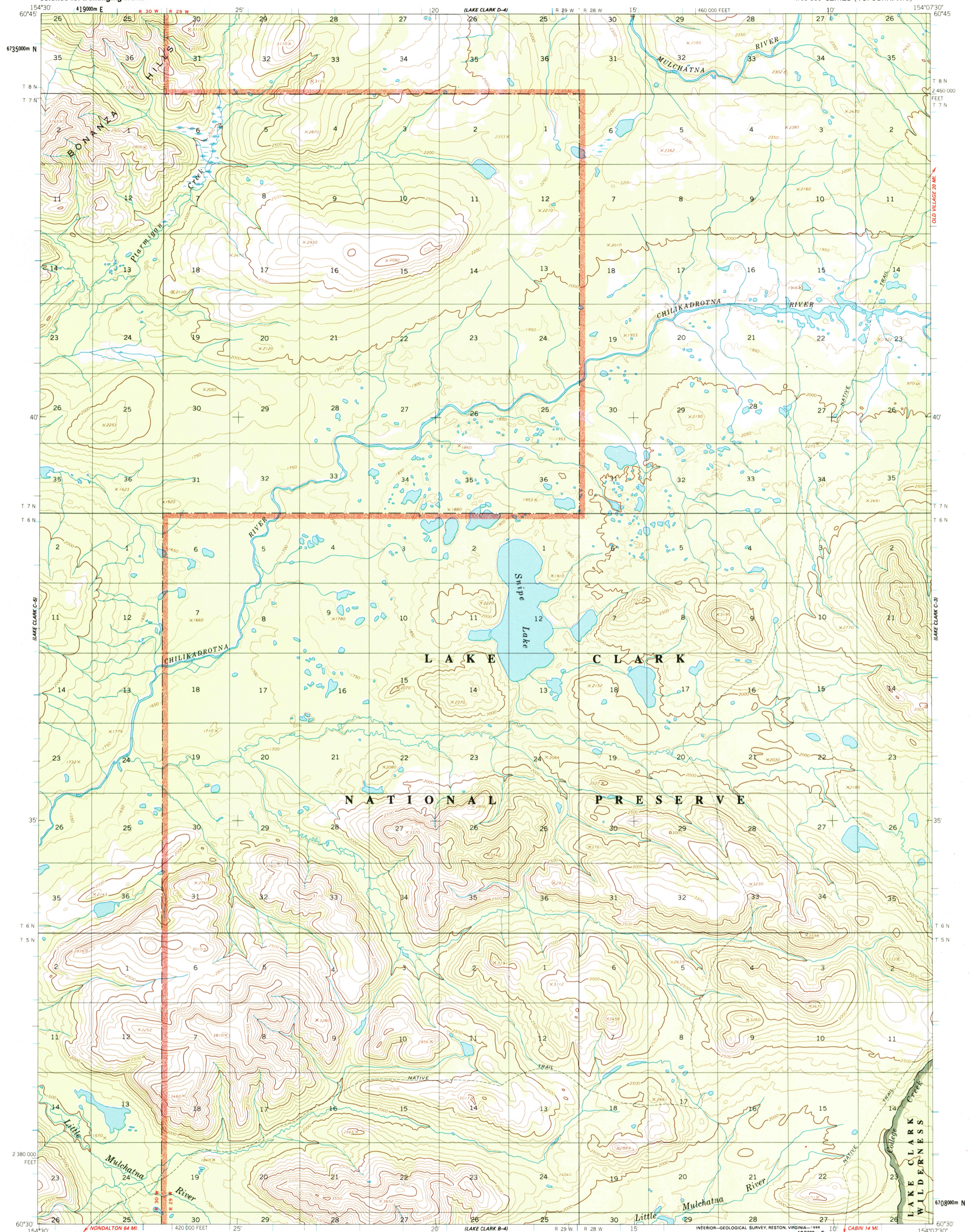
LAKE CLARK D-3



U.S. DEPARTMENT OF THE INTERIOR
U.S. GEOLOGICAL SURVEY

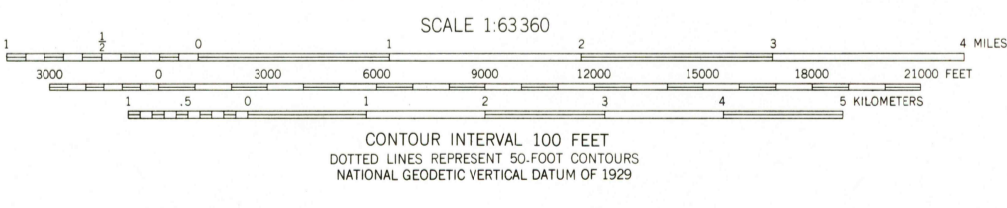
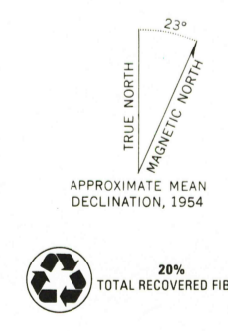
LAKE CLARK (C-4) QUADRANGLE
ALASKA
1:63 360 SERIES (TOPOGRAPHIC)

LAKE CLARK D-31



LAKE CLARK B-31

Mapped by the Defense Mapping Agency
 Edited and published by the Geological Survey
 Control by NOS/NOAA and USCE
 Topography by photogrammetric methods from aerial photographs
 taken 1957, field annotated 1953-54. Map not field checked
 Projection and 1000-meter grid ticks shown in blue:
 Universal Transverse Mercator, zone 5
 10,000-foot grid ticks based on Alaska coordinate
 system, zone 5. 1927 North American Datum
 To place on the predicted North American Datum 1983 move
 the projection lines 74 meters north and 126 meters east
 Gray land lines represent unsurveyed and unmarked locations
 predetermined by the Bureau of Land Management
 Folio S-12, Seward Meridian
 Swamps, as portrayed, indicate only the wetter areas,
 usually of low relief, as interpreted from aerial photographs
 Federal reservation boundaries established by The Alaska National
 Interest Lands Conservation Act, PL 96-487, Dec. 2, 1980, are
 shown as compiled by the administering agencies
 There may be private inholdings within the boundaries of
 the National or State reservations shown on this map



ROAD CLASSIFICATION
 Trails
 LAKE CLARK (C-4), ALASKA
 N6030-W15407.5/15X22.5
 1954
 MINOR REVISION 1985

FOR SALE BY U.S. GEOLOGICAL SURVEY,
 P.O. BOX 25286, DENVER, COLORADO 80225
 A FOLDER DESCRIBING TOPOGRAPHIC MAPS AND SYMBOLS IS AVAILABLE ON REQUEST

RECEIVED

FEB 3 1 2002

U.S. GEOLOGICAL SURVEY
HISTORICAL MAP ARCHIVES



ISBN 0-607-02461-5
9 780607 024616