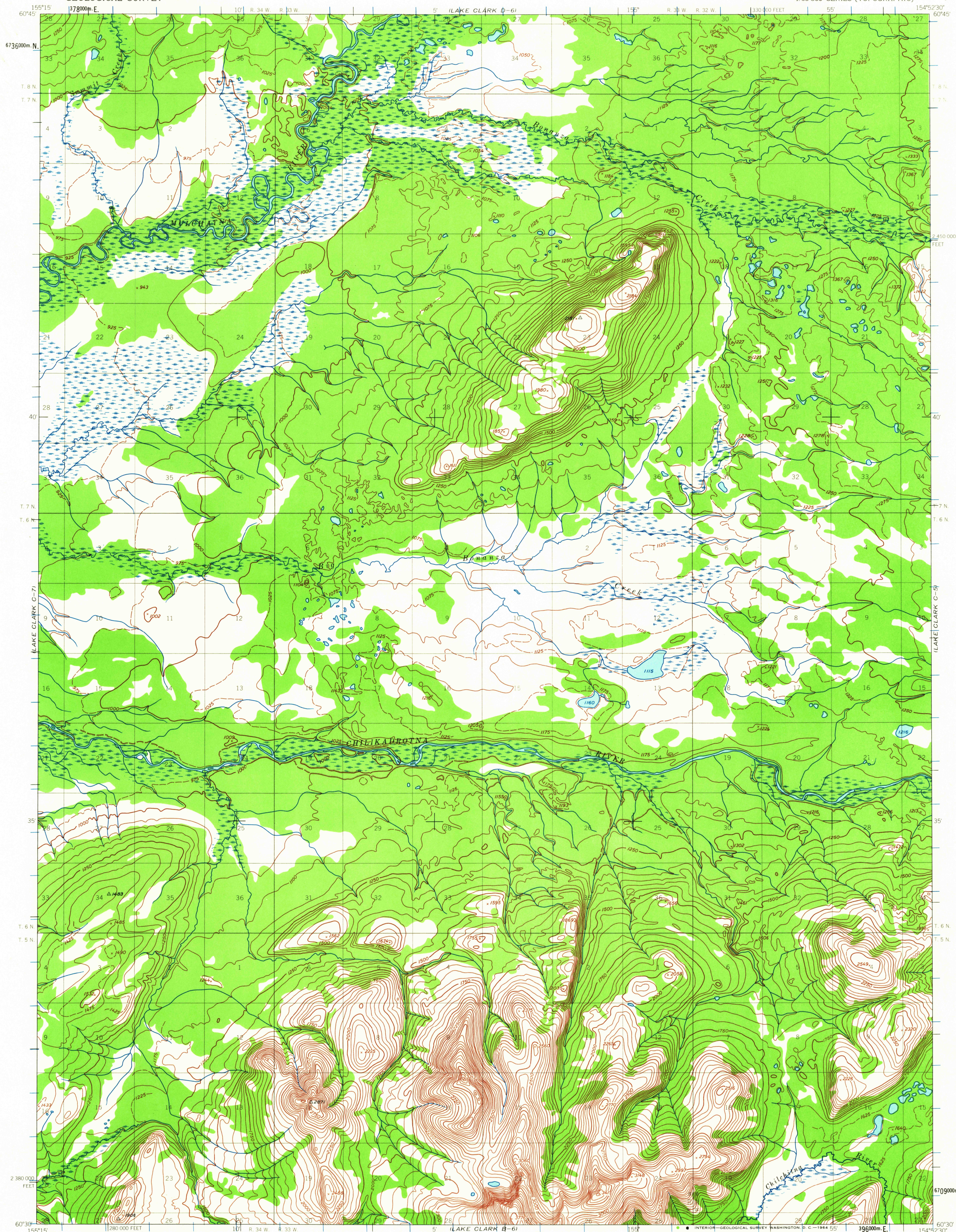


UNITED STATES
DEPARTMENT OF THE INTERIOR
GEOLOGICAL SURVEY

LAKE CLARK (C-6) QUADRANGLE
ALASKA
1:63 360 SERIES (TOPOGRAPHIC)



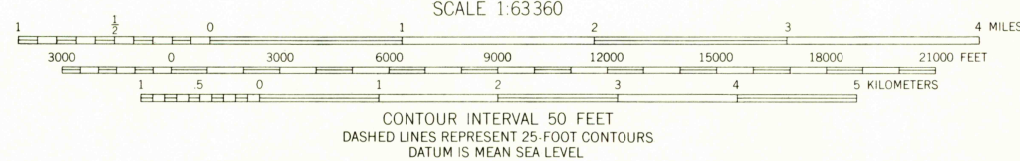
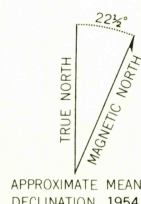
Mapped by the Army Map Service
Published for civil use by the Geological Survey

Control by USCGS and USCE

Topography by photogrammetric methods from aerial
photographs taken 1953, 1955 and 1957,
field annotated 1954. Map not field checked

Universal Transverse Mercator projection, 1927 North American datum
10,000-foot grid based on Alaska coordinate system, zone 5
1000-meter Universal Transverse Mercator grid ticks,
zone 5, shown in blue

Land lines represent unsurveyed and unmarked locations
predetermined by the Bureau of Land Management
Folios S 11 and S 12, Seward Meridian



FOR SALE BY U.S. GEOLOGICAL SURVEY
FAIRBANKS, ALASKA DENVER 25, COLORADO WASHINGTON 25, D.C.
A FOLDER DESCRIBING TOPOGRAPHIC MAPS AND SYMBOLS IS AVAILABLE ON REQUEST



LAKE CLARK (C-6), ALASKA
N6030-W15452 5/15X22.5

ROAD CLASSIFICATION
No roads or trails in this area

1954

USGS
Historical File
Topographic Division

NOV 4 1964

2230